

Reporting on ambient air quality assessment

Preliminary results for 2007



Addendum to ETC/ACC Technical Paper 2008/4 February 2009

Frank de Leeuw, Edward Vixseboxse



The European Topic Centre on Air and Climate Change (ETC/ACC)
is a consortium of European institutes under contract of the European Environmental Agency
PBL UBA-D UBA-V NILU AEAT AUTH CHMI MET.NO ÖKO TNO REC

Cover page: Frequently “heavily trafficked urban centre” and the “proximity to a major road” have been indicated as reason for individual exceedances of limit or target values of PM₁₀, NO₂ and ozone.

Cover photo © Oscar and Frank de Leeuw, 2008.

Author affiliation

Frank de Leeuw, Edward Vixseboxse, Netherlands Environmental Assessment Agency (PBL), Bilthoven, The Netherlands.

DISCLAIMER

<p>This ETC/ACC Technical Paper has not been subjected to European Environment Agency (EEA) member country review. It does not represent the formal views of the EEA.</p>

© ETC/ACC, 2009.
Addendum to ETC/ACC Technical Paper 2008/4.
European Topic Centre on Air and Climate Change
PO Box 303
3720 AH Bilthoven
The Netherlands
Phone +31 30 2743550
Fax +31 30 2744433
Email: etcacc@pbl.nl
Website <http://air-climate.eionet.europa.eu/>

1. Introduction

This addendum provides updated information presented earlier in a preliminary assessment (de Leeuw and Vixseboxse, 2008) of the annual reports by Member States to the European Commission on the results of the assessment of their air quality in 2007. These reports have been submitted under the Air Quality Framework Directive¹, following Commission Decision 2004/461/EC², which specifies the information to be sent in detail and provides a set of forms to be filled in. In the remaining of this report this Decision will be called ‘the questionnaire’ or, when the context is not directly clear, ‘the AQ questionnaire’.

This update has been prepared by the European Topic Centre on Air and Climate Change (ETC/ACC) of the European Environment Agency upon a request of DG Environment. A more extensive analysis of the 2007-questionnaire is foreseen to be available by November 2009. This final report will also discuss the reporting, on a voluntary basis, on the air quality related to the pollutants of the 4th Daughter Directive³. Assessments of the air quality in zones in the EU Member States based on the questionnaire for the years 2001-2006 are available from the web site of DG Environment⁴.

Member State reports addressed in this document

This document primarily deals with the reports by the EU Member States on the year 2007 submitted under the First Daughter Directive⁵, the Second Daughter Directive⁶ and the Third Daughter Directive⁷.

This addendum is based on the information received by ETC/ACC before 1 February 2009. Since the deadline of the preliminary report (10 November 2008), questionnaires have been received from the Netherlands and the remaining regions in Italy. Sweden and France have submitted revisions. Luxembourg is the only Member State which has not submitted any information. Voluntary submissions from Norway and Iceland have been received. This addendum should be read in conjunction with the preliminary report (de Leeuw and Vixseboxse, 2008).

Quality of the data received and implications for this overview

To facilitate the submission of the data, the Commission has made the AQ questionnaire available to the Member States in Excel format. This format does not reject erroneous data, and during the processing numerous small errors, e.g. spurious spaces, had to be removed before all reports could be joined in a database. A second form of trivial errors is the use of other symbols than prescribed in the questionnaire or its guidelines, for example, ticking an “x” or “+” in stead of the prescribed “y”; using a comma as separator while the semi-colon is prescribed. Although in general the information is unambiguous, a time consuming correction of this type of errors is necessarily for an automatic processing of the data.

There were also errors that required more insight for correction, such as inconsistent use of zone and pollutant codes or use of codes that were not allowed. Another difficult type of error is that MS do not use the same codes for stations in the AQ questionnaire and EoI reports. It is most likely that we made mistakes while making corrections or completing the missing information.

On 8 October 2008 the ETC/ACC has send out a mailing to the contact persons to acknowledge the receipt of the questionnaire. In this mailing a table which summarizes for each (sub)form the number

¹ Council Directive 96/62/EC on ambient air quality assessment and management.

² Commission Decision 2004/461/EC laying down an AQ questionnaire to be used for annual reporting on ambient air quality assessment under Council Directives 96/62/EC and 1999/30/EC and under Directives 2000/69/EC and 2002/3/EC of the European Parliament and of the Council.

³ Council Directive 2004/107/EC relating to arsenic, cadmium, mercury nickel and polycyclic hydrocarbons in ambient air.

⁴ <http://ec.europa.eu/environment/air/quality/legislation/reporting.htm>

⁵ Council Directive 1999/30/EC relating to limit values for sulphur dioxide, nitrogen dioxide and oxides of nitrogen, particulate matter and lead in ambient air (amended by Commission Decision 2001/744/EC).

⁶ Directive 2000/69/EC relating to limit values of benzene and carbon monoxide in ambient air.

⁷ Directive 2002/3/EC relating to ozone in ambient air.

of reported items (e.g., number of zones, number of stations, number of exceedances). MS were invited to check this table and to inform the ETC/ACC in case of misinterpretations from our side (in particular those related to the interpretation of incorrect pollutant codes used in Form 2). Some MS used this option and provided a revised questionnaire or form(s). Note that this feedback concerned the *quantity* not the *quality* or consistency of the information in the questionnaire. A content-oriented feedback is foreseen in the beginning of 2009; results of this feedback will be included in the final report.

Disclaimer

This report contains summary information based on data delivered before 1 February 2009. The information presented here is based on the submitted questionnaires only. Information submitted under the Exchange of Information is being processed and is therefore not yet available as additional input in the assessment. For processing the information, the ETC/ACC has, where needed, corrected or completed the information. As far as possible the Member States have been consulted in this process, however, due to time constraints this was not possible in all cases. Hence, this report should be regarded as preliminary and it cannot be used for legal compliance checking.

Abbreviations used	
<i>Member States have been abbreviated following the ISO3166-1 country alpha-2 code¹:</i>	
Austria: AT; Belgium: BE; Bulgaria: BG; Cyprus: CY; Czech Republic: CZ; Denmark: DK; Estonia: EE; Finland: FI; France: FR; Germany: DE; Greece: GR; Hungary: HU; Ireland: IE; Italy: IT; Latvia: LV; Lithuania: LT; Luxembourg: LU; Malta: MT; Netherlands: NL; Poland: PL; Portugal: PT; Slovakia: SK; Slovenia: SI; Spain: ES; Sweden: SE; United Kingdom: GB ² , and Iceland: IS and Norway: NO.	
AQ questionnaire	Questionnaire on air quality set out by Commission Decision 2004/461/EC
As	Arsenic
B(a)P	Benzo(a)pyrene
Cd	Cadmium
CO	Carbon monoxide
Eol	Exchange of Information Decision: Council Decision 97/101/EC, amended by Commission Decision 2001/752/EC
EU27	The 27 EU Member States after accession of 12 new Member States in 2004 and 2007
LAT	Lower assessment threshold
LTO	Long Term Objective (O ₃)
LV	Limit value
MOT	Margin of Tolerance
MS	Member State(s)
Ni	Nickel
NO ₂	Nitrogen dioxide
NO _x	Nitrogen oxides
O ₃	Ozone
PAH	Polycyclic Aromatic Hydrocarbons
Pb	Lead
PM ₁₀	Particulate matter composed of particles smaller than 10 micrometer in aerodynamic diameter
PM _{2.5}	Particulate matter composed of particles smaller than 2.5 micrometer in aerodynamic diameter
questionnaire	Questionnaire on air quality set out by Commission Decision 2004/461/EC
SO ₂	Sulphur dioxide
TV	Target value

Notes

1: see <http://www.iso.ch/iso/en/prods-services/iso3166ma/02iso-3166-code-lists/index.html>

2. Including Gibraltar.

2. Designation of zones

Table 1 gives an overview of the total number of zones defined for 2007 (Form 2).

Table 1. Number of zones per Member State in 2007, including the designation of the zones for individual pollutants or types of protection targets.

	Total (a)	SO ₂		NO ₂	NO _x	PM ₁₀	Pb	benzene	CO	O ₃
		health	ecosystem	health	vegetation					
AT	19	11	8	11	8	11	11	11	11	11
BE	18	12	0	11	0	11	13	5	7	6
BG	6	6	1	6	1	6	6	5	6	6
CY	1	1	1	1	1	1	1	1	1	1
CZ	15	15	15	15	15	15	15	15	15	15
DE	120	79	15	85	15	82	72	84	84	63
DK	3	3	3	3	1	3	3	1	3	3
EE	4	4	4	4	4	4	4	3	4	4
ES	138	138	36	138	37	138	138	138	138	138
FI	18	14	1	14	1	14	14	3	14	2
FR	81	81	75	81	75	80	45	53	57	77
GB	44	44	44	44	44	44	44	44	44	44
GR	4	4	4	4	4	4	0	1	4	4
HU	11	11	0	11	0	11	11	11	11	11
IE	4	4	1	4	1	4	4	4	4	4
IT	142	97	74	132	102	117	50	94	106	100
LT	3	3	1	3	0	3	3	3	3	3
LU ^b	na	na	na	na	na	na	na	na	na	na
LV	2	2	2	2	2	2	2	2	1	2
MT	2	2	1	2	1	2	1	2	1	2
NL	9	9	1	9	1	9	9	9	9	9
PL	186	170	125	170	125	170	170	170	170	28
PT	27	25	8	25	8	25	1	1	1	25
RO	21	21	1	20	1	21	21	19	20	4
SE	6	6	6	6	6	6	2	6	3	6
SI	9	9	9	8	8	6	6	6	6	6
SK	11	10	10	10	10	10	7	10	10	2
EU27	904	781	446	819	471	799	653	701	733	576
IS	3	1	1	1	0	2	1	1	1	2
NO	7	3	3	7	0	7	0	7	5	6

(a) Total refers here to the total number of designated zones in a Member States. As for each pollutant/protection target a different set of zones might be defined, the total equals or is larger than the number of zones per pollutant per protection target.

(b) No information available

Bn

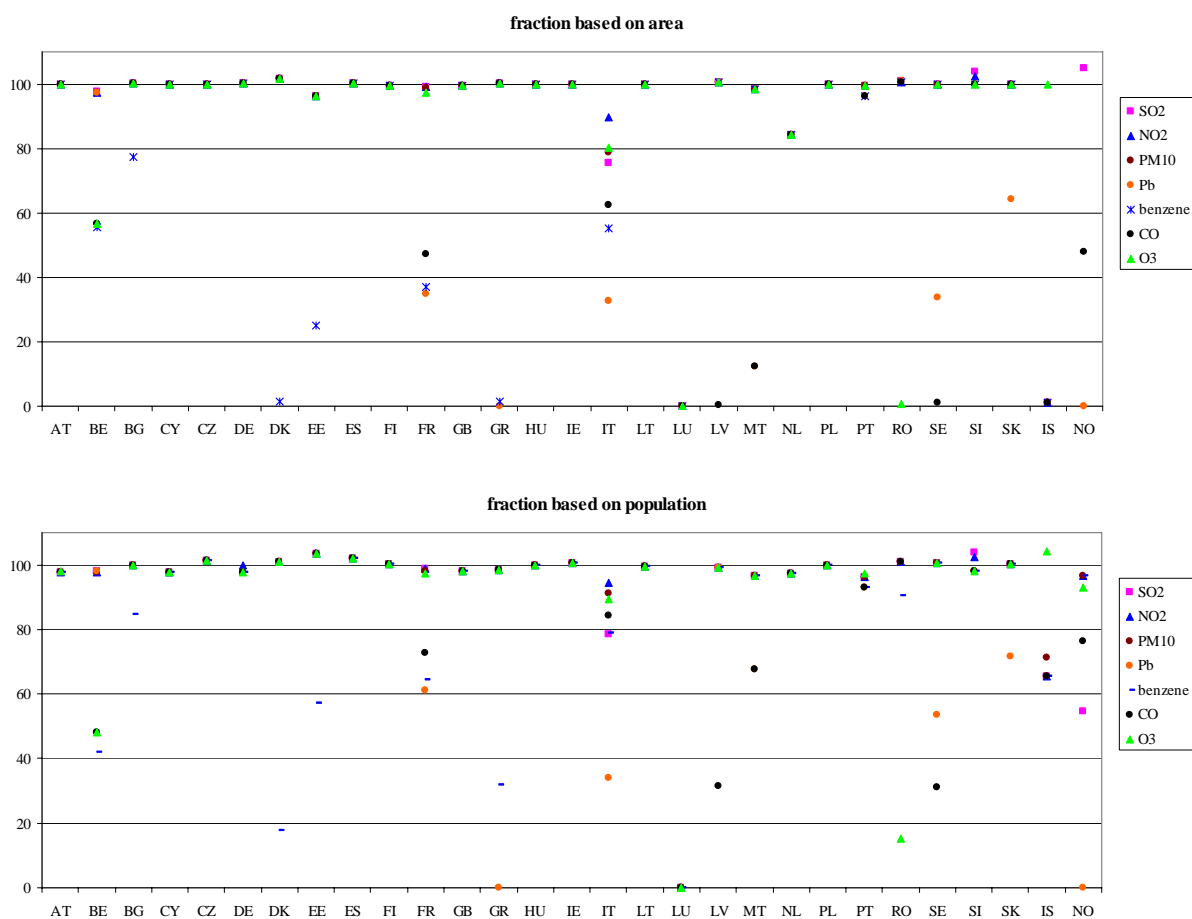


Figure 1. The total area (top) and population (bottom) of zones designated in relation to health protection as fraction of the national area and population. Note that no questionnaire is available for Luxembourg.

The limit values for the protection of human health apply throughout the whole territories of the Member States, so areas that do not belong to any zone related to health protection should not exist. Similar, the population living in zones related to health protections should add up to the national total population numbers. Figure 1 compares the totals of area and population calculated for each of the seven health related objectives with the corresponding national area and population. For most, but not all Member States the total surface area of the health-related zones indeed added up to the total surface area of the country within a range of 5%. Small deviations from the 100% are to be expected in view of the different information sources and by difference in base year of the census. National totals on area and population data provided by Eurostat or the FAO has been used here as a reference.

In 13 Member States (AT, CY, CZ, DE, ES, FI, GB, HU, IE, LT, PL, PT, SI) the population totals are nearly the same for the seven pollutants and are close to the 100% indicating that the total territory has been designated. This is confirmed in the upper part of Figure 1 showing the summed area of the zones in relation to the total territory. For some Member States the population varies slightly for the various pollutants. This indicates (minor) inconsistencies in the zone designation.

A nearly complete coverage is in general found for SO₂, NO₂, PM₁₀ and O₃ (except BE, IT and RO). Lower coverages are found in the case of lead, benzene and CO. Greece and Norway have not designated any zone for lead. In a second feedback cycle the ETC/ACC will ask the Member States to add the missing information.

3. Overview of zones where air quality thresholds were exceeded

If measurements or model calculations show that a limit value or limit value plus margin of tolerance is exceeded somewhere in the zone, the whole zone is designated as being in exceedance of this threshold. Table 2 summarises the exceedance status of zones per pollutant/protection target and per Member State.

There are some discrepancies between the number of zones listed in Table 2 (based on Forms 8 and 9) and the numbers presented in Table 1 (based on Form 2). In Table 3 the term *undefined* refers to zones which have been defined in Form 2 as being applicable for the given combination pollutant/protection target but the air quality status in the specified zone has not been given in the Forms 8 or 9. On the other hand, Table 3 includes information on the AQ status of pollutant/protection targets in zones which have not been designated for these pollutant/protection targets in Form 2. Further, in a number of cases the information in Form 2 and 8 is in contradiction: according to Form 2 a zone might be designated for protection of ecosystems or vegetation but in Form 8 it has been indicated that in this zone no areas exist where the ecosystem or vegetation limit values apply. In these cases the information presented in Form 8 has been taken as leading. To a large extent these discrepancies might result from mistakes (e.g. misprinting zone codes) in the respective forms. It is expected that the discrepancies will not influence the conclusions at the aggregated level presented here. However, it will be reflected in the detailed list of zones presented in Chapter 4.

Figure 2 shows for all limit/target values the percentage of zones in exceedance. The fraction is expressed taking the total number, the total population or the total area of the zones as reference. The graphs are arranged with the percentages in decreasing order, thus indicating the stringency of the limit/target values. The yellow bars correspond to the *undefined* zones, that is, zones designated for the pollutant/protection target combination but for which no information on the air quality has been given.

The PM₁₀ daily limit value and the ozone target values, both for health and vegetation, are the most frequently exceeded, both with respect to the number of zones as well as to population and area. The yearly limit value of NO₂ has the third highest score when looking to the fraction of potentially exposed population. In EU27, in 19 of the 35 zones where the hourly limit value for NO₂ has been exceeded, concentrations are above the limit value plus margin of tolerance; in case of the annual limit value of NO₂, 175 out of 229 zones have a concentration above limit value plus margin of tolerance. For all the indicators shown in Figure 2, exceedances of the health related target values of SO₂ (both hourly and daily), lead, CO, and benzene and of the ecosystem/vegetation related limit values for SO₂ (annual and winter mean) and NO_x are observed in less than 2% of the cases.

➤ *It should be noted that the number or percentage of zones in exceedance is only a crude indicator for the area in exceedance. In the first place, the exceedance area might be the entire zone area or just a few hundred square metres at a hotspot. In the second place, some Member States have made very large zones, so very few zones, for pollutants that are everywhere substantially below the air quality thresholds. Hence, the number or percentage of zones cannot be used to estimate the area in exceedance or to compare actual population exposure to air pollution between different Member States or even between regions within a Member State.*

Table 2a. Summary of exceedance status of zones in EU Member States in 2007 with respect to the limit values and limit values plus margin of tolerance for sulphur dioxide and nitrogen oxides.

MS	SO2 health 1h			SO2 health day			SO2 year			SO2 winter			NO2-h				NO2-y				NOx-y		
	und ef	<LV	>LV	und ef	<LV	>LV	und ef	<LV	>LV	und ef	<LV	>LV	und ef	<LV	LV - MO T	>M OT	und ef	<LV	LV - MO T	>M OT	und ef	<LV	>LV
AT	0	11	0	0	11	0	0	8	0	0	8	0	0	11	0	0	0	2	2	7	0	7	1
BE	0	12	0	0	12	0	0	0	0	0	0	0	0	11	0	0	0	7	3	1	0	0	0
BG	0	4	2	0	4	2	0	1	0	0	1	0	0	5	1	0	0	5	0	1	0	1	0
CY	0	1	0	0	1	0	0	1	0	0	1	0	0	1	0	0	0	1	0	0	0	1	0
CZ	0	15	0	0	14	1	0	15	0	0	14	1	0	14	0	1	0	8	5	2	0	0	15
DE	0	79	0	0	79	0	0	15	0	0	15	0	0	81	3	1	0	41	9	35	0	15	0
DK	0	3	0	0	3	0	0	3	0	0	3	0	0	3	0	0	0	2	0	1	0	3	0
EE	0	4	0	0	4	0	0	4	0	0	4	0	0	4	0	0	0	4	0	0	0	3	1
ES	5	129	4	5	130	3	5	31	0	6	30	0	7	122	5	4	7	112	10	9	5	32	0
FI	0	14	0	0	14	0	0	1	0	0	1	0	0	14	0	0	0	13	1	0	0	1	0
FR	7	72	3	7	72	3	23	42	0	24	41	0	5	73	1	3	5	60	5	12	32	32	1
GB	0	44	0	0	44	0	0	15	0	0	15	0	0	42	1	1	0	2	3	39	0	15	0
GR	0	4	0	0	4	0	2	2	0	2	2	0	0	3	0	1	0	1	0	3	2	2	0
HU	0	11	0	0	11	0	0	0	0	0	0	0	0	11	0	0	0	9	0	2	0	0	0
IE	0	4	0	0	4	0	0	1	0	0	1	0	0	4	0	0	0	4	0	0	0	0	1
IT	13	91	0	13	91	0	12	22	0	12	22	0	22	102	4	6	22	58	9	45	38	11	11
LT	0	3	0	0	3	0	0	1	0	0	1	0	0	3	0	0	0	3	0	0	0	0	0
LV	0	2	0	0	2	0	0	2	0	0	2	0	0	2	0	0	0	1	0	1	0	2	0
MT	0	2	0	0	2	0	0	1	0	0	1	0	0	2	0	0	0	1	0	1	0	1	0
NL	0	9	0	0	9	0	0	1	0	0	1	0	0	9	0	0	0	0	2	7	0	1	0
PL	0	170	0	0	169	1	0	125	0	0	125	0	0	169	0	1	0	164	2	4	0	125	0
PT	1	23	1	1	23	1	3	5	0	3	5	0	0	24	1	0	0	22	0	3	2	6	0
RO	17	4	0	17	4	0	0	1	0	0	1	0	16	3	0	1	16	2	1	1	0	1	0
SE	0	6	0	0	6	0	0	6	0	0	6	0	0	6	0	0	0	3	1	2	0	6	0
SI	0	9	0	0	9	0	0	9	0	0	9	0	2	6	0	0	2	6	0	0	2	4	2
SK	0	10	0	0	10	0	8	2	0	8	2	0	0	10	0	0	0	9	1	0	8	2	0
EU27	43	736	10	43	735	11	53	314	0	55	311	1	52	735	16	19	52	540	54	176	89	271	32
IS	0	1	0	0	1	0	0	1	0	0	1	0	0	1	0	0	0	1	0	0	0	0	0
NO	1	1	1	1	1	1	3	0	0	3	0	0	0	5	2	0	0	1	2	4	0	0	0

Table 2b. Summary of exceedance status of zones in EU Member States in 2007 with respect to the limit values and for particulate matter, lead, benzene and carbon monoxide and the target values and long-term objectives for ozone.

MS	PM10 health day			PM10 health year			lead			benzene				CO			Ozone health				Ozone vegetation			
	und ef	<LV	>LV	und ef	<LV	>LV	und ef	<LV	>LV	und ef	<LV	LV - MO T	>M OT	und ef	<LV	>LV	und ef	<LT O	LTO - TV	>TV	und ef	<LT O	LTO - TV	>TV
AT	0	4	7	0	11	0	0	11	0	0	11	0	0	0	11	0	0	0	11	3	0	0	8	
BE	0	0	11	0	9	2	0	12	1	0	7	0	0	0	7	0	0	0	5	1	0	0	5	1
BG	0	0	6	0	0	6	0	5	1	0	5	0	0	0	5	1	0	0	5	1	5	0	1	0
CY	0	0	1	0	0	1	0	1	0	0	1	0	0	0	1	0	0	0	0	1	0	0	0	1
CZ	0	4	11	0	12	3	0	15	0	0	14	0	1	0	15	0	0	0	0	15	0	0	0	15
DE	0	65	17	0	81	1	0	72	0	0	84	0	0	0	84	0	0	0	37	26	16	1	19	27
DK	0	1	2	0	3	0	0	3	0	0	3	0	0	0	3	0	0	1	2	0	0	1	2	0
EE	0	2	2	0	4	0	0	4	0	0	3	0	0	0	4	0	0	0	1	3	0	0	3	1
ES	8	75	55	8	98	32	44	94	0	55	83	0	0	27	111	0	12	18	57	51	14	29	42	53
FI	0	14	0	0	14	0	0	14	0	0	3	0	0	0	14	0	0	0	2	0	0	2	0	0
FR	4	50	26	4	69	7	5	48	0	3	57	0	0	4	61	0	4	4	31	40	10	21	14	33
GB	0	37	7	0	42	2	0	44	0	0	44	0	0	0	44	0	0	2	42	0	0	40	4	0
GR	0	0	4	0	0	4	0	4	0	0	3	1	0	0	4	0	0	0	2	2	0	0	0	4
HU	0	6	5	1	7	3	0	11	0	0	11	0	0	0	11	0	0	0	4	7	11	0	0	0
IE	0	4	0	0	4	0	0	4	0	0	4	0	0	0	4	0	0	3	1	0	3	1	0	0
IT	19	38	61	19	75	24	20	37	0	18	82	3	0	14	99	1	17	3	17	63	52	1	2	45
LT	0	1	2	0	3	0	0	3	0	0	3	0	0	0	3	0	0	0	3	0	0	0	1	0
LV	0	0	2	0	1	1	0	2	0	0	2	0	0	0	1	0	0	2	0	0	1	1	0	0
MT	0	1	1	0	1	1	0	1	0	0	2	0	0	0	1	0	0	1	0	1	0	0	0	1
NL	0	0	9	0	7	2	5	4	0	0	9	0	0	0	9	0	0	0	7	2	0	1	6	0
PL	0	110	60	0	151	19	0	170	0	0	167	2	1	0	170	0	0	1	16	11	0	0	10	6
PT	0	17	8	0	22	3	0	1	0	0	1	0	0	0	1	0	1	2	12	10	19	0	4	2
RO	17	0	4	17	0	4	17	4	0	16	3	0	0	16	3	1	0	0	0	4	0	0	0	1
SE	0	4	2	0	5	1	0	6	0	0	6	0	0	0	6	0	0	3	3	0	0	5	1	0
SI	0	1	5	0	3	3	0	6	0	0	6	0	0	0	6	0	0	0	1	5	0	0	1	5
SK	0	4	6	0	7	3	0	10	0	0	10	0	0	0	10	0	0	0	0	2	0	0	0	2
EU27	48	438	314	49	629	122	91	586	2	92	624	6	2	61	688	3	34	40	248	256	134	103	115	205
IS	0	1	1	0	2	0	1	0	0	0	1	0	0	0	1	0	0	2	0	0	0	2	0	0
NO	0	4	3	0	6	1	0	0	0	2	5	0	0	4	1	0	1	0	0	5	6	0	0	0

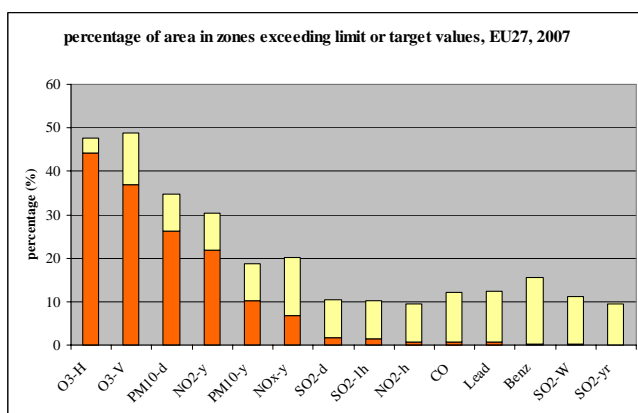
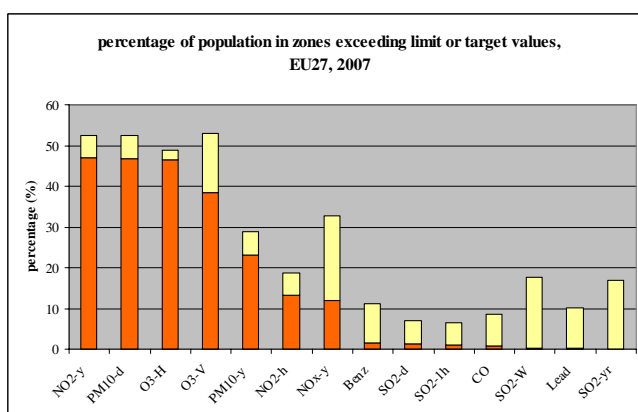
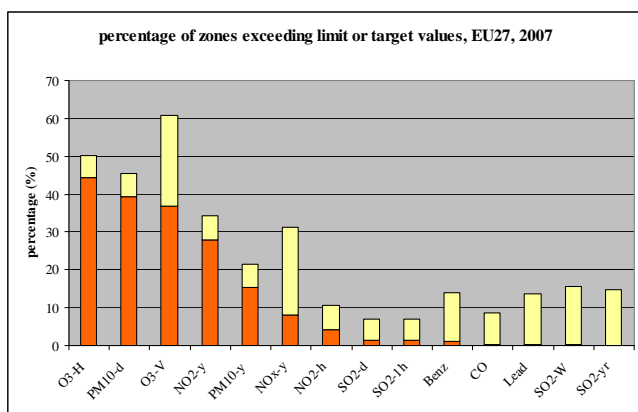


Figure 2. Overview of zones exceeding air quality thresholds. Top: percentage of zone; middle, percentage of population in zones; bottom, percentage of area in zones. In each graph the percentage are arranged in decreasing order. The yellow bars correspond to zones with an undefined air quality status

4. List of zones in EU Member States in relation to air quality thresholds

laid down in Council Directives 96/62/EC, 1999/30/EC, 2000/69/EC and 2002/3/EC

preliminary results 2007

**Addendum to ETC/ACC Technical paper 2008/4
February 2009**



E. Vixseboxse, F.A.A.M de Leeuw

This chapter lists how the air quality in 2007 in zones in Member States related to air quality thresholds laid down in the EU air quality directives. The list is based on the information submitted by the Member States to the European Commission before 1 February 2009. Resubmissions or further communication by Member states after this date are not included in the list and in the aggregated tables.

Legislative background

Council Directive 96/62/EC (the Air Quality Framework Directive) requires Member States to divide their territory in zones (Article 2) and to assess the air quality in these zones. Under Article 11.1(b) Member States must annually submit lists of zones in which the levels of one or more pollutants are respectively:

- higher than the limit value plus the margin of tolerance,
- between the limit value and the limit value plus the margin of tolerance,
- below the limit value.

In the case of ozone, Member States should submit lists of zones in which the level of ozone are:

- higher than the target value
- between the target value and the long term objective value
- below the long term objective

Council Decision 2004/461/EC specifies the questionnaire that Member States have to use for submitting this and other information on the air quality.

Council Directive 1999/30/EC (the First Daughter Directive) sets limit values and margins of tolerance for the substances sulphur dioxide (SO₂), nitrogen dioxide (NO₂), oxides of nitrogen (NO_x), particulate matter (PM₁₀) and lead. Council Directive 2000/69/EC (the Second Daughter Directive) sets such thresholds for benzene and carbon monoxide (CO). The third Daughter Directive (2002/3/EC), deals with ground-level ozone, was adopted early in 2002 and sets target values and long term objective values. Under these three directives, air quality data on 2006 had to be reported by the EU27 Member States. Italy and Romania did not cover their total National area in reporting, zones were missing. Norway and Iceland voluntarily submitted the questionnaire but this information is not included in this summary of EU Member States.

Article 11.2(a) of the Framework Directive requires the European Commission to publish annually a list of the agglomeration and non-agglomeration zones in relation to air quality thresholds.

Legend to the list

The list shows the exceedance status for all zones in the EU27 Member States. This list is preceded by two summary tables, which give the total number of zones per exceedance status per Member State.

The list gives for each zone the zone name, the agglomeration status (ag: agglomeration; nonag: not an agglomeration), the area of the zone in km² and the population (number of inhabitants). Where this information has not been submitted, the cell has been left empty.

The air quality status of a zone is indicated as follows:

- Concerning SO₂; NO₂; NO_x; PM₁₀; Lead; Benzene and CO:

↓lv

Concentrations are everywhere below (or equal to) the *limit value*. This indication refers to all limit values (irrespective of whether they had to be met in 2007).

↑lv

Concentrations are at one or more locations above the *limit value* that had to be met in 2007.

lv-mot

Concentrations are at one or more locations between the *limit value* and the *limit value plus the margin of tolerance*, but everywhere below *the limit value plus the margin of tolerance*. This limit value did not yet have to be met in 2007.

↑mot

Concentrations are at one or more locations above the *limit value plus the margin of tolerance*. This indicator refers to limit values that did not yet have to be met in 2007. A plan or programme had to be prepared or implemented and sent to the Commission to ensure that this limit value will be attained in time.

- Concerning ozone

↓lto

Concentrations are everywhere below (or equal to) the *long term objective value*.

lto-tv

Concentrations are at one or more locations between the *long term objective value* and the *target value*, but everywhere below the *long term objective value plus the target value*.

↑tv

Concentrations are at one or more locations above the *target value* that had to be met in 2006.

In addition to this, there are two more indications in the list:

-

A dash indicates that the zone had not been designated for this pollutant or this type of limit value.

An empty cell indicates that the information is missing.

The names of the 27 EU Member States have been abbreviated as follows:

AT: Austria; BE: Belgium; BG: Bulgaria; CY: Cyprus; CZ: Czech Republic; DE: Germany; DK: Denmark; EE: Estonia; EL: Greece; ES: Spain; FI: Finland; FR: France; HU: Hungary; IE: Ireland; IT: Italy; LT: Lithuania; LU: Luxembourg; LV: Latvia; MT: Malta; NL: Netherlands; PL: Poland; PT: Portugal; RO: Romania; SE: Sweden; SI: Slovenia; SK: Slovakia; UK: United Kingdom. Additional reporting countries are: IS: Iceland and NO: Norway.

The list refers to the following limit values:

Abbreviation in the list	Limit value			Had the limit value to be met in 2006?	Had the limit value a margin of tolerance?
	Pollutant	Protection target	Averaging time		
SO ₂ health Hr	Sulphur dioxide	Health	Hour	Yes	No
SO ₂ health Day	Sulphur dioxide	Health	Day	Yes	No
SO ₂ eco Yr	Sulphur dioxide	Ecosystems	Year	Yes	No
SO ₂ eco Wntr	Sulphur dioxide	Ecosystems	Winter	Yes	No
NO ₂ Hr	Nitrogen dioxide	Health	Hour	No (2010)	Yes
NO ₂ Yr	Nitrogen dioxide	Health	Year	No (2010)	Yes
NO _x Yr	Nitrogen dioxide	Vegetation	Year	Yes	No
PM ₁₀ Day	Particulate Matter	Health	Day	Yes	No
PM ₁₀ Yr	Particulate Matter	Health	Year	Yes	No
Lead Yr	Lead	Health	Year	Yes	No
Lead Yr ¹	Lead	Health	Year	No (2010)	Yes
Benzene Yr	Benzene	Health	Year	No (2010)	Yes
CO 8hr	Carbon monoxide	Health	8 hours	Yes	No
O ₃ Day	Ozone	Health	Day	-	-
O ₃ 3month	Ozone	Vegetation	3 Month	-	-

¹⁾ Only valid for specific point sources (SS = Specific Sources), of which the Commission must be notified (according to annex IV of the first Daughter Directive); in these cases the intermediate limit value of 1.0 µg/m³ must be met by 01/01/2010.

Caveat

Not all information has been submitted to the Commission in the correct format. For some zones, interpretation of the data was needed and hence it cannot be excluded that the compliance status is incorrectly indicated. For some zones, the corresponding information on exceedances could not be identified in the report to the Commission, possibly due to a mismatch of zone codes submitted in different forms of the questionnaire.

Reporting of errors or observations

To report errors, inconsistencies or suggestions for improvement, please inform the authors (frank.deleeuw@pbl.nl) and the Commission (airinfo@ec.europa.eu).

CC	zone name	zone code	type	area	pop	SO2-1h	SO2-d	SO2-yr	SO2-W	NO2-h	NO2-y	NOx-y	PM10-d	PM10-y	Lead	Benz	CO	O3-H	O3-V
AT	Burgenland	AT_01	nonag	3962	279000	<lv	<lv	<lv	<lv	<lv	<lv	<lv	<lv	<lv	<lv	<lv	<lv	-	-
AT	Kärnten	AT_02	nonag	9538	561000	<lv	<lv	<lv	<lv	<lv	lv-mot	<lv	>lv	<lv	<lv	<lv	<lv	-	-
AT	Niederösterreich	AT_03	nonag	19185	1550000	<lv	<lv	<lv	<lv	<lv	lv-mot	<lv	>lv	<lv	<lv	<lv	<lv	-	-
AT	Oberösterreich ohne AG Linz	AT_04	nonag	11717	1113000	<lv	<lv	<lv	<lv	<lv	>mot	<lv	<lv	<lv	<lv	<lv	<lv	-	-
AT	Salzburg	AT_05	nonag	7156	521000	<lv	<lv	<lv	<lv	<lv	>mot	<lv	<lv	<lv	<lv	<lv	<lv	-	-
AT	Steiermark ohne AG Graz	AT_06	nonag	16203	931000	<lv	<lv	<lv	<lv	<lv	<lv	<lv	>lv	<lv	<lv	<lv	<lv	-	-
AT	Tirol	AT_07	nonag	12641	675000	<lv	<lv	<lv	<lv	<lv	>mot	>lv	>lv	<lv	<lv	<lv	<lv	-	-
AT	Vorarlberg	AT_08	nonag	2600	352000	<lv	<lv	<lv	<lv	<lv	>mot	<lv	<lv	<lv	<lv	<lv	<lv	-	-
AT	Wien	AT_09	ag	415	1563000	<lv	<lv	-	-	<lv	>mot	-	>lv	<lv	<lv	<lv	<lv	>tv	
AT	AG Linz	AT_40	ag	264	269000	<lv	<lv	-	-	<lv	>mot	-	>lv	<lv	<lv	<lv	<lv	>tv	
AT	AG Graz	AT_60	ag	198	255000	<lv	<lv	-	-	<lv	>mot	-	>lv	<lv	<lv	<lv	<lv	>tv	
AT	Nordostösterreich ohne AG Wien	AT_O3_1	nonag	21677	1754244	-	-	-	-	-	-	-	-	-	-	-	-	>tv	>tv
AT	Südostösterreich ohne AG Graz	AT_O3_2	nonag	10573	837146	-	-	-	-	-	-	-	-	-	-	-	-	>tv	>tv
AT	Oberösterreich und nördliches Salzburg ohne AG Linz	AT_O3_3	nonag	13456	1442452	-	-	-	-	-	-	-	-	-	-	-	-	>tv	>tv
AT	Pinzgau, Pongau und Steiermark nördlich des Alpenhauptkamms	AT_O3_4	nonag	8442	257825	-	-	-	-	-	-	-	-	-	-	-	-	>tv	>tv
AT	Nordtirol	AT_O3_5	nonag	10623	625552	-	-	-	-	-	-	-	-	-	-	-	-	>tv	>tv
AT	Vorarlberg	AT_O3_6	nonag	2600	352000	-	-	-	-	-	-	-	-	-	-	-	-	>tv	>tv
AT	Kärnten und Osttirol	AT_O3_7	nonag	11557	609808	-	-	-	-	-	-	-	-	-	-	-	-	>tv	>tv
AT	Lungau und oberes Murtal	AT_O3_8	nonag	4079	130634	-	-	-	-	-	-	-	-	-	-	-	-	>tv	>tv
BE	BRUSSELS	BEB10A	ag	161	950000	<lv	<lv	-	-	<lv	>mot	-	>lv	<lv	<lv	<lv	<lv	lto-tv	lto-tv
BE	PORT OF ANTWERP	BEF01S	nonag	252	50000	<lv	<lv	-	-	<lv	lv-mot	-	>lv	<lv	<lv	-	-	-	-
BE	ANTWERP	BEF02A	ag	170	530000	<lv	<lv	-	-	<lv	lv-mot	-	>lv	<lv	<lv	<lv	<lv	lto-tv	lto-tv
BE	PORT OF GHENT	BEF03S	nonag	117	45000	<lv	<lv	-	-	<lv	<lv	-	>lv	<lv	<lv	-	-	-	-
BE	GHENT	BEF04A	ag	136	250000	<lv	<lv	-	-	<lv	<lv	-	>lv	<lv	<lv	<lv	<lv	lto-tv	lto-tv
BE	CITIES>50000 inhabitants	BEF05S	nonag	786	750000	<lv	<lv	-	-	<lv	<lv	-	>lv	<lv	<lv	-	-	-	-
BE	FLANDERS	BEF06S	nonag	12126	4370000	<lv	<lv	-	-	<lv	<lv	-	>lv	>lv	<lv	-	-	-	-
BE	HOBOKEN	BEF07S	nonag	4	34500	-	-	-	-	-	-	-	-	-	<lv	-	-	-	-
BE	BEERSE	BEF08S	nonag	1	250	-	-	-	-	-	-	-	-	-	>lv	-	-	-	-
BE	LOMMEL	BEF09S	nonag	103	31000	<lv	<lv	-	-	-	-	-	-	-	-	-	-	-	-

CC	zone name	zone code	type	area	pop	SO2-1h	SO2-d	SO2-yr	SO2-W	NO2-h	NO2-y	NOx-y	PM10-d	PM10-y	Lead	Benz	CO	O3-H	O3-V
BE	FLANDERS_NONAG	BEF19S	nonag			-	-	-	-	-	-	-	-	-	-	<lv	<lv	lto-tv	lto-tv
BE	LIEGE	BEW11S	ag	220	410074	<lv	<lv	-	-	<lv	<lv	-	>lv	<lv	<lv	<lv	<lv	-	-
BE	ENGIS	BEW12S	nonag	45	14460	<lv	<lv	-	-	<lv	<lv	-	>lv	<lv	<lv	-	-	-	-
BE	CHARLEROI	BEW13S	ag	141	247615	<lv	<lv	-	-	<lv	lv-mot	-	>lv	>lv	<lv	<lv	<lv	-	-
BE	WALLONIE	BEW14S	nonag	15545	2667367	<lv	<lv	-	-	<lv	<lv	-	>lv	<lv	<lv	-	-	-	-
BE	WALLONIEII	BEW16S	nonag	16484	2669018	-	-	-	-	-	-	-	-	-	-	<lv	<lv	-	-
BE	ARDENNE	BEW17S	nonag	7275	637744	-	-	-	-	-	-	-	-	-	-	-	-	>tv	>tv
BE	WALLONIE III	BEW18S	nonag	9569	2688963	-	-	-	-	-	-	-	-	-	-	-	-	lto-tv	lto-tv
BG	Sofia	BG0001	ag	1350	1234622	<lv	<lv	-	-	lv-mot	>mot	-	>lv	>lv	<lv	<lv	<lv	lto-tv	
BG	Plovdiv	BG0002	ag	1390	446274	<lv	<lv	-	-	<lv	<lv	-	>lv	>lv	<lv	<lv	<lv	lto-tv	
BG	Varna	BG0003	ag	504	341278	<lv	<lv	-	-	<lv	<lv	-	>lv	>lv	<lv	<lv	<lv	lto-tv	
BG	North	BG0004	ag	48063	2562901	<lv	<lv	-	-	<lv	<lv	-	>lv	>lv	<lv	<lv	<lv	lto-tv	
BG	South-West	BG0005	ag	25355	1176784	>lv	>lv	<lv	<lv	<lv	<lv	<lv	>lv	>lv	>lv	-	>lv	lto-tv	lto-tv
BG	South-East	BG0006	ag	34371	1959891	>lv	>lv	-	-	<lv	<lv	-	>lv	>lv	<lv	<lv	<lv	>tv	
CY	CYPRUS	CY001A	nonag	9251	750000	<lv	<lv	<lv	<lv	<lv	<lv	<lv	>lv	>lv	<lv	<lv	<lv	>tv	>tv
CZ	Praha	CZ010	ag	496	1212097	<lv	<lv	<lv	<lv	>mot	>mot	>lv	>lv	>lv	<lv	<lv	<lv	>tv	>tv
CZ	Středočeský kraj	CZ020	nonag	11015	1201827	<lv	<lv	<lv	<lv	<lv	lv-mot	>lv	>lv	>lv	<lv	<lv	<lv	>tv	>tv
CZ	Jihočeský kraj	CZ031	nonag	10057	633264	<lv	<lv	<lv	<lv	<lv	<lv	>lv	<lv	<lv	<lv	<lv	<lv	>tv	>tv
CZ	Plzeňský kraj	CZ032	nonag	7561	561074	<lv	<lv	<lv	<lv	<lv	<lv	>lv	<lv	<lv	<lv	<lv	<lv	>tv	>tv
CZ	Karlovarský kraj	CZ041	nonag	3315	307449	<lv	<lv	<lv	<lv	<lv	<lv	>lv	<lv	<lv	<lv	<lv	<lv	>tv	>tv
CZ	Ústecký kraj	CZ042	nonag	5335	831180	<lv	>lv	<lv	>lv	<lv	lv-mot	>lv	>lv	<lv	<lv	<lv	<lv	>tv	>tv
CZ	Liberecký kraj	CZ051	nonag	3163	433948	<lv	<lv	<lv	<lv	<lv	<lv	>lv	>lv	<lv	<lv	<lv	<lv	>tv	>tv
CZ	Královéhradecký kraj	CZ052	nonag	4758	552212	<lv	<lv	<lv	<lv	<lv	<lv	>lv	>lv	<lv	<lv	<lv	<lv	>tv	>tv
CZ	Pardubický kraj	CZ053	nonag	4518	511400	<lv	<lv	<lv	<lv	<lv	<lv	>lv	>lv	<lv	<lv	<lv	<lv	>tv	>tv
CZ	kraj Vysočina	CZ061	nonag	6796	513677	<lv	<lv	<lv	<lv	<lv	<lv	>lv	<lv	<lv	<lv	<lv	<lv	>tv	>tv
CZ	Jihomoravský kraj	CZ0620	nonag	6966	772001	<lv	<lv	<lv	<lv	<lv	<lv	>lv	>lv	<lv	<lv	<lv	<lv	>tv	>tv
CZ	Brno	CZ0622	ag	230	368533	<lv	<lv	<lv	<lv	<lv	>mot	>lv	>lv	<lv	<lv	<lv	<lv	>tv	>tv
CZ	Olomoucký kraj	CZ071	nonag	5267	641791	<lv	<lv	<lv	<lv	<lv	lv-mot	>lv	>lv	<lv	<lv	<lv	<lv	>tv	>tv
CZ	Zlínský kraj	CZ072	nonag	3963	590780	<lv	<lv	<lv	<lv	<lv	lv-mot	>lv	>lv	<lv	<lv	<lv	<lv	>tv	>tv
CZ	Moravskoslezský kraj	CZ080	ag	5427	1249897	<lv	<lv	<lv	<lv	<lv	lv-mot	>lv	>lv	>lv	<lv	>mot	<lv	>tv	>tv
DE	Naturpark Märkische Schweiz	DEZAXX00010	nonag	205	5700	-	-	<lv	<lv	-	-	<lv	-	-	-	-	-	-	-
DE	Spreewald	DEZAXX00020	nonag	475	50000	-	-	<lv	<lv	-	-	<lv	-	-	-	-	-	-	-

CC	zone name	zone code	type	area	pop	SO2-1h	SO2-d	SO2-yr	SO2-W	NO2-h	NO2-y	NOx-y	PM10-d	PM10-y	Lead	Benz	CO	O3-H	O3-V
DE	Land Brandenburg	DEZAXX0003S	nonag	29480	2547772	-	-	-	-	-	-	-	-	-	-	-	-	>tv	>tv
DE	Orte erhöhter verkehrsbedingter Schadstoffbelastung im Land Brandenburg ab 2005	DEZAXX0006S	nonag	1743	647717	<lv	<lv	-	-	<lv	>mot	-	>lv	<lv	<lv	<lv	<lv	-	-
DE	Kleinstädtischer und ländlicher Raum im Land Brandenburg ab 2005	DEZAXX0007S	nonag	27737	1900055	<lv	<lv	-	-	<lv	<lv	-	<lv	<lv	<lv	<lv	<lv	-	-
DE	Ballungsraum Berlin	DEZBXX0001A	ag	891	3404000	<lv	<lv	-	-	<lv	>mot	-	<lv	<lv	<lv	<lv	<lv	>tv	>tv
DE	Ballungsraum Freiburg	DEZCXX0004A	ag	162	221274	<lv	<lv	-	-	<lv	>mot	-	<lv	<lv	<lv	<lv	<lv	>tv	>tv
DE	Ballungsraum Karlsruhe	DEZCXX0005A	ag	230	324289	<lv	<lv	-	-	<lv	>mot	-	<lv	<lv	<lv	<lv	<lv	>tv	>tv
DE	Ballungsraum Mannheim/Heidelberg	DEZCXX0006A	ag	336	544570	<lv	<lv	-	-	<lv	>mot	-	<lv	<lv	<lv	<lv	<lv	>tv	>tv
DE	Ballungsraum Stuttgart	DEZCXX0007A	ag	838	1393258	<lv	<lv	-	-	>mot	>mot	-	>lv	>lv	<lv	<lv	<lv	>tv	>tv
DE	Regierungsbezirk Karlsruhe (ohne Ballungsräume)	DEZCXX0041S	nonag	6430	6061	<lv	<lv	<lv	<lv	-	-	<lv	-	-	<lv	<lv	<lv	>tv	>tv
DE	Regierungsbezirk Freiburg (ohne Ballungsraum)	DEZCXX0042S	nonag	9249	1969909	<lv	<lv	<lv	<lv	-	-	<lv	<lv	<lv	<lv	<lv	<lv	>tv	>tv
DE	Regierungsbezirk Tübingen	DEZCXX0043S	nonag	8902	1802085	<lv	<lv	<lv	<lv	-	-	<lv	-	-	<lv	<lv	<lv	>tv	>tv
DE	Regierungsbezirk Tübingen mit NO2-Werten < GW	DEZCXX0048S	nonag	8588	1486389	-	-	-	-	<lv	<lv	-	-	-	-	-	-	-	-
DE	Regierungsbezirk Stuttgart (ohne Ballungsraum)	DEZCXX0063S	nonag	9657	2618090	<lv	<lv	<lv	<lv	-	-	<lv	-	-	<lv	<lv	<lv	>tv	>tv
DE	Regierungsbezirk Tübingen mit PM10-Werten < GW	DEZCXX0069S	nonag	8588	1486389	-	-	-	-	-	-	-	<lv	<lv	-	-	-	-	-
DE	Regierungsbezirk Stuttgart ohne Ballungsraum mit NO2-Werten < GW	DEZCXX0071S	nonag	9207	2325161	-	-	-	-	<lv	<lv	-	-	-	-	-	-	-	-
DE	Regierungsbezirk Karlsruhe (ohne Ballungsräume) mit NO2-Werten < GW	DEZCXX0072S	nonag	6180	1709756	-	-	-	-	<lv	<lv	-	-	-	-	-	-	-	-
DE	Regierungsbezirk Freiburg mit NO2-Werten < GW	DEZCXX0073S	nonag	9203	1951285	-	-	-	-	<lv	<lv	-	-	-	-	-	-	-	-
DE	Gebiet (ohne Ballungsräume) mit NO2-Werten > GW+TM	DEZCXX0074S	nonag	1061	825550	-	-	-	-	lv-mot	>mot	-	-	-	-	-	-	-	-
DE	Regierungsbezirk Stuttgart (ohne Ballungsraum) mit PM10-Werten < GW	DEZCXX0075S	nonag	9379	2406373	-	-	-	-	-	-	-	<lv	<lv	-	-	-	-	-
DE	Regierungsbezirk Karlsruhe (ohne Ballungsräume) mit PM10-Werten < GW	DEZCXX0076S	nonag	6345	18449706	-	-	-	-	-	-	-	<lv	<lv	-	-	-	-	-
DE	Gebiet (ohne Ballungsräume) mit PM10-Werten > GW	DEZCXX0077S	nonag	676	579703	-	-	-	-	-	-	-	>lv	<lv	-	-	-	-	-

CC	zone name	zone code	type	area	pop	SO2-1h	SO2-d	SO2-yr	SO2-W	NO2-h	NO2-y	NOx-y	PM10-d	PM10-y	Lead	Benz	CO	O3-H	O3-V
DE	Ballungsraum München	DEZDXX0001A	ag	311	1290000	<lv	<lv	-	-	lv-mot	>mot	-	>lv	<lv	<lv	<lv	<lv	lto-tv	>tv
DE	Ballungsraum Augsburg	DEZDXX0002A	ag	147	260000	<lv	<lv	-	-	<lv	>mot	-	>lv	<lv	<lv	<lv	<lv	lto-tv	>tv
DE	Ballungsraum Nürnberg/Fürth/Erlangen	DEZDXX0003A	ag	323	700000	<lv	<lv	-	-	<lv	>mot	-	<lv	<lv	<lv	<lv	<lv	lto-tv	>tv
DE	Oberbayern ohne Ballungsraum München	DEZDXX0023S	nonag	17235	3000000	<lv	<lv	-	-	<lv	<lv	-	<lv	<lv	<lv	<lv	<lv	lto-tv	>tv
DE	Niederbayern	DEZDXX0024S	nonag	10326	1200000	<lv	<lv	-	-	<lv	<lv	-	<lv	<lv	<lv	<lv	<lv	lto-tv	>tv
DE	Oberpfalz	DEZDXX0025S	nonag	9682	1100000	<lv	<lv	-	-	<lv	lv-mot	-	<lv	<lv	<lv	<lv	<lv	>tv	>tv
DE	Unterfranken	DEZDXX0026S	nonag	8518	1350000	<lv	<lv	-	-	<lv	lv-mot	-	<lv	<lv	<lv	<lv	<lv	>tv	>tv
DE	Mittelfranken ohne Ballungsraum Nürnberg/Fürth/Erlangen	DEZDXX0027S	nonag	6915	1000000	<lv	<lv	-	-	<lv	<lv	-	<lv	<lv	<lv	<lv	<lv	lto-tv	
DE	Oberfranken	DEZDXX0028S	nonag	7220	1100000	<lv	<lv	-	-	<lv	<lv	-	<lv	<lv	<lv	<lv	<lv	lto-tv	lto-tv
DE	Schwaben ohne Ballungsraum Augsburg	DEZDXX0029S	nonag	9914	1500000	<lv	<lv	-	-	<lv	<lv	-	<lv	<lv	<lv	<lv	<lv	lto-tv	
DE	Ballungsraum Niedersachsen-Bremen	DEZEIX0107A	ag	806	770016	<lv	<lv	-	-	<lv	>mot	-	>lv	<lv	<lv	<lv	<lv	lto-tv	
DE	Bremen (Bremerhaven)	DEZEXX0101S	nonag	69	117281	<lv	<lv	-	-	<lv	<lv	-	<lv	<lv	<lv	<lv	<lv	lto-tv	
DE	Ballungsraum I (Rhein-Main)	DEZFXX0001A	ag	1844	2331555	<lv	<lv	-	-	lv-mot	>mot	-	<lv	<lv	<lv	<lv	<lv	>tv	
DE	Ballungsraum II (Kassel)	DEZFXX0002A	ag	275	297488	<lv	<lv	-	-	<lv	>mot	-	<lv	<lv	<lv	<lv	<lv	lto-tv	
DE	Gebiet I (Südhessen)	DEZFXX0003S	nonag	2157	661279	<lv	<lv	-	-	<lv	<lv	-	<lv	<lv	<lv	<lv	<lv	>tv	>tv
DE	Gebiet II (Lahn-Dill-Gebiet)	DEZFXX0004S	nonag	1920	514490	<lv	<lv	-	-	<lv	>mot	-	<lv	<lv	<lv	<lv	<lv	>tv	lto-tv
DE	Gebiet III (Mittel- und Nordhessen)	DEZFXX0005S	nonag	14886	2265613	<lv	<lv	-	-	<lv	>mot	-	<lv	<lv	<lv	<lv	<lv	>tv	>tv
DE	Ballungsraum Hamburg	DEZGLX0001A	ag	1072	2083043	<lv	<lv	-	-	<lv	>mot	-	<lv	<lv	<lv	<lv	<lv	lto-tv	lto-tv
DE	Ballungsraum Rostock	DEZHXX0003A	ag	347	227410	<lv	<lv	-	-	<lv	>mot	-	<lv	<lv	<lv	<lv	<lv	lto-tv	<lto
DE	Mittlere Städte im Land Mecklenburg-Vorpommern	DEZHXX0004S	nonag	1318	520570	<lv	<lv	-	-	<lv	<lv	-	<lv	<lv	<lv	<lv	<lv	-	-
DE	Ländlicher Raum im Land Mecklenburg-Vorpommern	DEZHXX0005S	nonag	21624	939120	<lv	<lv	-	-	<lv	<lv	-	<lv	<lv	<lv	<lv	<lv	-	-
DE	Ländlicher Hintergrund im Land Mecklenburg-Vorpommern	DEZHXX0006O	nonag	21624	716027	-	-	<lv	<lv	-	-	<lv	-	-	-	-	-	-	-
DE	Mecklenburg-Vorpommern (ohne Ballungsraum Rostock)	DEZHXX0007S	nonag	22941	1459700	-	-	-	-	-	-	-	-	-	-	-	-	lto-tv	lto-tv
DE	Nationalpark Wattenmeer	DEZIXX0021O	nonag			-	-	<lv	<lv	-	-	<lv	-	-	-	-	-	-	-
DE	Nationalpark Harz	DEZIXX0022O	nonag			-	-	<lv	<lv	-	-	<lv	-	-	-	-	-	-	-
DE	Niedersachsen-Nord	DEZIXX0101S	nonag	12929	1809405	<lv	<lv	-	-	<lv	<lv	-	<lv	<lv	<lv	<lv	<lv	lto-tv	lto-tv

CC	zone name	zone code	type	area	pop	SO2-1h	SO2-d	SO2-yr	SO2-W	NO2-h	NO2-y	NOx-y	PM10-d	PM10-y	Lead	Benz	CO	O3-H	O3-V
DE	Niedersachsen-Mitte	DEZIXX0102S	nonag	22123	2444936	<lv	<lv	-	-	<lv	<lv	-	<lv	<lv	<lv	<lv	<lv	lto-tv	lto-tv
DE	Niedersachsen-Sued	DEZIXX0103S	nonag	10049	1602659	<lv	<lv	-	-	<lv	<lv	-	<lv	<lv	<lv	<lv	<lv	>tv	>tv
DE	Ballungsraum Hannover-Braunschweig	DEZIXX0104A	ag	1759	1551253	<lv	<lv	-	-	<lv	<lv	-	<lv	<lv	<lv	<lv	<lv	lto-tv	lto-tv
DE	Ballungsraum Osnabrueck	DEZIXX0105A	ag	290	246385	<lv	<lv	-	-	<lv	<lv	-	<lv	<lv	<lv	<lv	<lv	lto-tv	lto-tv
DE	Ballungsraum Goettingen	DEZIXX0106A	ag	117	122187	<lv	<lv	-	-	<lv	<lv	-	<lv	<lv	<lv	<lv	<lv	lto-tv	lto-tv
DE	urbane Bereiche und ländlicher Raum im Land Nordrhein-Westfalen	DEZJXX0001S	nonag	28730	8477755	<lv	<lv	-	-	<lv	>mot	-	>lv	<lv	<lv	<lv	<lv	>tv	lto-tv
DE	Wuppertal	DEZJXX0002A	ag	479	807319	<lv	<lv	-	-	<lv	>mot	-	<lv	<lv	<lv	<lv	<lv	lto-tv	lto-tv
DE	Münster	DEZJXX0003A	ag	303	271927	<lv	<lv	-	-	<lv	>mot	-	<lv	<lv	<lv	<lv	<lv	lto-tv	
DE	Köln	DEZJXX0004A	ag	1046	2031349	<lv	<lv	-	-	<lv	>mot	-	>lv	<lv	<lv	<lv	<lv	lto-tv	lto-tv
DE	Hagen	DEZJXX0005A	ag	265	301676	<lv	<lv	-	-	<lv	>mot	-	>lv	<lv	<lv	<lv	<lv	lto-tv	
DE	Essen	DEZJXX0006A	ag	839	1870172	<lv	<lv	-	-	<lv	>mot	-	>lv	<lv	<lv	<lv	<lv	lto-tv	lto-tv
DE	Duisburg	DEZJXX0007A	ag	653	1298712	<lv	<lv	-	-	<lv	>mot	-	>lv	<lv	<lv	<lv	<lv	lto-tv	
DE	Dortmund	DEZJXX0008A	ag	549	950885	<lv	<lv	-	-	<lv	>mot	-	>lv	<lv	<lv	<lv	<lv	lto-tv	lto-tv
DE	Düsseldorf	DEZJXX0009A	ag	495	967214	<lv	<lv	-	-	<lv	>mot	-	>lv	<lv	<lv	<lv	<lv	lto-tv	lto-tv
DE	Bielefeld	DEZJXX0010A	ag	259	324938	<lv	<lv	-	-	<lv	lv-mot	-	<lv	<lv	<lv	<lv	<lv	lto-tv	
DE	Aachen	DEZJXX0011A	ag	262	388743	<lv	<lv	-	-	<lv	>mot	-	>lv	<lv	<lv	<lv	<lv	lto-tv	
DE	Stolberg	DEZJXX0012L	ag	98	58329	-	-	-	-	-	-	-	-	-	<lv	-	-	-	-
DE	Mönchengladbach	DEZJXX0013A	ag	170	260434	<lv	<lv	-	-	<lv	lv-mot	-	<lv	<lv	<lv	<lv	<lv	lto-tv	lto-tv
DE	Braubach	DEZKXX0001L	nonag	29	1658	-	-	-	-	-	-	-	-	-	<lv	-	-	-	-
DE	Krautscheid/Seifen	DEZKXX0002L	nonag	25	4808	-	-	-	-	-	-	-	-	-	<lv	-	-	-	-
DE	ländliche Gebiete im Land Rheinland-Pfalz	DEZKXX0003L	nonag	19775	4063988	-	-	-	-	-	-	-	-	-	<lv	-	-	-	-
DE	Koblenz/Neuwied	DEZKXX0004S	nonag	186	175105	<lv	<lv	-	-	<lv	>mot	-	<lv	<lv	-	<lv	<lv	-	-
DE	Trier	DEZKXX0005S	nonag	120	100163	<lv	<lv	-	-	<lv	<lv	-	<lv	<lv	-	<lv	<lv	-	-
DE	Mainz	DEZKXX0006S	nonag	98	186061	<lv	<lv	-	-	<lv	>mot	-	<lv	<lv	-	<lv	<lv	-	-
DE	Worms/Fankenthal/Ludwigs hafen	DEZKXX0007S	nonag	250	292149	<lv	<lv	-	-	<lv	>mot	-	<lv	<lv	-	<lv	<lv	-	-
DE	Oberheingraben	DEZKXX0008S	nonag	4500	1096947	<lv	<lv	-	-	<lv	<lv	-	<lv	<lv	-	<lv	<lv	-	-
DE	Nord-West Gebiet im Land Rheinland-Pfalz	DEZKXX0009S	nonag	14675	2209418	<lv	<lv	-	-	<lv	<lv	-	<lv	<lv	-	<lv	<lv	-	-
DE	Rheinland-Pfalz	DEZKXX0010S	nonag	19829	4061105	-	-	-	-	-	-	-	-	-	-	-	-	>tv	>tv
DE	Ballungsraum Kiel	DEZLXX0001A	ag	207	303919	<lv	<lv	-	-	<lv	>mot	-	<lv	<lv	<lv	<lv	<lv	lto-tv	
DE	ländlicher Raum im Land Schleswig-Holstein	DEZLXX0001O	nonag	13791	1197705	-	-	<lv	<lv	-	-	<lv	-	-	-	-	-	-	-
DE	urbane Bereiche und	DEZLXX0001S	nonag	14981	1882218	<lv	<lv	-	-	-	-	-	<lv	<lv	<lv	-	-	lto-tv	lto-tv

CC	zone name	zone code	type	area	pop	SO2-1h	SO2-d	SO2-yr	SO2-W	NO2-h	NO2-y	NOx-y	PM10-d	PM10-y	Lead	Benz	CO	O3-H	O3-V	
	ländlicher Raum im Land Schleswig-Holstein																			
DE	Ballungsraum Lübeck	DEZLXX0002A	ag	348	266477	<lv	<lv	-	-	<lv	lv-mot	-	<lv	<lv	<lv	<lv	<lv	lto-tv		
DE	ländlicher Raum im Land Schleswig-Holstein	DEZLXX0003S	nonag	13791	1157711	-	-	-	-	<lv	<lv	-	-	-	-	<lv	<lv	-	-	
DE	Itzehoe	DEZLXX0005S	nonag	28	34308	-	-	-	-	<lv	>mot	-	-	-	-	<lv	<lv	-	-	
DE	Ratzeburg	DEZLXX0006S	nonag	30	13830	-	-	-	-	<lv	lv-mot	-	-	-	-	<lv	<lv	-	-	
DE	Städte 10-100000 Einwohner ohne Itzehoe und Ratzeburg im Land Schleswig-Holstein	DEZLXX0007S	nonag	1132	676369	-	-	-	-	<lv	<lv	-	-	-	-	<lv	<lv	-	-	
DE	Ballungsraum Saarbrücken (BSB)	DEZMXX0001A	ag	285	275124	<lv	<lv	-	-	<lv	lv-mot	-	<lv	<lv	<lv	<lv	<lv	-	-	
DE	Gebiet Dillingen-Saarlouis (UDS)	DEZMXX0002S	nonag	65	59378	<lv	<lv	-	-	<lv	<lv	-	<lv	<lv	<lv	<lv	<lv	-	-	
DE	Rest-Saarland (RS)	DEZMXX0003S	nonag	2218	703998	<lv	<lv	-	-	<lv	<lv	-	<lv	<lv	<lv	<lv	<lv	-	-	
DE	Saarland	DEZMXX0004S	nonag	2569	1038500	-	-	-	-	-	-	-	-	-	-	-	-	>tv	>tv	
DE	Leipzig	DEZNXX0001A	ag	328	516365	<lv	<lv	-	-	<lv	>mot	-	>lv	<lv	<lv	<lv	<lv	lto-tv	lto-tv	
DE	Dresden	DEZNXX0002A	ag	485	633496	<lv	<lv	-	-	<lv	>mot	-	<lv	<lv	<lv	<lv	<lv	>tv	>tv	
DE	Chemnitz	DEZNXX0003A	ag	221	259246	<lv	<lv	-	-	<lv	>mot	-	<lv	<lv	<lv	<lv	<lv	lto-tv		
DE	Leipziger Umland	DEZNXX0004S	nonag	2485	434043	<lv	<lv	-	-	<lv	<lv	-	<lv	<lv	<lv	<lv	<lv	-	-	
DE	Untere Elbe / Lausitz	DEZNXX0005S	nonag	3214	651999	<lv	<lv	-	-	<lv	<lv	-	<lv	<lv	<lv	<lv	<lv	-	-	
DE	Erzgebirge / Vogtland	DEZNXX0006S	nonag	5146	1282355	<lv	<lv	-	-	<lv	<lv	-	<lv	<lv	<lv	<lv	<lv	-	-	
DE	Nordwestsachsen	DEZNXX0007S	nonag	1894	174240	<lv	<lv	-	-	<lv	<lv	-	<lv	<lv	<lv	<lv	<lv	-	-	
DE	Oberlausitzer Heide- und Teichlandschaft	DEZNXX0008S	nonag	2555	247942	<lv	<lv	-	-	<lv	<lv	-	<lv	<lv	<lv	<lv	<lv	-	-	
DE	Mittelgebirgskamm	DEZNXX0009S	nonag	2099	226170	<lv	<lv	-	-	<lv	<lv	-	<lv	<lv	<lv	<lv	<lv	-	-	
DE	Ozongebiet Sachsen (ohne Ballungsräume)	DEZNXX0010S	nonag	17393	3016749	-	-	-	-	-	-	-	-	-	-	-	-	>tv	>tv	
DE	Waldgebiet Oberes Erzgebirge	DEZNXX00110	nonag	2099	226170	-	-	<lv	<lv	-	-	<lv	-	-	-	-	-	-	-	
DE	Waldgebiete Nordsachsen	DEZNXX00120	nonag	4449	422182	-	-	<lv	<lv	-	-	<lv	-	-	-	-	-	-	-	
DE	Magdeburg	DEZOXX0001A	ag	259	263116	<lv	<lv	-	-	<lv	lv-mot	-	<lv	<lv	-	<lv	<lv	lto-tv		
DE	Halle	DEZOXX0002A	ag	135	235720	<lv	<lv	-	-	<lv	<lv	-	<lv	<lv	-	<lv	<lv	lto-tv	lto-tv	
DE	Altmark	DEZOXX0003S	nonag	4735	224026	<lv	<lv	-	-	<lv	<lv	-	<lv	<lv	-	<lv	<lv	-	-	
DE	Börde	DEZOXX0004S	nonag	4124	321377	<lv	<lv	-	-	<lv	<lv	-	<lv	<lv	-	<lv	<lv	-	-	
DE	Harz	DEZOXX0005S	nonag	3354	394137	<lv	<lv	-	-	<lv	<lv	-	>lv	<lv	-	<lv	<lv	>tv	>tv	
DE	Anhalt-Bitterfeld-Wittenberg	DEZOXX0006S	nonag	4299	493630	<lv	<lv	-	-	<lv	<lv	-	<lv	<lv	-	<lv	<lv	-	-	
DE	Saale-Unstrut	DEZOXX0007S	nonag	3613	509781	<lv	<lv	-	-	<lv	<lv	-	<lv	<lv	-	<lv	<lv	-	-	

CC	zone name	zone code	type	area	pop	SO2-1h	SO2-d	SO2-yr	SO2-W	NO2-h	NO2-y	NOx-y	PM10-d	PM10-y	Lead	Benz	CO	O3-H	O3-V
DE	Mansfelder Land	DEZOXX0008L	nonag	760	98538	-	-	-	-	-	-	-	-	-	<lv	-	-	-	-
DE	Sachsen-Anhalt-Rest	DEZOXX0009L	nonag	19757	2343249	-	-	-	-	-	-	-	-	-	<lv	-	-	-	-
DE	Sachsen-Anhalt-Nord	DEZOXX0010S	nonag	8858	512113	-	-	-	-	-	-	-	-	-	-	-	-	>tv	>tv
DE	Sachsen-Anhalt-Südost	DEZOXX0011S	nonag	7911	1003411	-	-	-	-	-	-	-	-	-	-	-	-	>tv	>tv
DE	Naturpark Drömling	DEZOXX0012O	nonag			-	-	<lv	<lv	-	-	<lv	-	-	-	-	-	-	-
DE	Naturpark Harz	DEZOXX0013O	nonag			-	-	<lv	<lv	-	-	<lv	-	-	-	-	-	-	-
DE	Sachsen-Anhalt	DEZOXX0014S	nonag	20518	2441787	-	-	-	-	-	-	-	-	-	-	-	-	-	-
DE	Gebiet Thüringen 3	DEZPXX0003S	nonag	13766	1200517	-	-	-	-	<lv	<lv	-	<lv	<lv	-	<lv	<lv	-	-
DE	Gebiet Thüringen-Gesamt	DEZPXX0006S	nonag	16171	2345127	<lv	<lv	-	-	-	-	-	-	-	<lv	-	-	>tv	>tv
DE	Gebiet Thüringen Ökosystem/Vegetation	DEZPXX0007O	nonag			-	-	<lv	<lv	-	-	<lv	-	-	-	-	-	-	-
DE	Gebiet Thüringen 1	DEZPXX0008S	nonag	623	473889	-	-	-	-	<lv	lv-mot	-	>lv	<lv	-	<lv	<lv	-	-
DE	Gebiet Thüringen 2	DEZPXX0009S	nonag	1782	670721	-	-	-	-	<lv	<lv	-	<lv	<lv	-	<lv	<lv	-	-
DK	København	DK0001	ag	630	954612	<lv	<lv	<lv	<lv	<lv	>mot	<lv	>lv	<lv	<lv	<lv	<lv	lto-tv	lto-tv
DK	Århus	DK0002	ag	470	298538	<lv	<lv	<lv	<lv	<lv	<lv	<lv	<lv	<lv	<lv	<lv	<lv	<lv	<lto
DK	Remaining DK	DK0003	nonag	42682	2222641	<lv	<lv	<lv	<lv	<lv	<lv	<lv	>lv	<lv	<lv	<lv	<lv	lto-tv	lto-tv
EE	Tallinn	EE0010	ag	158	408000	<lv	<lv	<lv	<lv	<lv	<lv	>lv	>lv	<lv	<lv	<lv	<lv	lto-tv	>tv
EE	Kohtla-Järve	EE0011	ag	42	46032	<lv	<lv	<lv	<lv	<lv	<lv	<lv	>lv	<lv	<lv	<lv	<lv	>tv	lto-tv
EE	Põhja-Eesti	EE0012	nonag	11162	314460	<lv	<lv	<lv	<lv	<lv	<lv	<lv	<lv	<lv	<lv	<lv	<lv	>tv	lto-tv
EE	Lõuna-Eesti	EE0013	nonag	32176	623106	<lv	<lv	<lv	<lv	<lv	<lv	<lv	<lv	<lv	<lv	-	<lv	>tv	lto-tv
ES	ZONA INDUSTRIAL DE HUELVA	ES0103	nonag	711	197889	<lv	<lv	-	-	<lv	<lv	-	>lv	>lv	<lv	<lv	<lv	>tv	lto-tv
ES	ZONA INDUSTRIAL DE BAHÍA DE ALGECIRAS	ES0104	nonag	584	223403	<lv	<lv	-	-	<lv	lv-mot	-	>lv	>lv	<lv	<lv	<lv	lto-tv	lto-tv
ES	ZONA INDUSTRIAL DE PUENTE NUEVO	ES0105	nonag	448	3109	<lv	<lv	-	-	<lv	<lv	-	<lv	<lv	<lv	<lv	<lv	<lto	
ES	ZONA INDUSTRIAL DE BAILÉN	ES0108	nonag	118	18362	<lv	<lv	-	-	<lv	<lv	-	>lv	>lv	<lv	<lv	<lv	<lto	
ES	ANDALUCIA-NÚCLEOS DE 50.000 A 250.000 HABITANTES	ES0109	nonag	1778	811152	<lv	<lv	-	-	lv-mot	lv-mot	-	>lv	>lv	<lv	<lv	<lv	>tv	>tv
ES	CÓRDOBA	ES0111	ag	141	322867	<lv	<lv	-	-	<lv	<lv	-	>lv	>lv	<lv	<lv	<lv	>tv	>tv
ES	ANDALUCIA-ZONAS RURALES	ES0115	nonag	80839	3338184	<lv	<lv	<lv	<lv	<lv	<lv	<lv	>lv	<lv	<lv	<lv	<lv	>tv	>tv
ES	ZONA INDUSTRIAL DE CARBONERAS	ES0116	nonag	696	33578	<lv	<lv	-	-	<lv	<lv	-	>lv	>lv	<lv	<lv	<lv	>tv	>tv
ES	BAHÍA DE CÁDIZ	ES0117	ag	399	345560	<lv	<lv	-	-	<lv	<lv	-	>lv	>lv	<lv	<lv	<lv	lto-tv	>tv
ES	GRANADA Y ÁREA METROPOLITANA	ES0118	ag	559	436028	<lv	<lv	-	-	<lv	lv-mot	-	>lv	>lv	<lv	<lv	<lv	>tv	>tv
ES	MÁLAGA Y COSTA DEL SOL	ES0119	ag	1239	1095758	<lv	<lv	-	-	<lv	<lv	-	>lv	<lv	<lv	<lv	<lv	>tv	>tv

CC	zone name	zone code	type	area	pop	SO2-1h	SO2-d	SO2-yr	SO2-W	NO2-h	NO2-y	NOx-y	PM10-d	PM10-y	Lead	Benz	CO	O3-H	O3-V
ES	SEVILLA Y ÁREA METROPOLITANA	ES0120	ag	1390	1149782	<lv	<lv	-	-	lv-mot	>mot	-	>lv	>lv	<lv	<lv	<lv	>tv	>tv
ES	COMUNIDAD DE ARAGÓN PIRINEOS	ES0201	nonag	16932	199800	<lv	<lv	<lv	<lv	<lv	<lv	<lv	<lv	<lv			<lv	>tv	>tv
ES	VALLE DEL EBRO	ES0202	nonag	10489	177125	<lv	<lv	<lv	<lv	<lv	<lv	<lv	<lv	<lv			<lv	>tv	>tv
ES	BAJO ARAGÓN	ES0203	nonag	4417	57959	<lv	<lv	<lv	<lv	<lv	<lv	<lv	<lv	<lv				>tv	>tv
ES	CORDILLERA IBÉRICA	ES0204	nonag	15726	142530	<lv	<lv	<lv	<lv	<lv	<lv	<lv	<lv	<lv			<lv	>tv	>tv
ES	ZARAGOZA	ES0205	ag	166	626801	<lv	<lv	-	-	<lv	lv-mot	-	>lv	>lv	<lv		<lv	lto-tv	lto-tv
ES	OCCIDENTAL	ES0301	nonag	4597	99987	<lv	<lv	-	-	<lv	<lv	-	<lv	<lv			<lv	lto-tv	<lto
ES	CENTRAL	ES0302	nonag	3052	622024	<lv	<lv	-	-	<lv	>mot	-	>lv	>lv		<lv	<lv	lto-tv	<lto
ES	ORIENTAL	ES0303	nonag	2773	80413	<lv	<lv	<lv	<lv	<lv	<lv	<lv	<lv	<lv				lto-tv	lto-tv
ES	GIJÓN	ES0304	ag	182	274472	<lv	<lv	-	-	<lv	<lv	-	>lv	>lv		<lv	<lv	lto-tv	<lto
ES	PALMA	ES0401	ag	74	369995	<lv	<lv	<lv	<lv	<lv	lv-mot	<lv	<lv	<lv	<lv	<lv	<lv	lto-tv	lto-tv
ES	SIERRA DE TRAMUNTANA	ES0402	noag	740	60060	<lv	<lv	<lv	<lv	<lv	<lv	<lv	<lv	<lv	<lv	<lv	<lv	<lto	<lto
ES	MENORCA-MAÓ-ES CASTELL	ES0409	noag	47	37230	<lv	<lv	<lv	<lv	<lv	<lv	<lv	<lv	<lv	<lv	<lv	<lv	lto-tv	<lto
ES	RESTO MENORCA	ES0410	noag	650	53005	<lv	<lv	<lv	<lv	<lv	<lv	<lv	<lv	<lv	<lv	<lv	<lv	<lto	<lto
ES	EIVISSA	ES0411	noag	11	44114	<lv	<lv	<lv	<lv	<lv	<lv	<lv	<lv	<lv	<lv	<lv	<lv	lto-tv	lto-tv
ES	RESTO EIVISSA-FORMENTERA	ES0412	noag	643	82026	<lv	<lv	<lv	<lv	<lv	<lv	<lv	<lv	<lv	<lv	<lv	<lv	<lto	lto-tv
ES	RESTO MALLORCA	ES0413	noag	2827	384220	<lv	<lv	<lv	<lv	<lv	<lv	<lv	<lv	<lv	<lv	<lv	<lv	>tv	lto-tv
ES	LAS PALMAS DE GRAN CANARIA	ES0501	ag	101	377203	<lv	<lv	-	-	<lv	<lv	-	>lv	<lv			<lv	<lto	<lto
ES	CENTRO ISLA DE GRAN CANARIA	ES0502	ag	615	352348	<lv	<lv	<lv	<lv	>mot	<lv	<lv	>lv	<lv					
ES	SUR-OESTE ISLA DE GRAN CANARIA	ES0503	nonag	845	85828	<lv	<lv	<lv	<lv	<lv	<lv	<lv	>lv	>lv					
ES	FUERTEVENTURA-LANZAROTE	ES0504	nonag	2506	226752	<lv	<lv	-	-	<lv	<lv	-	>lv	>lv					
ES	STA. CRUZ DE TENERIFE-LA LAGUNA	ES0505	ag	253	365249	>lv	>lv	-	-	<lv	<lv	-	>lv	>lv		<lv	<lv	lto-tv	<lto
ES	NORTE ISLA DE TENERIFE	ES0506	ag	759	258091			-	-			-							
ES	SUR ISLA DE TENERIFE	ES0507	nonag	1023	241730	<lv	>lv	<lv	<lv	<lv	<lv	<lv	>lv	>lv				<lto	<lto
ES	LA GOMERA, EL HIERRO Y LA PALMA	ES0508	nonag	1347	118702			-	-			-							
ES	BAHÍA DE SANTANDER	ES0601	ag	50	234015	<lv	<lv	<lv	<lv	<lv	<lv	<lv	>lv	<lv	<lv	<lv	<lv	lto-tv	<lto
ES	COMARCA DE TORRELAVEGA	ES0602	nonag	186	81095	<lv	<lv	<lv	<lv	<lv	<lv	<lv	>lv	>lv	<lv		<lv	<lto	<lto
ES	CANTABRIA ZONA LITORAL	ES0603	nonag	1463	194908	<lv	<lv	<lv	<lv	<lv	<lv	<lv	<lv	<lv	<lv		<lv	lto-tv	<lto

CC	zone name	zone code	type	area	pop	SO2-1h	SO2-d	SO2-yr	SO2-W	NO2-h	NO2-y	NOx-y	PM10-d	PM10-y	Lead	Benz	CO	O3-H	O3-V
ES	CANTABRIA ZONA INTERIOR	ES0604	nonag	3493	62806	<lv	<lv	<lv	<lv	<lv	<lv	<lv	<lv	<lv	<lv		<lv	lto-tv	lto-tv
ES	COMARCA DE PUERTOLLANO	ES0705	nonag	3305	72513	<lv	<lv	-	-	<lv	<lv	-	>lv	>lv	<lv	<lv	<lv	>tv	>tv
ES	CASTILLA LA MANCHA - ZONAS INDUSTRIALES Y DENSAMENTE POBLADAS	ES0706	nonag	9534	578754	<lv	<lv	-	-	<lv	<lv	-	>lv	>lv	<lv	<lv	<lv	>tv	>tv
ES	LA MANCHA	ES0707	nonag	21025	802831	<lv	<lv	-	-	<lv	<lv	<lv	>lv	<lv	<lv	<lv	<lv	>tv	>tv
ES	CASTILLA LA MANCHA - SIERRAS Y ZONAS RURALES.	ES0708	nonag	45560	523206	<lv	<lv	<lv		<lv	<lv	<lv	<lv	<lv				>tv	>tv
ES	BURGOS	ES0801	ag	22	161984	<lv	<lv	-	-	<lv	<lv	-	<lv	<lv	<lv	<lv	<lv	>tv	>tv
ES	LEÓN Y SAN ÁNDRES DEL RABANEDO	ES0802	ag	19	163296	<lv	<lv	-	-	<lv	<lv	-	>lv	<lv	<lv		<lv	lto-tv	lto-tv
ES	SALAMANCA Y SANTA MARTA DE TORMES	ES0803	ag	19	168341	<lv	<lv	-	-	<lv	<lv	-	<lv	<lv	<lv		<lv	lto-tv	lto-tv
ES	VALLADOLID-LAGUNA DE DUERO	ES0804	ag	47	360000	<lv	<lv	-	-	<lv	lv-mot	-	<lv	<lv	<lv	<lv	<lv	>tv	>tv
ES	ARANDA DE DUERO	ES0805	nonag	8	29641	<lv	<lv	-	-	<lv	<lv	-	<lv	<lv	<lv		<lv	lto-tv	lto-tv
ES	MIRANDA DE EBRO	ES0806	nonag	5	35397	<lv	<lv	-	-	<lv	<lv	-	>lv	<lv	<lv		<lv	lto-tv	lto-tv
ES	ANLLARES	ES0807	nonag	530	11209	<lv	<lv	-	-	<lv	<lv	-	<lv	<lv	<lv		<lv		
ES	PONFERRADA	ES0808	nonag	10	61469	>lv	<lv	-	-	<lv	<lv	-	<lv	<lv	<lv		<lv	>tv	lto-tv
ES	LA ROBLA	ES0809	nonag	2	3862	>lv	>lv	-	-	<lv	<lv	-	<lv	<lv	<lv		<lv	lto-tv	lto-tv
ES	VELILLA DEL RÍO CARRIÓN Y GUARDO	ES0810	nonag	4	10665	>lv	<lv	-	-	<lv	<lv	-	<lv	<lv	<lv		<lv	lto-tv	lto-tv
ES	ÁREA DE PALENCIA	ES0811	nonag	25	90646	<lv	<lv	-	-	<lv	<lv	-	<lv	<lv	<lv	<lv	<lv	lto-tv	lto-tv
ES	RESTO DEL TERRITORIO II	ES0813	nonag	93500	1400000	<lv	<lv			<lv	<lv		<lv	<lv	<lv		<lv	>tv	>tv
ES	ÁREA DE NÚCLEOS MEDIANOS	ES0814	nonag	28	235000	<lv	<lv	-	-	<lv	<lv	-	<lv	<lv	<lv	<lv	<lv	>tv	>tv
ES	ÁREA DE BARCELONA	ES0901	ag	341	2803286	<lv	<lv	-	-	lv-mot	>mot	-	>lv	>lv	<lv	<lv	<lv	>tv	>tv
ES	VALLÈS-BAIX LLOBREGAT	ES0902	ag	1177	1322292	<lv	<lv	-	-	lv-mot	>mot	-	>lv	>lv	<lv	<lv	<lv	lto-tv	lto-tv
ES	PENEDÈS - GARRAF	ES0903	nonag	1418	427985	<lv	<lv	-	-	<lv	<lv	-	>lv	>lv	<lv	<lv	<lv	lto-tv	>tv
ES	CAMP DE TARRAGONA	ES0904	nonag	994	408420	<lv	<lv	-	-	<lv	<lv	-	<lv	<lv	<lv	<lv	<lv	lto-tv	>tv
ES	CATALUNYA CENTRAL	ES0905	nonag	2764	274995	<lv	<lv	-	-	<lv	<lv	-	>lv	>lv	<lv	<lv	<lv	lto-tv	lto-tv
ES	PLANA DE VIC	ES0906	nonag	806	139395	<lv	<lv	-	-	<lv	<lv	-	>lv	>lv	<lv	<lv	<lv	>tv	>tv
ES	MARESME	ES0907	nonag	501	493108	<lv	<lv	-	-	<lv	<lv	-	>lv	<lv	<lv	<lv	<lv	lto-tv	lto-tv
ES	COMARQUES DE GIRONA	ES0908	nonag	3672	377089	<lv	<lv	-	-	<lv	<lv	-	>lv	>lv	<lv	<lv	<lv	>tv	>tv
ES	EMPORDÀ	ES0909	nonag	1346	244914	<lv	<lv	<lv	<lv	<lv	<lv	<lv	<lv	<lv	<lv	<lv	<lv	>tv	>tv
ES	ALT LLOBREGAT	ES0910	nonag	2090	64280	<lv	<lv	-	-	<lv	<lv	-	<lv	<lv	<lv	<lv	<lv		

CC	zone name	zone code	type	area	pop	SO2-1h	SO2-d	SO2-yr	SO2-W	NO2-h	NO2-y	NOx-y	PM10-d	PM10-y	Lead	Benz	CO	O3-H	O3-V
ES	PIRINEU ORIENTAL	ES0911	nonag	2794	63232	<lv	<lv	-	-	<lv	<lv	-	<lv	<lv	<lv	<lv	<lv	>tv	>tv
ES	PIRINEU OCCIDENTAL	ES0912	nonag	2918	25903	<lv	<lv	-	-	<lv	<lv	-	<lv	<lv	<lv	<lv	<lv	lto-tv	>tv
ES	PREPIRINEU	ES0913	nonag	2414	22586	<lv	<lv	-	-	<lv	<lv	-	<lv	<lv	<lv	<lv	<lv	>tv	>tv
ES	TERRES DE PONENT	ES0914	nonag	4710	344303	<lv	<lv	<lv	<lv	<lv	<lv	<lv	>lv	>lv	<lv	<lv	<lv	>tv	>tv
ES	TERRES DE L'EBRE	ES0915	nonag	3951	198629	<lv	<lv	-	-	<lv	<lv	-	<lv	<lv	<lv	<lv	<lv	>tv	>tv
ES	CERVOL-ELS PORTS. ÀREA COSTERA	ES1001	nonag	1213	85250	<lv	<lv	<lv	<lv	<lv	<lv	<lv	<lv	<lv	<lv	<lv	<lv	lto-tv	>tv
ES	CERVOL-ELS PORTS. ÀREA INTERIOR	ES1002	nonag	1964	16492	<lv	<lv	<lv	<lv	<lv	<lv	<lv	<lv	<lv	<lv	<lv	<lv	>tv	>tv
ES	MIJARES-PEÑAGOLOSA. ÀREA COSTERA	ES1003	nonag	1006	205202	<lv	<lv	-	-	<lv	<lv	-	>lv	>lv	<lv	<lv	<lv	lto-tv	>tv
ES	MIJARES-PEÑAGOLOSA. ÀREA INTERIOR	ES1004	nonag	1221	10046	<lv	<lv	-	-	<lv	<lv	-	<lv	<lv	<lv	<lv	<lv	>tv	lto-tv
ES	PALANCIA-JAVALAMBRE. ÀREA COSTERA	ES1005	nonag	436	130381	<lv	<lv	-	-	<lv	<lv	-	<lv	<lv	<lv	<lv	<lv	lto-tv	lto-tv
ES	PALANCIA-JAVALAMBRE. ÀREA INTERIOR	ES1006	nonag	966	24085	<lv	<lv	-	-	<lv	<lv	-	<lv	<lv	<lv	<lv	<lv	>tv	<lto
ES	TURIA. ÀREA COSTERA	ES1007	nonag	1087	287458	<lv	<lv	-	-	<lv	<lv	-	<lv	<lv	<lv	<lv	<lv	>tv	>tv
ES	TURIA. ÀREA INTERIOR	ES1008	nonag	2152	43779	<lv	<lv	-	-	<lv	<lv	-	<lv	<lv	<lv	<lv	<lv	>tv	lto-tv
ES	JUCAR-CABRIEL. ÀREA COSTERA	ES1009	nonag	1250	292774	<lv	<lv	-	-	<lv	<lv	-	<lv	<lv	<lv	<lv	<lv	lto-tv	>tv
ES	JUCAR-CABRIEL. ÀREA INTERIOR	ES1010	nonag	3950	80551	<lv	<lv	<lv	<lv	<lv	<lv	<lv	<lv	<lv	<lv	<lv	<lv	>tv	>tv
ES	BÉTICA-SERPIS. ÀREA COSTERA	ES1011	nonag	1777	455497	<lv	<lv	-	-	<lv	<lv	-	<lv	<lv	<lv	<lv	<lv	lto-tv	>tv
ES	BÉTICA-SERPIS. ÀREA INTERIOR	ES1012	nonag	2228	247522	<lv	<lv	-	-	<lv	<lv	-	<lv	<lv	<lv	<lv	<lv	lto-tv	>tv
ES	SEGURA-VINALOPÓ. ÀREA COSTERA	ES1013	nonag	2177	703218	<lv	<lv	-	-	<lv	<lv	-	>lv	>lv	<lv	<lv	<lv	>tv	>tv
ES	SEGURA-VINALOPÓ. ÀREA INTERIOR	ES1014	nonag	798	166989	<lv	<lv	-	-	<lv	<lv	-	<lv	<lv	<lv	<lv	<lv	lto-tv	>tv
ES	CASTELLÓ	ES1015	ag	109	172110	<lv	<lv	-	-	<lv	<lv	-	>lv	<lv	<lv	<lv	<lv	lto-tv	lto-tv
ES	L'HORTA	ES1016	ag	393	1344118	<lv	<lv	-	-	<lv	>mot	-	>lv	<lv	<lv	<lv	<lv	lto-tv	<lto
ES	ALACANT	ES1017	ag	201	322431	<lv	<lv	-	-	<lv	<lv	-	>lv	<lv	<lv	<lv	<lv	lto-tv	lto-tv
ES	ELX	ES1018	ag	326	219032	<lv	<lv	-	-	<lv	<lv	-	>lv	<lv	<lv	<lv	<lv	lto-tv	<lto
ES	CÁCERES	ES1101	ag	9	79306	<lv	<lv	-	-	<lv	<lv	-	<lv	<lv	<lv	<lv	<lv	>tv	>tv
ES	BADAJOS	ES1102	ag	14	132832	<lv	<lv	-	-	<lv	<lv	-	<lv	<lv	<lv	<lv	<lv	>tv	lto-tv
ES	NÚCLEOS DE POBLACIÓN DE MÁS DE 20.000 HABITANTES	ES1103	nonag	1967	173164	<lv	<lv	-	-	<lv	<lv	-	<lv	<lv	<lv	<lv		<lto	lto-tv
ES	EXTREMADURA RURAL	ES1104	nonag	39689	688079	<lv	<lv			<lv	<lv		<lv	<lv	<lv	<lv		>tv	>tv
ES	A CORUÑA	ES1201	ag	8	243785	<lv	<lv	-	-	<lv	lv-mot	-	<lv	<lv				<lto	<lto

CC	zone name	zone code	type	area	pop	SO2-1h	SO2-d	SO2-yr	SO2-W	NO2-h	NO2-y	NOx-y	PM10-d	PM10-y	Lead	Benz	CO	O3-H	O3-V
ES	FERROL	ES1202	ag	6	83048	<lv	<lv			<lv	lv-mot							<lto	<lto
ES	SANTIAGO	ES1203	ag	4	93672	<lv	<lv	-	-	<lv	>mot	-						<lto	<lto
ES	LUGO	ES1204	ag	5	85174	<lv	<lv	-	-	<lv	<lv	-						lto-tv	<lto
ES	OURENSE	ES1205	ag	6	107060	<lv	<lv	-	-	<lv	<lv	-						<lto	<lto
ES	PONTEVEDRA	ES1206	ag	4	74287	<lv	<lv	-	-	<lv	<lv	-						<lto	<lto
ES	VIGO	ES1207	ag	6	286774	<lv	<lv	-	-	<lv	lv-mot	-	<lv	<lv				lto-tv	lto-tv
ES	A (FERROLTERRA-ORTEGAL)	ES1208	nonag	999	102388	<lv	<lv	-	-	<lv	<lv	-	<lv	<lv				lto-tv	<lto
ES	C (TERRA CHÁ)	ES1210	nonag	10023	310676	<lv	<lv	<lv	<lv	<lv	<lv	<lv	<lv	<lv				lto-tv	lto-tv
ES	D (VALDEORRAS)	ES1211	nonag	840	26526			-	-			-	<lv	<lv					
ES	E (A LÍMIA-MIÑO)	ES1212	nonag	7458	323236			-	-			-							
ES	F (SUR DAS RÍAS BAIXAS)	ES1213	nonag	1892	363855	<lv	<lv	-	-			-	<lv	<lv				lto-tv	<lto
ES	G (FRANJA FISTERRA-SANTIAGO)	ES1214	nonag	3880	327250			-	-			-	<lv	<lv					
ES	H (A MARIÑA)	ES1215	nonag	172	16681	<lv	<lv	-	-			-	<lv	<lv					
ES	B2 (FRANJA ÓRDES-EUME II)	ES1216	nonag	4137	276146	<lv	<lv	<lv	<lv	<lv	<lv	<lv	<lv	<lv				lto-tv	lto-tv
ES	I (ARTEIXO)	ES1217	nonag	94	23175	<lv	<lv	-	-	<lv	<lv	-	<lv	<lv					
ES	MADRID	ES1301	ag	604	2957058	<lv	<lv	-	-	>mot	>mot	-	>lv	<lv	<lv	<lv	<lv	lto-tv	lto-tv
ES	CORREDOR DEL HENARES	ES1308	ag	957	843380	<lv	<lv	-	-	>mot	>mot	-	>lv	>lv	<lv	<lv	<lv	>tv	>tv
ES	URBANA SUR	ES1309	ag	1414	1314187	<lv	<lv	-	-	>mot	>mot	-	>lv	>lv	<lv	<lv	<lv	>tv	>tv
ES	URBANA NOROESTE	ES1310	ag	1012	586944	<lv	<lv	-	-	lv-mot	<lv	-	>lv	<lv	<lv	<lv	<lv	>tv	>tv
ES	SIERRA NORTE	ES1311	nonag	1952	92877	<lv	<lv	<lv	<lv	<lv	<lv	<lv	<lv	<lv	<lv	<lv	<lv	>tv	>tv
ES	CUENCA DEL ALBERCHE	ES1312	nonag	1182	72044	<lv	<lv	<lv	<lv	<lv	<lv	<lv	>lv	<lv	<lv	<lv	<lv	>tv	>tv
ES	CUENCA DEL TAJUÑA	ES1313	nonag	900	39794	<lv	<lv	<lv	<lv	<lv	<lv	<lv	<lv	<lv	<lv	<lv	<lv	>tv	>tv
ES	COMUNIDAD DE MURCIA NORTE	ES1401	nonag	7169	250662	<lv	<lv			<lv	<lv		<lv	<lv	<lv	<lv	<lv	<lto	<lto
ES	COMUNIDAD DE MURCIA CENTRO	ES1402	nonag	1272	236321	<lv	<lv	-	-	<lv	<lv	-	<lv	<lv	<lv	<lv	<lv	>tv	>tv
ES	COMUNIDAD DE MURCIA LITORAL	ES1403	nonag	2198	109337	<lv	<lv	-	-	<lv	<lv	-	>lv	>lv	<lv	<lv	<lv	lto-tv	>tv
ES	VALLE DE ESCOBRERAS	ES1404	nonag	60	16471	<lv	<lv	-	-	<lv	<lv	-	>lv	<lv	<lv	<lv	<lv	>tv	lto-tv
ES	MAR MENOR	ES1405	nonag	243	65461	<lv	<lv			<lv	<lv		<lv	<lv	<lv	<lv	<lv	<lto	<lto
ES	CARTAGENA	ES1406	ag	94	207286	<lv	<lv	-	-	<lv	<lv	-	>lv	>lv	<lv	<lv	<lv	lto-tv	lto-tv
ES	CIUDAD DE MURCIA	ES1407	ag	276	506579	<lv	<lv	-	-	<lv	<lv	-	<lv	<lv	<lv	<lv	<lv	lto-tv	lto-tv
ES	MONTAÑA DE LA COMUNIDAD DE	ES1501	nonag	3208	40940	<lv	<lv	-	-	<lv	<lv	-	<lv	<lv			<lv	<lto	<lto

CC	zone name	zone code	type	area	pop	SO2-1h	SO2-d	SO2-yr	SO2-W	NO2-h	NO2-y	NOx-y	PM10-d	PM10-y	Lead	Benz	CO	O3-H	O3-V	
	NAVARRA																			
ES	ZONA MEDIA DE LA COMUNIDAD DE NAVARRA	ES1502	nonag	2577	52954	<lv	<lv	-	-	<lv	<lv	-	<lv	<lv			<lv	<lto	<lto	
ES	RIBERA DE LA COMUNIDAD DE NAVARRA	ES1503	nonag	4496	178648	<lv	<lv	-	-	<lv	<lv	-	<lv	<lv			<lv	>tv	>tv	
ES	COMARCA DE PAMPLONA	ES1504	ag	116	270515	<lv	<lv	-	-	<lv	<lv	-	>lv	<lv	<lv	<lv	<lv	lto-tv	lto-tv	
ES	ENCARTACIONES - ALTO NERVION	ES1601	nonag	969	70264	<lv	<lv	-	-	<lv	<lv	-	>lv	<lv			<lv	lto-tv	lto-tv	
ES	BAJO NERVION	ES1602	ag	378	880095	<lv	<lv	-	-	<lv	lv-mot	-	>lv	<lv			<lv	lto-tv	lto-tv	
ES	KOSTALDEA	ES1603	nonag	992	178703	<lv	<lv	-	-	<lv	<lv	-	<lv	<lv			<lv	lto-tv	lto-tv	
ES	DONOSTIALDEA	ES1604	ag	348	373767	<lv	<lv	-	-	<lv	<lv	-	>lv	<lv			<lv	lto-tv	<lto	
ES	ALTO IBAIZABAL - ALTO DEBA	ES1605	nonag	943	195710	<lv	<lv	-	-	<lv	<lv	-	>lv	<lv			<lv	lto-tv	<lto	
ES	GOIHERRI	ES1606	nonag	918	147149	<lv	<lv	-	-	<lv	<lv	-	>lv	<lv			<lv	lto-tv	lto-tv	
ES	LLANADA ALAVESA	ES1607	nonag	1306	237958	<lv	<lv	-	-	<lv	<lv	-	<lv	<lv			<lv	lto-tv	lto-tv	
ES	PAIS VASCO RIBERA	ES1608	nonag	1377	17542	<lv	<lv	-	-	<lv	<lv	-	<lv	<lv			<lv	>tv	>tv	
ES	LOGROÑO	ES1704	ag	20	152444	<lv	<lv	-	-	<lv	<lv	-	<lv	<lv	<lv	<lv	<lv	lto-tv	lto-tv	
ES	LA RIOJA	ES1705	nonag	5022	156524	<lv	<lv	-	-	<lv	<lv	-	<lv	<lv	<lv		<lv	>tv	lto-tv	
FI	Uudenmaan ympäristökeskus poislukien pääkaupunkiseutu	FI0001	nonag	8829	476108	<lv	<lv	-	-	<lv	<lv	-	<lv	<lv	<lv	-	<lv	-	-	
FI	Lounais-Suomen ympäristökeskus	FI0002	nonag	19322	687666	<lv	<lv	-	-	<lv	<lv	-	<lv	<lv	<lv	-	<lv	-	-	
FI	Hämeen ympäristökeskus	FI0003	nonag	11963	371510	<lv	<lv	-	-	<lv	<lv	-	<lv	<lv	<lv	-	<lv	-	-	
FI	Pirkanmaan ympäristökeskus	FI0004	nonag	14469	476631	<lv	<lv	-	-	<lv	<lv	-	<lv	<lv	<lv	-	<lv	-	-	
FI	Kaakkois-Suomen ympäristökeskus	FI0005	nonag	12831	318280	<lv	<lv	-	-	<lv	<lv	-	<lv	<lv	<lv	-	<lv	-	-	
FI	Etelä-Savon ympäristökeskus	FI0006	nonag	18768	157862	<lv	<lv	-	-	<lv	<lv	-	<lv	<lv	<lv	-	<lv	-	-	
FI	Pohjois-Savon ympäristökeskus	FI0007	nonag	20367	248872	<lv	<lv	-	-	<lv	<lv	-	<lv	<lv	<lv	-	<lv	-	-	
FI	Pohjois-Karjalan ympäristökeskus	FI0008	nonag	21584	166744	<lv	<lv	-	-	<lv	<lv	-	<lv	<lv	<lv	-	<lv	-	-	
FI	Keski-Suomen ympäristökeskus	FI0009	nonag	19950	270701	<lv	<lv	-	-	<lv	<lv	-	<lv	<lv	<lv	-	<lv	-	-	
FI	Länsi-Suomen ympäristökeskus	FI0010	nonag	27406	439766	<lv	<lv	-	-	<lv	<lv	-	<lv	<lv	<lv	-	<lv	-	-	
FI	Pohjois-Pohjanmaan ympäristökeskus	FI0011	nonag	37144	383411	<lv	<lv	-	-	<lv	<lv	-	<lv	<lv	<lv	-	<lv	-	-	
FI	Kainuun ympäristökeskus	FI0012	nonag	24453	83779	<lv	<lv	-	-	<lv	<lv	-	<lv	<lv	<lv	-	<lv	-	-	

CC	zone name	zone code	type	area	pop	SO2-1h	SO2-d	SO2-yr	SO2-W	NO2-h	NO2-y	NOx-y	PM10-d	PM10-y	Lead	Benz	CO	O3-H	O3-V	
FI	Lapin ympäristökeskus	FI0013	nonag	98984	184390	<lv	<lv	-	-	<lv	<lv	-	<lv	<lv	<lv	-	<lv	-	-	
FI	Pääkaupunkiseutu (YTV-alue)	FI0014	ag	766	1007611	<lv	<lv	-	-	<lv	lv-mot	-	<lv	<lv	<lv	<lv	<lv	lto-tv	<lto	
FI	Koko Suomi	FI0015	nonag	336837	5273331	-	-	<lv	<lv	-	-	<lv	-	-	-	-	-	-	-	
FI	Etelä-Suomi poislukien pääkaupunkiseutu	FI0016	nonag	133539	3198524	-	-	-	-	-	-	-	-	-	-	<lv	-	-	-	
FI	Pohjois-Suomi	FI0017	nonag	202532	1067196	-	-	-	-	-	-	-	-	-	-	<lv	-	-	-	
FI	Muu Suomi poislukien pääkaupunkiseutu	FI0018	nonag	336072	4265720	-	-	-	-	-	-	-	-	-	-	-	-	lto-tv	<lto	
FR	Unité urbaine de Metz	FR01A00001	ag	356	318333	<lv	<lv			<lv	<lv		<lv	<lv	<lv	<lv	<lv	<lv	>tv	>tv
FR	Zone industrielle sidérurgique Lorraine	FR01N00002	nonag	156	137031	<lv	<lv			<lv	<lv		>lv	<lv	<lv	<lv	<lv	<lv	>tv	>tv
FR	Zone Industrielle Fos-Berre	FR02N00001	nonag	598	292679	>lv	<lv	<lv	<lv	<lv	<lv	<lv	>lv	>lv	<lv	<lv	<lv	<lv	>tv	>tv
FR	Agglomération de Marseille	FR03A00001	ag	1046	1214452	<lv	<lv	<lv	<lv	lv-mot	>mot	<lv	>lv	>lv	<lv	<lv	<lv	<lv	>tv	>tv
FR	Agglomération de Toulon	FR03A00002	ag	724	539157	<lv	<lv	<lv	<lv	>mot	>mot	<lv	>lv	>lv	<lv	<lv	<lv	<lv	>tv	>tv
FR	Agglomération d'Avignon	FR03A00003	ag	509	269220	<lv	<lv	<lv	<lv	<lv	lv-mot	<lv	<lv	<lv	<lv	<lv	<lv	<lv	>tv	>tv
FR	Département des Bouches-du-Rhône	FR03N00004	nonag	3337	341086	<lv	<lv	<lv	<lv	<lv	<lv	<lv	>lv	<lv	<lv	<lv	<lv	<lv	>tv	>tv
FR	Département du Var	FR03N00005	nonag	5354	465999	<lv	<lv	<lv	<lv	<lv	<lv	<lv	<lv	<lv	<lv	<lv	<lv	<lv	>tv	>tv
FR	Département du Vaucluse	FR03N00006	nonag	3203	309214	<lv	<lv	<lv	<lv	<lv	<lv	<lv	<lv	<lv	<lv	<lv	<lv	<lv	>tv	>tv
FR	Agglomération de Paris	FR04A00001	ag	2739	9667332	<lv	<lv			>mot	>mot		>lv	>lv	<lv	<lv	<lv	lto-tv	lto-tv	
FR	Région Ile-de-France hors agglomération de Paris	FR04N00001	nonag	9272	1295066	<lv	<lv	<lv	<lv	<lv	<lv	<lv	<lv	<lv	<lv	<lv	<lv	<lv	>tv	lto-tv
FR	Estuaire	FR05N00003	nonag	661	308819	>lv	>lv			<lv	<lv		>lv	<lv	<lv	<lv	<lv	lto-tv		
FR	agglomération de Valenciennes	FR06A00001	ag	581	373288	<lv	<lv			<lv	lv-mot		>lv	<lv	-	<lv	<lv	lto-tv	<lto	
FR	Agglomération de Clermont-Ferrand	FR07A00001	ag	184	267987	<lv	<lv	<lv	<lv	<lv	>mot	-	<lv	<lv	<lv	<lv	<lv	>tv	>tv	
FR	Auvergne	FR07N00002	nonag	25829	1069013	<lv	<lv	<lv	<lv	<lv	<lv	<lv	<lv	<lv	<lv	<lv	<lv	<lv	>tv	>tv
FR	Montpellier	FR08A00001	ag	141	287981	<lv	<lv	-	-	<lv	>mot	-	<lv	<lv	<lv	<lv	<lv	>tv		
FR	Nîmes	FR08A00007	ag	221	148889	<lv	<lv	-	-	<lv	lv-mot	-	<lv	<lv	-	<lv	<lv	>tv		
FR	Perpignan	FR08A00008	ag	181	162678	<lv	<lv	-	-	<lv	<lv	-	<lv	<lv	<lv	<lv	<lv	>tv	>tv	
FR	Reste Région	FR08N00009	nonag	26833	1948452	<lv	<lv	<lv	<lv	<lv	<lv	<lv	<lv	<lv	-	<lv	<lv	>tv	>tv	
FR	LA Rochelle /Rochefort	FR09A00002	ag	52	192100	<lv	<lv	<lv	<lv	<lv	<lv	<lv	<lv	<lv	-	<lv	<lv	lto-tv	<lto	
FR	Poitiers/Châtellerauld	FR09A00003	ag	48	179600	<lv	<lv	<lv	<lv	<lv	<lv	<lv	<lv	<lv	-	<lv	<lv	lto-tv	<lto	
FR	Région Poitou-Charentes	FR09N00001	nonag	25710	1341300	<lv	<lv	<lv	<lv	<lv	<lv	<lv	<lv	<lv	-	<lv	<lv	lto-tv	<lto	
FR	Dunkerque PPA	FR10A00001	ag	273	212790	<lv	<lv			<lv	<lv		>lv	<lv	<lv	-	<lv	lto-tv	<lto	

CC	zone name	zone code	type	area	pop	SO2-1h	SO2-d	SO2-yr	SO2-W	NO2-h	NO2-y	NOx-y	PM10-d	PM10-y	Lead	Benz	CO	O3-H	O3-V	
FR	Lille PPA	FR11A00001	ag	425	958849	<lv	<lv			<lv	lv-mot		>lv	<lv	<lv	<lv	<lv	<lv	lto-tv	<lto
FR	Territoire Nord Pas-de-Calais	FR11N00002	nonag	10256	1725148	<lv	<lv			<lv	<lv		>lv	<lv	-	-	<lv	<lv	lto-tv	lto-tv
FR	zone PPA Toulouse	FR12A00001	ag	1139	801505	<lv	<lv	<lv	<lv	<lv	>mot	<lv	<lv	<lv	<lv	<lv	<lv	<lv	>tv	>tv
FR	Région Midi-Pyrénées hors zone PPA	FR12N00002	nonag	44210	1953495	<lv	<lv	<lv	<lv	<lv	<lv	<lv	<lv	<lv	<lv	<lv	<lv	<lv	>tv	>tv
FR	Agglomérations de Reims et Troyes	FR14A00002	ag	245	338773	<lv	<lv	<lv	<lv	<lv	<lv	<lv	<lv	<lv	<lv	<lv	<lv	<lv	lto-tv	lto-tv
FR	Région Champagne Ardenne sans Reims et Troyes	FR14N00003	nonag	25361	1000227	<lv	<lv	<lv	<lv	<lv	<lv	<lv	<lv	<lv	-	-	-	<lv	lto-tv	lto-tv
FR	Grenoble PPA	FR15A00001	ag	426	455336	<lv	<lv	<lv	<lv	<lv	>mot	<lv	>lv	>lv	<lv	<lv	<lv	<lv	>tv	>tv
FR	Zone d'agglomération de Strabourg (CUS + Hoerd)l	FR16A00001	ag	331	478000	<lv	<lv			<lv	>mot		>lv	<lv		<lv	<lv	<lv	>tv	>tv
FR	Zone d'agglomération de Mulhouse + Chalampé	FR16A00002	ag	325	251000	<lv	<lv			<lv	<lv		>lv	<lv		<lv	<lv	<lv	>tv	>tv
FR	Zone territoriale Alsace	FR16N00001	nonag	7624	1087841	<lv	<lv	<lv	<lv	<lv	<lv	>lv	>lv	<lv		<lv		<lv	>tv	>tv
FR	Franche-Comté	FR17N00002	nonag	15645	767481	<lv	<lv	-	-	<lv	<lv	-	<lv	<lv	<lv			<lv	>tv	>tv
FR	Communauté d'Agglomération du Grand Besançon	FR17N00003	nonag	200	170295			-	-	<lv	<lv	-	<lv	<lv	<lv	<lv	<lv	<lv	lto-tv	lto-tv
FR	Montbéliard / Belfort	FR17N00004	nonag	357	213224	<lv	<lv	-	-	<lv	<lv	-	<lv	<lv	<lv	<lv	-	<lv	>tv	>tv
FR	Amiens Métropole	FR18N00001	nonag	312	179901	<lv	<lv	<lv	<lv	<lv	<lv	<lv	<lv	<lv	<lv	<lv	<lv	<lv	lto-tv	<lto
FR	Picardie	FR18N00020	nonag	19131	1706544	<lv	<lv	<lv	<lv	<lv	<lv	<lv	<lv	<lv	<lv	<lv	<lv	<lv	lto-tv	lto-tv
FR	RENNES	FR19A00001	ag	558	364331	<lv	<lv	-	-	<lv	lv-mot	-	<lv	<lv	-	<lv	<lv	<lv	lto-tv	<lto
FR	BREST	FR19A00002	ag	218	213676	<lv	<lv	-	-	<lv	<lv	-	<lv	<lv	-	-	<lv	<lv	lto-tv	
FR	LORIENT-VANNES	FR19A00003	ag	986	293834	<lv	<lv	-	-	<lv	<lv	-	<lv	<lv	-	-	-	<lv	lto-tv	
FR	BRETAGNE	FR19N00004	nonag	25446	2033571	<lv	<lv	<lv	<lv	<lv	<lv		<lv	<lv	-	-	-	<lv	lto-tv	<lto
FR	Lyon PPA	FR20A00001	ag	987	1354843	<lv	<lv	<lv	<lv	>mot	>mot	<lv	>lv	>lv	<lv	<lv	<lv	<lv	>tv	>tv
FR	Reste Région Rhône Alpes	FR20N00001	nonag	41993	3893484	<lv	<lv	<lv	<lv	<lv	>mot	<lv	>lv	<lv	<lv	<lv	<lv	<lv	>tv	>tv
FR	Calvados	FR21N00001	nonag	4174	650411	<lv	<lv	<lv	<lv	<lv	<lv		<lv	<lv	<lv			<lv	lto-tv	<lto
FR	Manche	FR21N00002	nonag	5938	489500	<lv	<lv	<lv	<lv	<lv	<lv		<lv	<lv	-	-	-	<lv	lto-tv	<lto
FR	Orne	FR21N00003	nonag	6103	292337	<lv	<lv	<lv	<lv	<lv	<lv		<lv	<lv	-	-	-	<lv	lto-tv	<lto
FR	Zone urbaine de FORBACH	FR22A00003	ag	257	272000	<lv	<lv			<lv	<lv		<lv	<lv	-	<lv	<lv	<lv	>tv	>tv
FR	Zone industrielle Carling - Saint-AvoidL'Hôpital -	FR22N00001	nonag	25	26648	<lv	<lv			<lv	<lv		<lv	<lv	<lv	<lv	<lv	<lv	-	-
FR	Zone territoriale LORRAINE	FR22N00002	nonag	22675	1481800	<lv	<lv			<lv	<lv		<lv	<lv	-	-	<lv	<lv	>tv	>tv
FR	Nantes + périmètre PPA	FR23A00001	ag	1680	740000	<lv	<lv	-	-	<lv	<lv	-	<lv	<lv	<lv	<lv	<lv	<lv	lto-tv	<lto
FR	Région pays de Loire	FR23N00001	nonag	30610	2318500	<lv	<lv	-	-	<lv	<lv	<lv	<lv	<lv	<lv			<lv	>tv	lto-tv

CC	zone name	zone code	type	area	pop	SO2-1h	SO2-d	SO2-yr	SO2-W	NO2-h	NO2-y	NOx-y	PM10-d	PM10-y	Lead	Benz	CO	O3-H	O3-V
FR	Zone littorale urbanisée des Alpes Maritimes	FR24A00001	ag	795	1004292	<lv	<lv	<lv	<lv	<lv	>mot	<lv	>lv	>lv	<lv	<lv	<lv	>tv	>tv
FR	Alpes Maritimes	FR24N00002	nonag	3509	65708	<lv	<lv	<lv	<lv	<lv	<lv	<lv	<lv	<lv	<lv	<lv	<lv	>tv	>tv
FR	Alpes de Haute Provence et Hautes Alpes	FR24N00003	nonag	12706	287503	<lv	<lv	<lv	<lv	<lv	<lv	<lv	<lv	<lv	<lv	<lv	<lv	>tv	>tv
FR	Rouen	FR25A00001	ag	325	398823	<lv	>lv			<lv	>mot		>lv	<lv	<lv	<lv	<lv	lto-tv	lto-tv
FR	Haute-Normandie + Honfleur et Trouville	FR25N00001	nonag	12705	1116947	<lv	<lv			<lv	<lv		<lv	<lv	<lv	<lv	<lv	lto-tv	lto-tv
FR	Agglomération de Dijon	FR26A00001	ag	172	244466	<lv	<lv	<lv	<lv	<lv	<lv		>lv	<lv	<lv	<lv	<lv	>tv	>tv
FR	Départ Côte d'Or + Nièvre + Yonne	FR26N00002	nonag	22887	820708	<lv	<lv	<lv	<lv	<lv	<lv		<lv	<lv	-	-	-	lto-tv	
FR	ZAS Béthune-Lens-Douai	FR28A00001	ag	879	777925	<lv	<lv			<lv	<lv		>lv	<lv	<lv	-	<lv	lto-tv	lto-tv
FR	Saint Etienne PPA	FR29A00001	ag	292	354337	<lv	<lv	<lv	<lv	<lv	<lv	<lv	<lv	<lv	<lv	<lv	<lv	>tv	>tv
FR	Nancy	FR30A00001	ag	314	331363					<lv	<lv		<lv	<lv	-	<lv	<lv	lto-tv	lto-tv
FR	BORDEAUX	FR31A00001	ag	1086	772308	<lv	<lv			<lv	<lv		>lv	<lv	<lv	<lv	<lv	>tv	<lto
FR	LACQ	FR31N00002	nonag	164	19508	>lv	>lv			<lv	<lv		<lv	<lv	<lv	<lv	<lv	<lto	-
FR	AQUITAINE	FR31N00003	nonag	40059	2307184	<lv	<lv	<lv	<lv	<lv	<lv	<lv	>lv	<lv	<lv	<lv	<lv	>tv	>tv
FR	Saône et Loire	FR32N00001	nonag	8565	544893	<lv	<lv	<lv	<lv	<lv	<lv	<lv	<lv	<lv		<lv	<lv	>tv	>tv
FR	Tours	FR34A00001	ag	429	299840	<lv	<lv	<lv	<lv	<lv	<lv		<lv	<lv	<lv	<lv	<lv	lto-tv	<lto
FR	Orléans	FR34A00002	ag	335	266706	<lv	<lv	<lv	<lv	<lv	<lv		<lv	<lv	<lv	<lv	<lv	>tv	>tv
FR	Région Centre	FR34N00001	nonag	38387	1873783	<lv	<lv	<lv	<lv	<lv	<lv		<lv	<lv	-	-	<lv	>tv	lto-tv
FR	Agglomération de Limoges	FR35A00001	ag	468	191024	<lv	<lv			<lv	<lv		<lv	<lv	<lv	<lv	<lv	lto-tv	<lto
FR	Limousin hors agglomération de Limoges	FR35N00002	nonag	16474	533976	<lv	<lv			<lv	<lv		<lv	<lv	<lv	-	-	lto-tv	<lto
FR	Agglomération Pointoise	FR37A00001	ag	175	119492	<lv	<lv	-	-	<lv	<lv	-	>lv	<lv	-	-	-	lto-tv	<lto
FR	ZONE NOT DEFINED	FR37A00002				<lv	<lv	-	-	<lv	<lv	-	-	-	-	-	-	-	-
FR	Archipel Guadeloupe hors agglomération Pointoise	FR37N00001	nonag	1625	333508								-	-	-	-	-	-	-
FR	réunion	FR38N00001	nonag	2512	785200	<lv	<lv	-	-	<lv	<lv	-	<lv	<lv		<lv	<lv	<lto	<lto
FR	Conurbation foyaloise	FR39A00001	ag	189	170187	<lv	<lv	<lv	<lv	<lv	<lv	<lv	>lv	<lv	-	<lv	<lv	<lto	<lto
FR	Département Martinique	FR39N00001	nonag	939	230813	<lv	<lv	<lv	<lv						-	-	-		
FR	Commune Urbaine - Agglomération multicommunale de Cayenne - Ville Centre Cayenne	FR40A00001	ag	29	50594	<lv	<lv	<lv		<lv	<lv	<lv	>lv	<lv	-	-	-	<lto	<lto
FR	Commune Urbaine - Ville Isolée Kourou	FR40A00002	ag	2297	19107			-	-			-			-	-	-		
FR	Commune Urbaine - Ville Isolée Sinnamary	FR40A00003	ag	1329	2783			-	-			-			-	-	-		
FR	Reste du département de la Guyane	FR40N00004	nonag	82849	157516			-	-			-			-	-	-		

CC	zone name	zone code	type	area	pop	SO2-1h	SO2-d	SO2-yr	SO2-W	NO2-h	NO2-y	NOx-y	PM10-d	PM10-y	Lead	Benz	CO	O3-H	O3-V
FR	corse	FR41N00001	nonag	8680	279000					<lv	<lv	<lv	<lv	<lv	-	-	-	>tv	lto-tv
GB	Gibraltar	UK(GIB)	nonag	7	27928	<lv	<lv	-	-	<lv	lv-mot	-	>lv	>lv	<lv	<lv	<lv	lto-tv	lto-tv
GB	Greater London Urban Area	UK0001	ag	1628	8278251	<lv	<lv	-	-	>mot	>mot	-	>lv	>lv	<lv	<lv	<lv	lto-tv	<lto
GB	West Midlands Urban Area	UK0002	ag	594	2284093	<lv	<lv	-	-	<lv	>mot	-	>lv	<lv	<lv	<lv	<lv	lto-tv	<lto
GB	Greater Manchester Urban Area	UK0003	ag	557	2244931	<lv	<lv	-	-	<lv	>mot	-	<lv	<lv	<lv	<lv	<lv	lto-tv	<lto
GB	West Yorkshire Urban Area	UK0004	ag	363	1499465	<lv	<lv	-	-	<lv	>mot	-	<lv	<lv	<lv	<lv	<lv	lto-tv	<lto
GB	Tyneside	UK0005	ag	217	879996	<lv	<lv	-	-	<lv	>mot	-	<lv	<lv	<lv	<lv	<lv	lto-tv	<lto
GB	Liverpool Urban Area	UK0006	ag	184	816216	<lv	<lv	-	-	<lv	>mot	-	<lv	<lv	<lv	<lv	<lv	lto-tv	<lto
GB	Sheffield Urban Area	UK0007	ag	165	640720	<lv	<lv	-	-	<lv	>mot	-	<lv	<lv	<lv	<lv	<lv	lto-tv	<lto
GB	Nottingham Urban Area	UK0008	ag	169	666358	<lv	<lv	-	-	<lv	>mot	-	<lv	<lv	<lv	<lv	<lv	lto-tv	<lto
GB	Bristol Urban Area	UK0009	ag	142	551066	<lv	<lv	-	-	<lv	>mot	-	<lv	<lv	<lv	<lv	<lv	lto-tv	<lto
GB	Brighton/Worthing/Littlehampton	UK0010	ag	97	461181	<lv	<lv	-	-	<lv	>mot	-	>lv	<lv	<lv	<lv	<lv	lto-tv	<lto
GB	Leicester Urban Area	UK0011	ag	102	441213	<lv	<lv	-	-	<lv	>mot	-	<lv	<lv	<lv	<lv	<lv	lto-tv	<lto
GB	Portsmouth Urban Area	UK0012	ag	91	442252	<lv	<lv	-	-	<lv	>mot	-	<lv	<lv	<lv	<lv	<lv	lto-tv	<lto
GB	Teesside Urban Area	UK0013	ag	111	365323	<lv	<lv	-	-	<lv	>mot	-	<lv	<lv	<lv	<lv	<lv	lto-tv	<lto
GB	The Potteries	UK0014	ag	91	362403	<lv	<lv	-	-	<lv	>mot	-	<lv	<lv	<lv	<lv	<lv	lto-tv	<lto
GB	Bournemouth Urban Area	UK0015	ag	113	383713	<lv	<lv	-	-	<lv	>mot	-	<lv	<lv	<lv	<lv	<lv	lto-tv	<lto
GB	Reading/Wokingham Urban Area	UK0016	ag	97	369804	<lv	<lv	-	-	<lv	>mot	-	<lv	<lv	<lv	<lv	<lv	lto-tv	<lto
GB	Coventry/Bedworth	UK0017	ag	76	336452	<lv	<lv	-	-	<lv	>mot	-	<lv	<lv	<lv	<lv	<lv	lto-tv	<lto
GB	Kingston upon Hull	UK0018	ag	80	301416	<lv	<lv	-	-	<lv	>mot	-	<lv	<lv	<lv	<lv	<lv	lto-tv	<lto
GB	Southampton Urban Area	UK0019	ag	77	304400	<lv	<lv	-	-	<lv	>mot	-	>lv	<lv	<lv	<lv	<lv	lto-tv	<lto
GB	Birkenhead Urban Area	UK0020	ag	88	319675	<lv	<lv	-	-	<lv	>mot	-	<lv	<lv	<lv	<lv	<lv	lto-tv	<lto
GB	Southend Urban Area	UK0021	ag	64	269415	<lv	<lv	-	-	<lv	>mot	-	<lv	<lv	<lv	<lv	<lv	lto-tv	<lto
GB	Blackpool Urban Area	UK0022	ag	63	261088	<lv	<lv	-	-	<lv	<lv	-	<lv	<lv	<lv	<lv	<lv	lto-tv	<lto
GB	Preston Urban Area	UK0023	ag	58	264601	<lv	<lv	-	-	<lv	>mot	-	<lv	<lv	<lv	<lv	<lv	lto-tv	<lto
GB	Glasgow Urban Area	UK0024	ag	366	1168270	<lv	<lv	-	-	lv-mot	>mot	-	>lv	<lv	<lv	<lv	<lv	<lto	<lto
GB	Edinburgh Urban Area	UK0025	ag	117	452194	<lv	<lv	-	-	<lv	>mot	-	<lv	<lv	<lv	<lv	<lv	lto-tv	<lto
GB	Cardiff Urban Area	UK0026	ag	72	327706	<lv	<lv	-	-	<lv	>mot	-	<lv	<lv	<lv	<lv	<lv	lto-tv	<lto
GB	Swansea Urban Area	UK0027	ag	84	270506	<lv	<lv	-	-	<lv	lv-mot	-	>lv	<lv	<lv	<lv	<lv	lto-tv	<lto
GB	Belfast Metropolitan Urban Area	UK0028	ag	193	580276	<lv	<lv	-	-	<lv	>mot	-	<lv	<lv	<lv	<lv	<lv	<lto	<lto
GB	Eastern	UK0029	nonag	19113	4850132	<lv	<lv	<lv	<lv	<lv	>mot	<lv	<lv	<lv	<lv	<lv	<lv	lto-tv	lto-tv
GB	South West	UK0030	nonag	23506	3980991	<lv	<lv	<lv	<lv	<lv	>mot	<lv	<lv	<lv	<lv	<lv	<lv	lto-tv	<lto
GB	South East	UK0031	nonag	18645	6016677	<lv	<lv	<lv	<lv	<lv	>mot	<lv	<lv	<lv	<lv	<lv	<lv	lto-tv	lto-tv

CC	zone name	zone code	type	area	pop	SO2-1h	SO2-d	SO2-yr	SO2-W	NO2-h	NO2-y	NOx-y	PM10-d	PM10-y	Lead	Benz	CO	O3-H	O3-V
GB	East Midlands	UK0032	nonag	15491	3084598	<lv	<lv	<lv	<lv	<lv	>mot	<lv	<lv	<lv	<lv	<lv	<lv	lto-tv	lto-tv
GB	North West & Merseyside	UK0033	nonag	13149	2826622	<lv	<lv	<lv	<lv	<lv	>mot	<lv	<lv	<lv	<lv	<lv	<lv	lto-tv	<lto
GB	Yorkshire & Humberside	UK0034	nonag	14787	2514947	<lv	<lv	<lv	<lv	<lv	>mot	<lv	<lv	<lv	<lv	<lv	<lv	lto-tv	<lto
GB	West Midlands	UK0035	nonag	12192	2271650	<lv	<lv	<lv	<lv	<lv	>mot	<lv	<lv	<lv	<lv	<lv	<lv	lto-tv	<lto
GB	North East	UK0036	nonag	8282	1269803	<lv	<lv	<lv	<lv	<lv	>mot	<lv	<lv	<lv	<lv	<lv	<lv	lto-tv	<lto
GB	Central Scotland	UK0037	nonag	9305	1813314	<lv	<lv	<lv	<lv	<lv	>mot	<lv	<lv	<lv	<lv	<lv	<lv	lto-tv	<lto
GB	North East Scotland	UK0038	nonag	18587	1001499	<lv	<lv	<lv	<lv	<lv	>mot	<lv	<lv	<lv	<lv	<lv	<lv	lto-tv	<lto
GB	Highland	UK0039	nonag	38269	380062	<lv	<lv	<lv	<lv	<lv	lv-mot	<lv	<lv	<lv	<lv	<lv	<lv	lto-tv	<lto
GB	Scottish Borders	UK0040	nonag	11145	254690	<lv	<lv	<lv	<lv	<lv	<lv	<lv	<lv	<lv	<lv	<lv	<lv	lto-tv	<lto
GB	South Wales	UK0041	nonag	12221	1578773	<lv	<lv	<lv	<lv	<lv	>mot	<lv	<lv	<lv	<lv	<lv	<lv	lto-tv	<lto
GB	North Wales	UK0042	nonag	8368	720022	<lv	<lv	<lv	<lv	<lv	>mot	<lv	<lv	<lv	<lv	<lv	<lv	lto-tv	<lto
GB	Northern Ireland	UK0043	nonag	13579	1104991	<lv	<lv	<lv	<lv	<lv	>mot	<lv	<lv	<lv	<lv	<lv	<lv	lto-tv	<lto
GR	Βόρεια Ελλάδα	EL0001	nonag	60203	3312018	<lv	<lv	<lv	<lv	<lv	<lv	<lv	>lv	>lv	<lv	<lv	<lv	lto-tv	>tv
GR	Νότια Ελλάδα	EL0002	nonag	69747	3306302	<lv	<lv	<lv	<lv	<lv	>mot	<lv	>lv	>lv	<lv	<lv	<lv	>tv	>tv
GR	Οικισμός Αθήνα	EL0003	ag	1948	3551370	<lv	<lv			>mot	>mot		>lv	>lv	<lv	lv-mot	<lv	>tv	>tv
GR	Οικισμός Θεσσαλονίκη	EL0004	ag	129	794330	<lv	<lv			<lv	>mot		>lv	>lv	<lv	<lv	<lv	lto-tv	>tv
HU	Budapest region	HU0001	ag	2401	2436826	<lv	<lv	-	-	<lv	>mot	-	>lv	>lv	<lv	<lv	<lv	>tv	
HU	Győr-Mosonmagyaróvár	HU0002	nonag	629	185205	<lv	<lv	-	-	<lv	<lv	-	>lv	<lv	<lv	<lv	<lv	lto-tv	
HU	Komárom-Tatabánya-Esztergom	HU0003	nonag	735	224269	<lv	<lv	-	-	<lv	<lv	-	>lv	<lv	<lv	<lv	<lv	>tv	
HU	Székesfehérvár-Veszprém	HU0004	nonag	607	217068	<lv	<lv	-	-	<lv	<lv	-	<lv	<lv	<lv	<lv	<lv	lto-tv	
HU	Dunaújváros region	HU0005	nonag	228	63151	<lv	<lv	-	-	<lv	<lv	-	<lv	<lv	<lv	<lv	<lv	>tv	
HU	Pécs region	HU0006	nonag	333	196104	<lv	<lv	-	-	<lv	>mot	-	<lv	<lv	<lv	<lv	<lv	lto-tv	
HU	Visonta region	HU0007	nonag	318	50308	<lv	<lv	-	-	<lv	<lv	-	<lv		<lv	<lv	<lv	lto-tv	
HU	Sajó valley	HU0008	nonag	1106	353182	<lv	<lv	-	-	<lv	<lv	-	>lv	>lv	<lv	<lv	<lv	>tv	
HU	Debrecen region	HU0009	nonag	462	204124	<lv	<lv	-	-	<lv	<lv	-	<lv	<lv	<lv	<lv	<lv	>tv	
HU	Other areas of the country, except the allotted cities	HU0010	nonag	84004	5173863	<lv	<lv	-	-	<lv	<lv	-	<lv	<lv	<lv	<lv	<lv	>tv	
HU	Allotted cities	HU0011	nonag	2206	962058	<lv	<lv	-	-	<lv	<lv	-	>lv	>lv	<lv	<lv	<lv	>tv	
IE	Zone A	IE0001	ag	485	1045769	<lv	<lv	-	-	<lv	<lv	-	<lv	<lv	<lv	<lv	<lv	<lto	
IE	Zone B	IE0002	nonag	185	190384	<lv	<lv	-	-	<lv	<lv	-	<lv	<lv	<lv	<lv	<lv	<lto	
IE	Zone C	IE0003	nonag	222	496476	<lv	<lv	-	-	<lv	<lv	-	<lv	<lv	<lv	<lv	<lv	<lto	
IE	Zone D	IE0004	nonag	69381	2502296	<lv	<lv	<lv	<lv	<lv	<lv	>lv	<lv	<lv	<lv	<lv	<lv	lto-tv	<lto
IS	Dreifbyli	IS1000	nonag	10200 0	116711	-	-	-	-	-	-	-	-	-	-	-	-	<lto	<lto
IS	Akureyri	IS1001	ag	26	17253	-	-	-	-	-	-	-	>lv	<lv	-	-	-	-	-
IS	Reykjavik	IS2000	ag	1000	196161	<lv	<lv	<lv	<lv	<lv	<lv	-	<lv	<lv		<lv	<lv	<lto	<lto

CC	zone name	zone code	type	area	pop	SO2-1h	SO2-d	SO2-yr	SO2-W	NO2-h	NO2-y	NOx-y	PM10-d	PM10-y	Lead	Benz	CO	O3-H	O3-V
IT	Torino 01	IT0101	noag	1832	659442	<lv	<lv	-	-	<lv	lv-mot		>lv	>lv	<lv	<lv	<lv	>tv	>tv
IT	Torino 02	IT0102	noag	4630	292614	<lv	<lv	-	-	<lv	<lv		<lv	<lv	<lv	<lv	<lv	>tv	>tv
IT	Torino agglomerato	IT0103	ag	367	1296899	<lv	<lv	-	-	>mot	>mot		>lv	>lv	<lv	<lv	<lv	>tv	>tv
IT	Vercelli 01	IT0104	noag	587	93846	<lv	<lv	-	-	<lv	<lv		>lv	>lv	<lv	<lv	<lv	>tv	>tv
IT	Vercelli 02	IT0105	noag	1496	82859	<lv	<lv	-	-	<lv	<lv		>lv	<lv	<lv	<lv	<lv	>tv	>tv
IT	Novara 01	IT0106	noag	791	299725	<lv	<lv	-	-	<lv	>mot		>lv	>lv	<lv	<lv	<lv	>tv	>tv
IT	Novara 02	IT0107	noag	549	57963	<lv	<lv	-	-	<lv	<lv		>lv	>lv	<lv	<lv	<lv	>tv	>tv
IT	Cuneo 01	IT0108	noag	1074	267822	<lv	<lv	-	-	<lv	<lv		>lv	<lv	<lv	<lv	<lv	>tv	>tv
IT	Cuneo 02	IT0109	noag	5822	305791	<lv	<lv	-	-	<lv	<lv		>lv	<lv	<lv	<lv	<lv	>tv	>tv
IT	Asti 01	IT0110	noag	709	161329	<lv	<lv	-	-	<lv	<lv		>lv	<lv	<lv	<lv	<lv	>tv	>tv
IT	Asti 02	IT0111	noag	802	53745	<lv	<lv	-	-	<lv	<lv		>lv	<lv	<lv	<lv	<lv	>tv	>tv
IT	Alessandria 01	IT0112	noag	1162	306198	<lv	<lv	-	-	<lv	>mot		>lv	>lv	<lv	<lv	<lv	>tv	>tv
IT	Alessandria 02	IT0113	noag	2400	126017	<lv	<lv	-	-	<lv	<lv		>lv	<lv	<lv	<lv	<lv	>tv	>tv
IT	Biella 01	IT0114	noag	419	137657	<lv	<lv	-	-	<lv	>mot		>lv	<lv	<lv	<lv	<lv	>tv	>tv
IT	Biella 02	IT0115	noag	495	49281	<lv	<lv	-	-	<lv	<lv		<lv	<lv	<lv	<lv	<lv	>tv	>tv
IT	Verbania 01	IT0116	noag	433	115219	<lv	<lv	-	-	<lv	<lv		<lv	<lv	<lv	<lv	<lv	>tv	>tv
IT	Verbania 02	IT0117	noag	1829	46421	<lv	<lv	-	-	<lv	<lv		<lv	<lv	<lv	<lv	<lv	>tv	>tv
IT	Zona di risanamento	IT0201	nonag	14	34403	<lv	<lv	-	-	<lv	<lv	-	>lv	<lv		<lv	<lv	>tv	>tv
IT	Zona di miglioramento e tutela	IT0202	nonag	311	84779	<lv	<lv	-	-	<lv	lv-mot	<lv	<lv	<lv	-	-	<lv	>tv	>tv
IT	Zona di mantenimento	IT0203	nonag	2936	3687	-	-	-	-	<lv	<lv	<lv	-	-	-	-	-	lto-tv	lto-tv
IT	Agglomerati urbani (A1)	IT0301	ag	3000	4711804	<lv	<lv	-	-	>mot	>mot	>lv	>lv	>lv	-	<lv	<lv	>tv	>tv
IT	Zona urbanizzata (A2)	IT0302	nonag	3287	2321577	<lv	<lv	-	-	lv-mot	>mot	-	>lv	>lv	-	<lv	<lv	>tv	>tv
IT	Zona di pianura (B)	IT0303	nonag	7491	1377780	<lv	<lv	<lv	<lv	<lv	<lv	>lv	>lv	>lv	-	<lv	<lv	>tv	>tv
IT	Zona prealpina e appenninica (C1)	IT0304	nonag	6228	866108	<lv	<lv	-	-	<lv	<lv	>lv	>lv	<lv	-	<lv	<lv	>tv	>tv
IT	zona alpina (C2)	IT0305	nonag	3864	197933	<lv	<lv	-	-	<lv	<lv	-	>lv	<lv	-	<lv	<lv	>tv	>tv
IT	Zona A	IT0401	nonag	817	259942	<lv	<lv	-	-	<lv	>mot	-	>lv	>lv	<lv	<lv	<lv	>tv	
IT	Zona B	IT0402	nonag	5390	217917	<lv	<lv	<lv	<lv	<lv	<lv	<lv	-	-	-	-	-	>tv	>tv
IT	Montagne	IT0411	nonag	6562	123343	<lv	<lv	<lv	<lv	<lv	<lv	-	<lv	<lv	<lv	<lv	<lv	-	-
IT	pendici e valli laterali	IT0412	nonag	445	47962	<lv	<lv	<lv	<lv	<lv	<lv	-	<lv	<lv	<lv	<lv	<lv	-	-
IT	valli principali	IT0413	nonag	195	69918	<lv	<lv	<lv	<lv	<lv	<lv	-	<lv	<lv	<lv	<lv	<lv	-	-
IT	città ed autostrada	IT0414	ag	198	199132	<lv	<lv	<lv	<lv	<lv	>mot	-	<lv	<lv	<lv	<lv	<lv	-	-
IT	NORD	IT0423	nonag	5915	193233	-	-	-	-	-	-	-	-	-	-	-	-	<lto	lto-tv
IT	SUD	IT0424	nonag	1485	247122	-	-	-	-	-	-	-	-	-	-	-	-	>tv	>tv
IT	rilievi	IT0433	nonag	6768		-	-	-	-	-	-	>lv	-	-	-	-	-	-	-
IT	fondovalle	IT0434	nonag	632		-	-	-	-	-	-	>lv	-	-	-	-	-	-	-

CC	zone name	zone code	type	area	pop	SO2-1h	SO2-d	SO2-yr	SO2-W	NO2-h	NO2-y	NOx-y	PM10-d	PM10-y	Lead	Benz	CO	O3-H	O3-V
IT	A	IT0501	ag	2498	1449071	<lv	<lv	<lv	<lv	<lv	>mot	>lv	>lv	>lv	<lv	<lv	<lv	>tv	>tv
IT	B	IT0502	ag	544	145015	<lv	<lv	<lv	<lv	<lv	lv-mot	>lv	<lv	<lv	<lv	<lv	<lv	>tv	>tv
IT	C1	IT0503	nonag	35	46579	<lv	<lv	<lv	<lv	<lv	<lv	-			-		<lv		
IT	C2	IT0504	nonag	104	35380	<lv	<lv	-	-	<lv	<lv	-			-		<lv		
IT	C3	IT0505	nonag	15006	3062268	<lv	<lv	-	-	<lv	<lv	-			-				
IT	Area Udinese	IT0601	nonag	56	95030	<lv	<lv	-	-	<lv	>mot	-	>lv	<lv	<lv	<lv	<lv	>tv	
IT	Zona di Risanamento - Area Napoli e Caserta	IT0601C	ag	998	2974294	-	-	-	-	>mot	>mot	-	>lv	<lv	-	<lv	<lv	>tv	
IT	Area Triestina	IT0602	nonag	84	211184	<lv	<lv	-	-	<lv	>mot	-	>lv	<lv	-	<lv	<lv	>tv	>tv
IT	Zona di Risanamento - Area salernitana	IT0602C	ag	356	429966	-	-	-	-	>mot	>mot	-	>lv	<lv	-	<lv	>lv		
IT	Area Pordenonese	IT0603	nonag	157	102110	<lv	<lv	-	-	<lv	>mot	-	>lv	<lv	<lv	<lv	<lv	>tv	>tv
IT	Zona di Risanamento - Area avellinese	IT0603C	ag	39	63711	-	-	-	-	lv-mot	>mot	-	<lv	<lv	-	<lv	<lv	-	-
IT	Area Goriziana	IT0604	nonag	41	36531	-	-	-	-	<lv	>mot	-	<lv	<lv	<lv	<lv	<lv	>tv	
IT	Zona di risanamento - Area beneventana	IT0604C	ag	130	61486	-	-	-	-	>mot	>mot	-	>lv	<lv	-	-	<lv	-	-
IT	Area Monfalconese	IT0605	nonag	21	27743	-	-	-	-	<lv	<lv	-	<lv	<lv	-	<lv	<lv	>tv	
IT	Zona di Osservazione	IT0605C	ag	1273	610346														
IT	Zona di mantenimento	IT0606	nonag	7498	735272	<lv	<lv	<lv	<lv	<lv	>mot	-	>lv	<lv	-	<lv	<lv	>tv	>tv
IT	Zona di Mantenimento	IT0606C	nonag	10794	1562128														
IT	Comune di Genova	IT0701	ag	244	610307	<lv	<lv	-	-	<lv	>mot	-	>lv	<lv	-	<lv	<lv		
IT	Aree urbane con fonti emittenti miste - Savonese -	IT0702	nonag	138	74930	<lv	<lv	-	-	<lv	<lv	-	<lv	<lv	-	<lv	<lv	-	-
IT	Aree urbane con fonti emittenti miste -La Spezia -	IT0703	nonag	100	119794	<lv	<lv	-	-	<lv	>mot	-	>lv	>lv	-	<lv	<lv	-	-
IT	Aree urbane in cui prevale la fonte traffico	IT0704	nonag	518	321561	<lv	<lv	-	-	<lv	<lv	-	<lv	<lv	-	<lv	<lv	-	-
IT	Aree urbane in cui prevale la fonte produttiva-Bormida-	IT0705	nonag	122	21327	<lv	<lv	-	-	<lv	<lv	-	>lv	<lv	-	<lv	<lv	-	-
IT	Aree urbane in cui prevale la fonte produttiva-Busalla-	IT0706	nonag	17	5943	<lv	<lv	-	-	<lv	>mot	-	<lv	<lv	-	<lv	<lv	-	-
IT	Zona di mantenimento	IT0707	nonag	4282	417921	<lv	<lv	<lv	<lv	<lv	<lv	<lv	<lv	<lv	-	<lv	<lv	-	-
IT	Zona A per l'ozono	IT0708	ag	382	685237	-	-	-	-	-	-	-	-	-	-	-	-	>tv	>tv
IT	Zona B per l'ozono	IT0709	nonag	5038	886546	-	-	-	-	-	-	-	-	-	-	-	-	>tv	>tv
IT	Zona A Provincia di Piacenza	IT0800	nonag	1325	232557	-	-	-	-	<lv	<lv	-	>lv	<lv	-	-	<lv	-	-
IT	Zona B Provincia di Piacenza	IT0801	nonag	1265	30752	-	-	-	-				-	-	-	-	-	-	-
IT	Agglomerato R1 Piacenza	IT0802	ag	734	187491	<lv	<lv	-	-	<lv	<lv	-	>lv	<lv	-	<lv	<lv	>tv	

CC	zone name	zone code	type	area	pop	SO2-1h	SO2-d	SO2-yr	SO2-W	NO2-h	NO2-y	NOx-y	PM10-d	PM10-y	Lead	Benz	CO	O3-H	O3-V
IT	Zona A Provincia di Parma	IT0810	nonag	1567	342005														
IT	Zona B Provincia di Parma	IT0811	nonag	1882	42984	-	-	-	-				-	-	-	-	-	-	-
IT	Agglomerato R2 Parma	IT0812	ag	749	242621	-	-	-	-	<lv	>mot	-	>lv	<lv	-	<lv	<lv	>tv	
IT	Zona A Provincia di Reggio Emilia	IT0820	nonag	1321	409638	-	-	-	-	<lv	lv-mot	-	-	-	-	-	<lv	-	-
IT	Zona B Provincia di Reggio Emilia	IT0821	nonag	969	43401	-	-	-	-				-	-	-	-	-	-	-
IT	Agglomerato R3 Reggio Emilia	IT0822	ag	441	208141	<lv	<lv	-	-	<lv	>mot	-	>lv	>lv	-	<lv	<lv	>tv	
IT	Agglomerato R12 Reggio Emilia	IT0823	ag	170	60118	-	-	-	-	<lv	<lv	-	>lv	<lv	-	-	-	-	-
IT	Zona A Provincia di Modena	IT0830	nonag	1474	565698	-	-	-	-	<lv	>mot	-	-	-	-	-	<lv	>tv	
IT	Zona B Provincia di Modena	IT0831	nonag	1215	62482	-	-	-	-				-	-	-	-	-	-	-
IT	Agglomerato R4 Modena	IT0832	ag	648	326494	-	-	-	-	<lv	>mot	-	>lv	>lv	-	<lv	<lv	-	-
IT	Agglomerato R5 Fiorano Modenese	IT0833	ag	194	108547	-	-	-	-	<lv	>mot	-	-	-	-	<lv	<lv	-	-
IT	Zona A Provincia di Bologna	IT0840	nonag	2311	819258														
IT	Zona B Provincia di Bologna	IT0841	nonag	1391	91334	<lv	<lv	<lv	<lv	<lv	lv-mot	-			-	-	-	-	-
IT	Agglomerato R6 Bologna	IT0842	ag	738	550630	-	-	-	-	<lv	>mot	-	>lv	>lv	<lv	<lv	<lv	>tv	
IT	Agglomerato R7 Imola	IT0843	ag	205	64021	-	-	-	-	<lv	lv-mot	-	>lv	<lv	-	-	<lv	-	-
IT	Zona A Provincia di Ferrara	IT0850	nonag	1494	245612	-	-	-	-	<lv	<lv	-	-	-	-	-	<lv	-	-
IT	Zona B Provincia di Ferrara	IT0851	nonag	1139	97092	-	-	-	-	<lv	<lv	<lv	-	-	-	-	-	>tv	>tv
IT	Agglomerato R8 Ferrara	IT0852	ag	404	130461	<lv	<lv	-	-	<lv	lv-mot	-	>lv	>lv	-	<lv	<lv	-	-
IT	Zona A Provincia di Ravenna	IT0860	nonag	1535	335212														
IT	Zona B Provincia di Ravenna	IT0861	nonag	323	15667	-	-	-	-				-	-	-	-	-	-	-
IT	Agglomerato R9 Ravenna	IT0862	ag	653	138204	-	-	-	-	<lv	>mot	-	<lv	<lv	-	<lv	<lv	>tv	
IT	Agglomerato R10 Faenza	IT0863	ag	248	61581	<lv	<lv	-	-	<lv	>mot	-	<lv	<lv	-	-	<lv	-	-
IT	Zona A Provincia di Forli-Cesena	IT0870	nonag	769	295031														

CC	zone name	zone code	type	area	pop	SO2-1h	SO2-d	SO2-yr	SO2-W	NO2-h	NO2-y	NOx-y	PM10-d	PM10-y	Lead	Benz	CO	O3-H	O3-V
IT	Zona B Provincia di Forli-Cesena	IT0871	nonag	1608	61296	-	-	-	-				-	-	-	-	-	-	-
IT	Agglomerato R11 Forli/Cesena	IT0872	ag	590	233186	<lv	<lv	-	-	<lv	<lv	-	>lv	<lv	-	<lv	<lv	>tv	
IT	Zona A Provincia di Rimini	IT0880	nonag	377	257823														
IT	Zona B Provincia di Rimini	IT0881	nonag	157	12707	-	-	-	-				-	-	-	-	-	-	-
IT	Agglomerato R13 Rimini	IT0882	ag	290	229438	<lv	<lv	-	-	<lv	>mot	-	>lv	<lv	-	<lv	<lv	>tv	
IT	Zona di mantenimento A-B	IT0901	ag	21114	2251262	<lv	<lv	-	-	<lv	<lv	-	<lv	<lv	<lv	<lv	<lv	lto-tv	>tv
IT	Zona di risanamento comunale	IT0902	nonag	541	174339	<lv	<lv	-	-	<lv	>mot	-	>lv	<lv	<lv	<lv	<lv	>tv	>tv
IT	Zona di risanamento di Pisa-Livorno	IT0903	ag	369	289074	<lv	<lv	-	-	<lv	<lv	-	>lv	<lv	<lv	<lv	<lv	>tv	>tv
IT	Zona di risanamento della Piana Lucchese	IT0904	nonag	360	135116	<lv	<lv	-	-	<lv	<lv	-	>lv	<lv	<lv	<lv	<lv	>tv	>tv
IT	Zona di risanamento dell'Area metropolitana di Firenze-Prato	IT0905	ag	607	788420	<lv	<lv	-	-	<lv	>mot	-	>lv	>lv	<lv	<lv	<lv	>tv	>tv
IT	Area metropolitana di Perugia	IT1001	nonag	416	149125	<lv	<lv	<lv	<lv	<lv	>mot	>lv	>lv	<lv	<lv	lv- mot	<lv	>tv	>tv
IT	Conca Ternana	IT1002	nonag	196	105018	<lv	<lv	<lv	<lv	<lv	>mot	<lv	>lv	<lv	<lv	<lv	<lv	>tv	>tv
IT	Comuni a media urbanizzazione con forte comparto industriale Comune di Gubbio e Spoleto	IT1003	nonag	873	65739	-	-	-	-										
IT	Comuni a media urbanizzazione su arterie importanti di traffico Comune di Foligno, Orvieto; Città di Castello	IT1004	nonag	933	107656	-	-	-	-										
IT	Zona A	IT1101	nonag	2667	1060950	<lv	<lv	<lv	<lv	<lv	>mot	-	>lv	>lv	<lv	<lv	<lv	>tv	>tv
IT	Zona B	IT1102	nonag	7027	475148	<lv	<lv	<lv	<lv	<lv	<lv	<lv	<lv	<lv	-	<lv	<lv	>tv	<lto
IT	Roma	IT1201	ag	1282	2460000	<lv	<lv	-	-	>mot	>mot	>lv	>lv	>lv	-	<lv	<lv	>tv	>tv
IT	Frosinone	IT1202	ag	47	45000	<lv	<lv	-	-	<lv	>mot	-	>lv	>lv	-	<lv	<lv	-	-
IT	Z2	IT1203	nonag	2932	1063000	<lv	<lv	-	-	<lv	>mot	-	>lv	<lv	-	<lv	<lv	-	-
IT	Z3	IT1204	nonag	6771	1076000	<lv	<lv	<lv	<lv	<lv	>mot	>lv	<lv	<lv	-	-	-	-	-
IT	Z4	IT1205	nonag	6145	333000	<lv	<lv	<lv	<lv	<lv	<lv	<lv	-	-	-	-	-	-	-
IT	Z10	IT1210	nonag	14895	2517000	-	-	-	-	-	-	-	-	-	-	-	-	>tv	>tv
IT	Metropolitana	IT1301	ag	110	188000	<lv	<lv	-	-	<lv	<lv	-	<lv	<lv	-	<lv	<lv	>tv	
IT	Rurale	IT1302	nonag	10685	1135000	-	-	-	-	<lv	<lv	-	<lv	<lv	-	-	<lv	>tv	

CC	zone name	zone code	type	area	pop	SO2-1h	SO2-d	SO2-yr	SO2-W	NO2-h	NO2-y	NOx-y	PM10-d	PM10-y	Lead	Benz	CO	O3-H	O3-V
IT	Campobasso	IT1401	nonag	4438	327000	<lv	<lv	<lv	<lv	<lv	>mot	<lv	<lv	<lv	-	<lv	<lv	>tv	
IT	A (aree urbane)	IT1601	ag	7101	1838414	<lv	<lv	<lv	<lv	<lv	>mot	<lv	>lv	<lv	-	<lv	<lv	>tv	>tv
IT	B (aree industriali)	IT1602	nonag	314	115914	<lv	<lv	<lv	<lv	<lv	<lv	>lv	<lv	<lv	-	<lv	<lv	-	-
IT	C (aree urbano-industriali)	IT1603	ag	915	387731	<lv	<lv	-	-	<lv	>mot	-	>lv	>lv	-	<lv	<lv	>tv	
IT	D (aree di mantenimento)	IT1604	nonag	10943	1626700	<lv	<lv	<lv	<lv	<lv	<lv	<lv	<lv	<lv	-	-	-	-	-
IT	E (aree con criticità locali)	IT1605	nonag	83	14728	<lv	<lv	-	-	<lv	<lv	-	>lv	<lv	-	-	<lv	-	-
IT	Area urbana di Potenza	IT1701	ag			<lv	<lv	-	-	<lv	<lv	-	<lv	<lv	-	<lv	<lv	lto-tv	
IT	Area Industriale melfese	IT1702	nonag		104979	<lv	<lv	-	-	<lv	<lv	-	<lv	<lv	-	<lv	<lv	lto-tv	
IT	Area Comune Matera	IT1703	nonag			<lv	<lv	-	-	<lv	<lv	-	<lv	<lv	-	<lv	<lv	lto-tv	
IT	zona industriale Rossano Corigliano	IT1801	nonag	345	71662	<lv	<lv	-	-	-	-	-	-	-	-	-	-	-	-
IT	zona urbana Crotone	IT1802	nonag	180	59998	-	-	-	-	<lv	<lv	-			-	-	<lv	lto-tv	
IT	zona Altomonte Firmo Saracena	IT1803	nonag	188	11881	-	-	-	-	<lv	<lv	-	<lv	<lv	-	<lv	<lv	>tv	
IT	Sicilia escluso A1→A9 e R1→R3	IT1901	nonag	21774	2826219	<lv	<lv	-	-	<lv	<lv	-	<lv	<lv			<lv	lto-tv	
IT	Palermo, Villabate, Bagheria, Monreale, Altofonte (A1)	IT19A1	ag	227.66	761852	<lv	<lv	-	-	<lv	>mot	-	>lv	>lv	<lv	lv-mot	<lv	lto-tv	
IT	Termini Imerese (A2)	IT19A2	ag	78	26290														
IT	Partinico, Isola delle Femmine, Capaci e Carini (A3)	IT19A3	ag	197	72603														
IT	Caltanissetta, San Cataldo (A4)	IT19A4	ag	493	84055	<lv	<lv	-	-	<lv	lv-mot	-	<lv	<lv		<lv	<lv	lto-tv	
IT	Agrigento, Porto Empedocle, Canicatti (A5)	IT19A5	ag	360	100435	<lv	<lv	-	-	<lv	<lv	-	>lv	>lv				lto-tv	
IT	Messina (A6)	IT19A6	ag	211	236621					<lv	<lv	-	>lv	<lv		<lv	<lv	lto-tv	
IT	Catania, Misterbianco, Motta Santa Anastasia (A7)	IT19A7	ag	252	360161	<lv	<lv	-	-	lv-mot	>mot	-	<lv	<lv		lv-mot	<lv	lto-tv	
IT	Ragusa (A8)	IT19A8	ag	442.46	68346														
IT	Trapani (A9)	IT19A9	ag	271.65	67456														
IT	Gela, Butera, Niscemi (R1)	IT19R1	ag	671	105359	<lv	<lv	-	-	<lv	lv-mot	-	<lv	<lv		<lv	<lv	lto-tv	
IT	Siracusa, Priolo, Melilli, Augusta, Floridia, Solarino (R2)	IT19R2	ag	546	206455	<lv	<lv	-	-	lv-mot	>mot	-	>lv	>lv		<lv	<lv	lto-tv	
IT	Gualtieri Sicaminò, Milazzo, Pace del Mela, San Filippo del Mela, Santa Lucia del Mela, San Pier Niceto, Condò (R3)	IT19R3	ag	185	53139	<lv	<lv	-	-										

CC	zone name	zone code	type	area	pop	SO2-1h	SO2-d	SO2-yr	SO2-W	NO2-h	NO2-y	NOx-y	PM10-d	PM10-y	Lead	Benz	CO	O3-H	O3-V
IT	Cagliari	IT2001	ag	243	291324	<lv	<lv	-	-	<lv	<lv	-	>lv	<lv	-		<lv	lto-tv	
IT	Sassari	IT2002	nonag	546	120729	<lv	<lv	-	-	<lv	<lv	-	>lv	<lv	-	-	<lv	lto-tv	
IT	Area industriale Sarroch	IT2003	nonag	68	5243	<lv	<lv	-	-	<lv	<lv	-	<lv	<lv	-	<lv	<lv	<lto	
IT	Area industriale Portoscuso	IT2004	nonag	39	5392	<lv	<lv	-	-	<lv	<lv	-	<lv	<lv	-	<lv	-	<lto	
IT	Area industriale Porto Torres	IT2005	nonag	103	21064			-	-			-	-	-	-	-	-	-	-
IT	Zona di mantenimento	IT2006	nonag	23093	1195898	<lv	<lv	-	-	<lv	<lv	-	<lv	<lv	-	-	-	lto-tv	
LT	Vilnius	LT0100	ag	401	554409	<lv	<lv	-	-	<lv	<lv	-	>lv	<lv	<lv	<lv	<lv	lto-tv	-
LT	Kaunas	LT0200	ag	157	358111	<lv	<lv	-	-	<lv	<lv	-	>lv	<lv	<lv	<lv	<lv	lto-tv	-
LT	Lietuva	LT0300	nonag	64742	2472359	<lv	<lv	<lv	<lv	<lv	<lv	-	<lv	<lv	<lv	<lv	<lv	lto-tv	lto-tv
LV	Riga	LV0001	ag	307	719928	<lv	<lv	<lv	<lv	<lv	>mot	<lv	>lv	>lv	<lv	<lv	<lv	<lto	
LV	Latvia	LV0002	nonag	64589	1556172	<lv	<lv	<lv	<lv	<lv	<lv	<lv	>lv	<lv	<lv	<lv	-	<lto	<lto
MT	Maltese Agglomeration	MT0001	ag	39	274482	<lv	<lv	-	-	<lv	>mot	-	>lv	>lv	<lv	<lv	<lv	<lto	-
MT	Maltese Zone	MT0002	nonag	276	116933	<lv	<lv	<lv	<lv	<lv	<lv	<lv	<lv	<lv	-	<lv	-	>tv	>tv
NL	Noord	NL0100	nonag	13486	2804377	<lv	<lv	<lv	<lv	<lv	lv-mot	<lv	>lv	<lv	<lv	<lv	<lv	lto-tv	lto-tv
NL	Midden	NL0200	nonag	10371	4834110	<lv	<lv	-	-	<lv	>mot	-	>lv	<lv	<lv	<lv	<lv	lto-tv	lto-tv
NL	Amsterdam/Haarlem	NL0210	ag	830	1530779	<lv	<lv	-	-	<lv	>mot	-	>lv	<lv		<lv	<lv	lto-tv	<lto
NL	Utrecht	NL0220	ag	236	447817	<lv	<lv	-	-	<lv	>mot	-	>lv	<lv		<lv	<lv	lto-tv	-
NL	Den Haag/Leiden	NL0230	ag	421	1075402	<lv	<lv	-	-	<lv	>mot	-	>lv	<lv		<lv	<lv	lto-tv	lto-tv
NL	Rotterdam/Dordrecht	NL0240	ag	586	1280286	<lv	<lv	-	-	<lv	>mot	-	>lv	>lv	<lv	<lv	<lv	lto-tv	lto-tv
NL	Zuid	NL0300	nonag	8571	3258128	<lv	<lv	-	-	<lv	>mot	-	>lv	>lv	<lv	<lv	<lv	>tv	lto-tv
NL	Eindhoven	NL0310	ag	276	425247	<lv	<lv	-	-	<lv	>mot	-	>lv	<lv		<lv	<lv	lto-tv	-
NL	Heerlen/Kerkrade	NL0320	ag	174	241982	<lv	<lv	-	-	<lv	lv-mot	-	>lv	<lv		<lv	<lv	>tv	lto-tv
NO	Stor-Oslo	NO1	ag	1659	871000	-	-	-	-	lv-mot	>mot	-	<lv	>lv	-	<lv	<lv	>tv	
NO	Bergen	NO2	ag	465	229000	-	-	-	-	<lv	>mot	-	<lv	<lv	-	<lv			
NO	Trondheim	NO3	ag	514	160000	-	-	-	-	<lv	>mot	-	>lv	<lv	-	<lv		-	-
NO	Øst- and Sørlandet	NO4	nonag	10942 5	1594000	<lv	<lv			lv-mot	>mot	-	<lv	<lv	-	<lv		>tv	
NO	Vestlandet	NO5	nonag	42929	687000	-	-	-	-	<lv	lv-mot	-	<lv	<lv	-			>tv	
NO	Midt-Norge and Nordland	NO6	nonag	94281	712000					<lv	<lv	-	>lv	<lv	-	<lv	-	>tv	
NO	Troms, Finnmark and Svalbard	NO7	nonag	13588 2	225000	>lv	>lv			<lv	lv-mot	-	>lv	<lv	-		-	>tv	
PL	strefa dolnośląska	PL.02.00.b.28	noag	19654	2245808	-	-	-	-	-	-	-	-	-	-	-	-	>tv	>tv
PL	aglomeracja wroclawska	PL.02.01.a.01	ag	293	633950	<lv	<lv	-	-	<lv	<lv	-	>lv	<lv	<lv	<lv	<lv	>tv	-
PL	miasto Jelenia Góra	PL.02.02.m.01	noag	109	86220	<lv	<lv	-	-	<lv	<lv	-	>lv	>lv	<lv	<lv	<lv	-	-
PL	miasto Legnica	PL.02.03.m.01	noag	56	105025	<lv	<lv	-	-	<lv	<lv	-	>lv	<lv	<lv	<lv	<lv	-	-

CC	zone name	zone code	type	area	pop	SO2-1h	SO2-d	SO2-yr	SO2-W	NO2-h	NO2-y	NOx-y	PM10-d	PM10-y	Lead	Benz	CO	O3-H	O3-V
PL	powiat glogowski	PL.02.04.p.01	noag	443	87599	<lv	<lv	<lv	<lv	<lv	<lv	<lv	>lv	<lv	<lv	<lv	<lv	-	-
PL	powiat kłodzki	PL.02.05.p.01	noag	1642	165584	<lv	<lv	<lv	<lv	<lv	<lv	<lv	>lv	>lv	<lv	<lv	<lv	-	-
PL	powiat olawski	PL.02.06.p.01	noag	524	71290	<lv	<lv	<lv	<lv	<lv	<lv	<lv	<lv	<lv	<lv	<lv	<lv	-	-
PL	powiat wałbrzyski	PL.02.07.p.01	noag	515	182921	<lv	<lv	<lv	<lv	<lv	<lv	<lv	<lv	<lv	<lv	<lv	<lv	-	-
PL	powiat zgorzelecki	PL.02.08.p.01	noag	839	93856	<lv	<lv	<lv	<lv	<lv	<lv	<lv	>lv	<lv	<lv	<lv	<lv	-	-
PL	strefa bolesławiecko-lwówecka	PL.02.09.z.03	noag	2441	193044	<lv	<lv	<lv	<lv	<lv	<lv	<lv	<lv	<lv	<lv	<lv	<lv	-	-
PL	strefa dzierzoniowsko-świdnicka	PL.02.10.z.02	noag	1220	264375	<lv	<lv	<lv	<lv	<lv	<lv	<lv	>lv	<lv	<lv	<lv	<lv	-	-
PL	strefa jaworsko-złotoryjska	PL.02.11.z.03	noag	1902	150548	<lv	<lv	<lv	<lv	<lv	<lv	<lv	<lv	<lv	<lv	<lv	<lv	-	-
PL	strefa jeleniogórsko-kamiennogórska	PL.02.12.z.02	noag	1023	109815	<lv	<lv	<lv	<lv	<lv	<lv	<lv	<lv	<lv	<lv	<lv	<lv	-	-
PL	strefa lubińsko-polkowicka	PL.02.13.z.02	noag	1491	166534	<lv	<lv	<lv	<lv	<lv	<lv	<lv	<lv	<lv	<lv	<lv	<lv	-	-
PL	strefa oleśnicko-trzebnicka	PL.02.14.z.04	noag	3527	254434	<lv	<lv	<lv	<lv	<lv	<lv	<lv	<lv	<lv	<lv	<lv	<lv	-	-
PL	strefa strzelińsko-ząbkowicka	PL.02.15.z.02	noag	1424	113084	<lv	<lv	<lv	<lv	<lv	<lv	<lv	<lv	<lv	<lv	<lv	<lv	-	-
PL	strefa średzko-wrocławska	PL.02.16.z.03	noag	2497	201479	<lv	<lv	<lv	<lv	<lv	<lv	<lv	<lv	<lv	<lv	<lv	<lv	-	-
PL	strefa kujawsko-pomorska	PL.04.00.b.22	noag	17797	1703967	-	-	-	-	-	-	-	-	-	-	-	-	lto-tv	lto-tv
PL	aglomeracja bydgoska	PL.04.01.a.01	ag	175	361989	<lv	<lv	-	-	<lv	<lv	-	>lv	<lv	<lv	>mot	<lv	lto-tv	-
PL	miasto Grudziądz	PL.04.02.m.01	noag	58	98917	<lv	<lv	-	-	<lv	<lv	-	<lv	<lv	<lv	<lv	<lv	-	-
PL	miasto Toruń	PL.04.03.m.01	noag	116	206710	<lv	<lv	-	-	<lv	<lv	-	<lv	<lv	<lv	<lv	<lv	-	-
PL	miasto Włocławek	PL.04.04.m.01	noag	84	118733	<lv	<lv	-	-	>mot	>mot	-	>lv	>lv	<lv	<lv	<lv	-	-
PL	powiat bydgoski	PL.04.05.p.01	noag	1396	98724	<lv	<lv	<lv	<lv	<lv	<lv	<lv	<lv	<lv	<lv	<lv	<lv	-	-
PL	powiat inowrocławski	PL.04.06.p.01	noag	1225	164647	<lv	<lv	<lv	<lv	<lv	<lv	<lv	<lv	<lv	<lv	<lv	<lv	-	-
PL	powiat lipnowski	PL.04.07.p.01	noag	1016	66071	<lv	<lv	<lv	<lv	<lv	<lv	<lv	<lv	<lv	<lv	<lv	<lv	-	-
PL	powiat nakielski	PL.04.08.p.01	noag	1120	85006	<lv	<lv	<lv	<lv	<lv	<lv	<lv	>lv	<lv	<lv	<lv	<lv	-	-
PL	powiat toruński	PL.04.09.p.01	noag	1230	91521	<lv	<lv	<lv	<lv	<lv	<lv	<lv	<lv	<lv	<lv	<lv	<lv	-	-
PL	strefa brodnicko-rypińska	PL.04.10.z.02	noag	1626	119251	<lv	<lv	<lv	<lv	<lv	<lv	<lv	<lv	<lv	<lv	<lv	<lv	-	-
PL	strefa chełmińsko-świecka	PL.04.11.z.03	noag	2729	187053	<lv	<lv	<lv	<lv	<lv	<lv	<lv	>lv	<lv	<lv	<lv	<lv	-	-
PL	strefa dobrzyńsko-wąbrzeska	PL.04.12.z.02	noag	1115	79896	<lv	<lv	<lv	<lv	<lv	<lv	<lv	<lv	<lv	<lv	<lv	<lv	-	-
PL	strefa mogileńsko-znińska	PL.04.13.z.02	noag	1660	116514	<lv	<lv	<lv	<lv	<lv	<lv	<lv	<lv	<lv	<lv	<lv	<lv	-	-
PL	strefa sępoleńsko-tucholska	PL.04.14.z.02	noag	1867	88378	<lv	<lv	<lv	<lv	<lv	<lv	<lv	<lv	<lv	<lv	<lv	<lv	-	-
PL	strefa włocławsko-aleksandrowska	PL.04.15.z.03	noag	2555	182546	<lv	<lv	<lv	<lv	<lv	<lv	<lv	<lv	<lv	<lv	<lv	<lv	-	-
PL	strefa lubelska	PL.06.00.b.23	noag	24975	1815099	-	-	-	-	-	-	-	-	-	-	-	-	lto-tv	lto-tv
PL	aglomeracja lubelska	PL.06.01.a.01	ag	148	352689	<lv	<lv	-	-	<lv	<lv	-	>lv	<lv	<lv	<lv	<lv	lto-tv	-
PL	miasto Biała Podlaska	PL.06.02.m.01	noag	49	58034	<lv	<lv	-	-	<lv	<lv	-	>lv	<lv	<lv	<lv	<lv	-	-
PL	miasto Chełm	PL.06.03.m.01	noag	35	67712	<lv	<lv	-	-	<lv	<lv	-	>lv	<lv	<lv	<lv	<lv	-	-

CC	zone name	zone code	type	area	pop	SO2-1h	SO2-d	SO2-yr	SO2-W	NO2-h	NO2-y	NOx-y	PM10-d	PM10-y	Lead	Benz	CO	O3-H	O3-V
PL	miasto Zamość	PL.06.04.m.01	noag	30	66283	<lv	<lv	-	-	<lv	<lv	-	>lv	<lv	<lv	<lv	<lv	-	-
PL	strefa bialsko-radzyńska	PL.06.05.z.03	noag	5114	282543	<lv	<lv	<lv	<lv	<lv	<lv	<lv	<lv	<lv	<lv	<lv	<lv	-	-
PL	strefa biłgorajsko-zamojska	PL.06.06.z.05	noag	7184	416956	<lv	<lv	<lv	<lv	<lv	<lv	<lv	<lv	<lv	<lv	<lv	<lv	-	-
PL	strefa chełmsko-krasnostawska	PL.06.07.z.02	noag	2917	148112	<lv	<lv	<lv	<lv	<lv	<lv	<lv	<lv	<lv	<lv	<lv	<lv	-	-
PL	strefa lubelsko-pulawska	PL.06.08.z.06	noag	5512	551837	<lv	<lv	<lv	<lv	<lv	<lv	<lv	<lv	<lv	<lv	<lv	<lv	-	-
PL	strefa łączynsko-wlodawska	PL.06.09.z.04	noag	4133	223622	<lv	<lv	<lv	<lv	<lv	<lv	<lv	>lv	<lv	<lv	<lv	<lv	-	-
PL	województwo lubuskie	PL.08.00.c.14	noag	13988	1008520	-	-	-	-	-	-	-	-	-	-	-	-	>tv	>tv
PL	miasto Gorzów Wlkp.	PL.08.01.m.01	noag	86	125504	<lv	<lv	-	-	<lv	<lv	-	>lv	<lv	<lv	<lv	<lv	-	-
PL	miasto Zielona Góra	PL.08.02.m.01	noag	58	118115	<lv	<lv	-	-	<lv	<lv	-	<lv	<lv	<lv	<lv	<lv	-	-
PL	strefa gorzowsko-strzelecka	PL.08.03.z.02	noag	2462	115855	<lv	<lv	<lv	<lv	<lv	<lv	<lv	<lv	<lv	<lv	<lv	<lv	-	-
PL	strefa nowosolsko-wschowska	PL.08.04.z.02	noag	1395	125634	<lv	<lv	<lv	<lv	<lv	<lv	<lv	<lv	<lv	<lv	<lv	<lv	-	-
PL	strefa słubicko-sulcińska	PL.08.05.z.03	noag	3565	140263	<lv	<lv	<lv	<lv	<lv	<lv	<lv	<lv	<lv	<lv	<lv	<lv	-	-
PL	strefa zielonogórsko-świebodzińska	PL.08.06.z.03	noag	3897	202215	<lv	<lv	<lv	<lv	<lv	<lv	<lv	<lv	<lv	<lv	<lv	<lv	-	-
PL	strefa żarsko-żagańska	PL.08.07.z.02	noag	2525	180934	<lv	<lv	<lv	<lv	<lv	<lv	<lv	<lv	<lv	<lv	<lv	<lv	-	-
PL	strefa łódzka	PL.10.00.b.23	noag	17708	1633365	-	-	-	-	-	-	-	-	-	-	-	-	>tv	>tv
PL	aglomeracja łódzka	PL.10.01.a.03	ag	512	932833	<lv	<lv	-	-	<lv	<lv	-	>lv	<lv	<lv	<lv	<lv	>tv	-
PL	miasto Piotrków Trybunalski	PL.10.02.m.01	noag	67	78954	<lv	<lv	-	-	<lv	<lv	-	>lv	<lv	<lv	<lv	<lv	-	-
PL	miasto Skierniewice	PL.10.03.m.01	noag	33	48772	<lv	<lv	-	-	<lv	<lv	-	>lv	<lv	<lv	<lv	<lv	-	-
PL	strefa łączycko-zgierska	PL.10.04.z.05	noag	3669	306640	<lv	<lv	<lv	<lv	<lv	<lv	<lv	>lv	<lv	<lv	<lv	<lv	-	-
PL	strefa piotrkowsko-radomszczańska	PL.10.05.z.06	noag	6709	574281	<lv	<lv	<lv	<lv	<lv	<lv	<lv	>lv	>lv	<lv	<lv	<lv	-	-
PL	strefa sieradzko-wieluńska	PL.10.06.z.05	noag	3982	359950	<lv	<lv	<lv	<lv	<lv	<lv	<lv	>lv	<lv	<lv	<lv	<lv	-	-
PL	strefa skierniewicko-łowicka	PL.10.07.z.05	noag	3248	264768	<lv	<lv	<lv	<lv	<lv	<lv	<lv	>lv	<lv	<lv	<lv	<lv	-	-
PL	strefa małopolska	PL.12.00.b.21	noag	14856	2514939	-	-	-	-	-	-	-	-	-	-	-	-	lto-tv	lto-tv
PL	aglomeracja krakowska	PL.12.01.a.01	ag	327	756267	<lv	<lv	-	-	<lv	>mot	-	>lv	>lv	<lv	<lv	<lv	<lto	-
PL	miasto Nowy Sącz	PL.12.02.m.01	noag	58	84487	<lv	<lv	-	-	<lv	<lv	-	>lv	>lv	<lv	<lv	<lv	-	-
PL	miasto Tarnów	PL.12.03.m.01	noag	72	116967	<lv	<lv	-	-	<lv	<lv	-	>lv	>lv	<lv	<lv	<lv	-	-
PL	strefa bocheńsko-brzeska	PL.12.04.z.02	noag	1240	190994	<lv	<lv	<lv	<lv	<lv	<lv	<lv	>lv	>lv	<lv	<lv	<lv	-	-
PL	strefa chrzanowsko-olkuska	PL.12.05.z.03	noag	1396	395470	<lv	>lv	<lv	<lv	<lv	>mot	<lv	>lv	>lv	<lv	<lv	<lv	-	-
PL	strefa dąbrowsko-tarnowska	PL.12.06.z.02	noag	1941	252386	<lv	<lv	<lv	<lv	<lv	<lv	<lv	<lv	<lv	<lv	<lv	<lv	-	-
PL	strefa gorlicko-limanowska	PL.12.07.z.03	noag	3467	427434	<lv	<lv	<lv	<lv	<lv	<lv	<lv	<lv	<lv	<lv	<lv	<lv	-	-
PL	strefa krakowsko-wielicka	PL.12.08.z.02	noag	1642	351887	<lv	<lv	<lv	<lv	<lv	<lv	<lv	>lv	>lv	<lv	<lv	<lv	-	-
PL	strefa miechowsko-proszowicka	PL.12.09.z.02	noag	1091	94233	<lv	<lv	<lv	<lv	<lv	<lv	<lv	>lv	>lv	<lv	<lv	<lv	-	-
PL	strefa myślenicko-suska	PL.12.10.z.03	noag	2003	353720	<lv	<lv	<lv	<lv	<lv	<lv	<lv	>lv	>lv	<lv	lv-mot	<lv	-	-

CC	zone name	zone code	type	area	pop	SO2-1h	SO2-d	SO2-yr	SO2-W	NO2-h	NO2-y	NOx-y	PM10-d	PM10-y	Lead	Benz	CO	O3-H	O3-V
PL	strefa nowotarsko-tatrzańska	PL.12.11.z.02	noag	1946	247361	<lv	<lv	<lv	<lv	<lv	<lv	<lv	>lv	>lv	<lv	<lv	<lv	-	-
PL	strefa mazowiecka	PL.14.00.b.41	noag	35040	3471053	-	-	-	-	-	-	-	-	-	-	-	-	>tv	lto-tv
PL	aglomeracja warszawska	PL.14.01.a.01	ag	517	1692955	<lv	<lv	-	-	<lv	>mot	-	>lv	>lv	<lv	<lv	<lv	lto-tv	-
PL	miasto Ostrołęka	PL.14.02.m.01	noag	28	53579	<lv	<lv	-	-	<lv	<lv	-	<lv	<lv	<lv	<lv	<lv	-	-
PL	miasto Plock	PL.14.03.m.01	noag	88	126264	<lv	<lv	-	-	<lv	<lv	-	>lv	<lv	<lv	<lv	<lv	-	-
PL	miasto Radom	PL.14.04.m.01	noag	112	226895	<lv	<lv	-	-	<lv	<lv	-	>lv	<lv	<lv	<lv	<lv	-	-
PL	miasto Siedlce	PL.14.05.m.01	noag	32	76074	<lv	<lv	-	-	<lv	<lv	-	<lv	<lv	<lv	<lv	<lv	-	-
PL	powiat legionowski	PL.14.06.p.01	noag	389	96712	<lv	<lv	<lv	<lv	<lv	<lv	<lv	<lv	<lv	<lv	<lv	<lv	-	-
PL	powiat nowodworski	PL.14.07.p.01	noag	695	75691	<lv	<lv	<lv	<lv	<lv	<lv	<lv	<lv	<lv	<lv	<lv	<lv	-	-
PL	powiat otwocki	PL.14.08.p.01	noag	617	115797	<lv	<lv	<lv	<lv	<lv	<lv	<lv	<lv	<lv	<lv	<lv	<lv	-	-
PL	powiat piaseczyński	PL.14.09.p.01	noag	621	145484	<lv	<lv	<lv	<lv	<lv	<lv	<lv	>lv	<lv	<lv	<lv	<lv	-	-
PL	powiat wołomiński	PL.14.10.p.01	noag	953	202999	<lv	<lv	<lv	<lv	<lv	<lv	<lv	<lv	<lv	<lv	<lv	<lv	-	-
PL	strefa ciechanowsko-mławska	PL.14.11.z.04	noag	3878	256629	<lv	<lv	<lv	<lv	<lv	<lv	<lv	>lv	<lv	<lv	<lv	<lv	-	-
PL	strefa kozienicko-grójecka	PL.14.12.z.04	noag	4108	299373	<lv	<lv	<lv	<lv	<lv	<lv	<lv	<lv	<lv	<lv	<lv	<lv	-	-
PL	strefa ostrołęcko-ostrowska	PL.14.13.z.05	noag	6474	332492	<lv	<lv	<lv	<lv	<lv	<lv	<lv	<lv	<lv	<lv	<lv	<lv	-	-
PL	strefa płocko-płońska	PL.14.14.z.04	noag	4642	296521	<lv	<lv	<lv	<lv	<lv	<lv	<lv	<lv	<lv	<lv	<lv	<lv	-	-
PL	strefa pruszkowsko-żyrardowska	PL.14.15.z.03	noag	1146	297857	<lv	<lv	<lv	<lv	<lv	<lv	<lv	>lv	<lv	<lv	<lv	<lv	-	-
PL	strefa radomsko-zwoleńska	PL.14.16.z.05	noag	4096	305531	<lv	<lv	<lv	<lv	<lv	<lv	<lv	<lv	<lv	<lv	<lv	<lv	-	-
PL	strefa siedlecko-mińska	PL.14.17.z.05	noag	5893	379477	<lv	<lv	<lv	<lv	<lv	<lv	<lv	<lv	<lv	<lv	<lv	<lv	-	-
PL	strefa warszawsko-sochaczewska	PL.14.18.z.02	noag	1268	183678	<lv	<lv	<lv	<lv	<lv	<lv	<lv	<lv	<lv	<lv	<lv	<lv	-	-
PL	województwo opolskie	PL.16.00.c.12	noag	9412	1041941	-	-	-	-	-	-	-	-	-	-	-	-	>tv	>tv
PL	powiat kędzierzyńsko-kozielski	PL.16.01.p.01	noag	625	101924	<lv	<lv	<lv	<lv	<lv	<lv	<lv	>lv	<lv	<lv	lv-mot	<lv	-	-
PL	strefa brzesko-nyska	PL.16.02.z.02	noag	2100	237773	<lv	<lv	<lv	<lv	<lv	<lv	<lv	<lv	<lv	<lv	<lv	<lv	-	-
PL	strefa głubczycko-prudnicka	PL.16.03.z.02	noag	1245	109910	<lv	<lv	<lv	<lv	<lv	<lv	<lv	<lv	<lv	<lv	<lv	<lv	-	-
PL	strefa krapkowicko-strzelecka	PL.16.04.z.02	noag	1186	148162	<lv	<lv	<lv	<lv	<lv	<lv	<lv	<lv	<lv	<lv	<lv	<lv	-	-
PL	strefa namysłowsko-oleska	PL.16.05.z.03	noag	2573	181831	<lv	<lv	<lv	<lv	<lv	<lv	<lv	>lv	<lv	<lv	<lv	<lv	-	-
PL	strefa opolska	PL.16.06.z.02	noag	1683	262341	<lv	<lv	<lv	<lv	<lv	<lv	<lv	<lv	<lv	<lv	<lv	<lv	-	-
PL	województwo podkarpackie	PL.18.00.c.25	noag	17846	2097564	-	-	-	-	-	-	-	-	-	-	-	-	lto-tv	lto-tv
PL	miasto Rzeszów	PL.18.01.m.01	noag	68	163508	<lv	<lv	-	-	<lv	<lv	-	>lv	<lv	<lv	<lv	<lv	-	-
PL	miasto Przemyśl	PL.18.02.m.01	noag	44	67127	<lv	<lv	-	-	<lv	<lv	-	>lv	<lv	<lv	<lv	<lv	-	-
PL	powiat jasielski	PL.18.03.p.01	noag	831	114997	<lv	<lv	<lv	<lv	<lv	<lv	<lv	>lv	<lv	<lv	<lv	<lv	-	-
PL	strefa jarosławsko-lubaczowska	PL.18.04.z.03	noag	3034	257731	<lv	<lv	<lv	<lv	<lv	<lv	<lv	<lv	<lv	<lv	<lv	<lv	-	-
PL	strefa krośnieńsko-sanocka	PL.18.05.z.03	noag	2193	252191	<lv	<lv	<lv	<lv	<lv	<lv	<lv	<lv	<lv	<lv	<lv	<lv	-	-

CC	zone name	zone code	type	area	pop	SO2-1h	SO2-d	SO2-yr	SO2-W	NO2-h	NO2-y	NOx-y	PM10-d	PM10-y	Lead	Benz	CO	O3-H	O3-V
PL	strefa mielecko-dębicka	PL.18.06.z.03	noag	2205	336923	<lv	<lv	<lv	<lv	<lv	<lv	<lv	<lv	<lv	<lv	<lv	<lv	-	-
PL	strefa przemysko-bieszczadzka	PL.18.07.z.03	noag	3188	119863	<lv	<lv	<lv	<lv	<lv	<lv	<lv	<lv	<lv	<lv	<lv	<lv	-	-
PL	strefa rzeszowsko-łańcucka	PL.18.08.z.05	noag	3475	436347	<lv	<lv	<lv	<lv	<lv	<lv	<lv	<lv	<lv	<lv	<lv	<lv	-	-
PL	strefa tarnobrzeczko-leżajska	PL.18.09.z.05	noag	2808	348877	<lv	<lv	<lv	<lv	<lv	<lv	<lv	<lv	<lv	<lv	<lv	<lv	-	-
PL	strefa podlaska	PL.20.00.b.16	noag	20085	907173	-	-	-	-	-	-	-	-	-	-	-	-	lto-tv	lto-tv
PL	aglomeracja białostocka	PL.20.01.a.01	ag	102	291882	<lv	<lv	-	-	<lv	<lv	-	<lv	<lv	<lv	<lv	<lv	lto-tv	-
PL	miasto Łomża	PL.20.02.m.01	noag	33	62909	<lv	<lv	-	-	<lv	<lv	-	<lv	<lv	<lv	<lv	<lv	-	-
PL	miasto Suwałki	PL.20.03.m.01	noag	66	69343	<lv	<lv	-	-	<lv	<lv	-	<lv	<lv	<lv	<lv	<lv	-	-
PL	powiat białostocki	PL.20.04.p.01	noag	2975	136972	<lv	<lv	<lv	<lv	<lv	<lv	<lv	<lv	<lv	<lv	<lv	<lv	-	-
PL	powiat grajewski	PL.20.05.p.01	noag	968	50635	<lv	<lv	<lv	<lv	<lv	<lv	<lv	<lv	<lv	<lv	<lv	<lv	-	-
PL	strefa bielsko-siemiatycka	PL.20.06.z.03	noag	4468	157426	<lv	<lv	<lv	<lv	<lv	<lv	<lv	<lv	<lv	<lv	<lv	<lv	-	-
PL	strefa łomżyńsko-kolneńska	PL.20.07.z.02	noag	2295	91683	<lv	<lv	<lv	<lv	<lv	<lv	<lv	<lv	<lv	<lv	<lv	<lv	-	-
PL	strefa moniecko-sokólska	PL.20.08.z.02	noag	3437	116320	<lv	<lv	<lv	<lv	<lv	<lv	<lv	<lv	<lv	<lv	<lv	<lv	-	-
PL	strefa suwalsko-augustowska	PL.20.09.z.03	noag	3821	116741	<lv	<lv	<lv	<lv	<lv	<lv	<lv	<lv	<lv	<lv	<lv	<lv	-	-
PL	strefa zambrowsko-wysokomazowiecka	PL.20.10.z.02	noag	2022	105144	<lv	<lv	<lv	<lv	<lv	<lv	<lv	<lv	<lv	<lv	<lv	<lv	-	-
PL	strefa pomorska	PL.22.00.b.17	noag	17896	1458143	-	-	-	-	-	-	-	-	-	-	-	-	lto-tv	lto-tv
PL	aglomeracja trójmiejska	PL.22.01.a.03	ag	418	741836	<lv	<lv	-	-	<lv	lv-mot	-	>lv	>lv	<lv	<lv	<lv	lto-tv	-
PL	miasto Słupsk	PL.22.02.m.01	noag	43	97857	<lv	<lv	-	-	<lv	<lv	-	<lv	<lv	<lv	<lv	<lv	-	-
PL	strefa bytowski-chojnicka	PL.22.03.z.03	noag	5131	226219	<lv	<lv	<lv	<lv	<lv	<lv	<lv	<lv	<lv	<lv	<lv	<lv	-	-
PL	strefa kartusko-kościerska	PL.22.04.z.03	noag	3081	263094	<lv	<lv	<lv	<lv	<lv	<lv	<lv	>lv	<lv	<lv	<lv	<lv	-	-
PL	strefa kwidzińsko-tczewska	PL.22.05.z.03	noag	2877	316270	<lv	<lv	<lv	<lv	<lv	lv-mot	<lv	>lv	<lv	<lv	<lv	<lv	-	-
PL	strefa łęborsko-słupska	PL.22.06.z.02	noag	3010	156882	<lv	<lv	<lv	<lv	<lv	<lv	<lv	<lv	<lv	<lv	<lv	<lv	-	-
PL	strefa malborsko-sztumska	PL.22.07.z.03	noag	1897	141147	<lv	<lv	<lv	<lv	<lv	<lv	<lv	<lv	<lv	<lv	<lv	<lv	-	-
PL	strefa pucko-wejherowska	PL.22.08.z.02	noag	1857	256674	<lv	<lv	<lv	<lv	<lv	<lv	<lv	<lv	<lv	<lv	<lv	<lv	-	-
PL	strefa śląska	PL.24.00.b.19	noag	10818	2379867	-	-	-	-	-	-	-	-	-	-	-	-	>tv	>tv
PL	aglomeracja górnośląska	PL.24.01.a.14	ag	1218	1990750	<lv	<lv	-	-	<lv	<lv	-	>lv	>lv	<lv	<lv	<lv	>tv	-
PL	aglomeracja rybnicko-jastrzębska	PL.24.02.a.03	ag	298	298520	<lv	<lv	-	-	<lv	<lv	-	>lv	>lv	<lv	<lv	<lv	>tv	-
PL	miasto Bielsko-Biała	PL.24.03.m.01	noag	125	176453	<lv	<lv	-	-	<lv	<lv	-	>lv	<lv	<lv	<lv	<lv	-	-
PL	miasto Częstochowa	PL.24.04.m.01	noag	160	245030	<lv	<lv	-	-	<lv	<lv	-	>lv	<lv	<lv	<lv	<lv	-	-
PL	strefa bielsko-żywiecka	PL.24.05.z.03	noag	2229	472106	<lv	<lv	<lv	<lv	<lv	<lv	<lv	>lv	<lv	<lv	<lv	<lv	-	-
PL	strefa bieruńsko-pszczyńska	PL.24.06.z.02	noag	629	160845	<lv	<lv	<lv	<lv	<lv	<lv	<lv	<lv	<lv	<lv	<lv	<lv	-	-
PL	strefa częstochowsko-lubliniecka	PL.24.07.z.04	noag	3712	366501	<lv	<lv	<lv	<lv	<lv	<lv	<lv	<lv	<lv	<lv	<lv	<lv	-	-
PL	strefa gliwicko-mikolowska	PL.24.08.z.02	noag	897	205960	<lv	<lv	<lv	<lv	<lv	<lv	<lv	<lv	<lv	<lv	<lv	<lv	-	-

CC	zone name	zone code	type	area	pop	SO2-1h	SO2-d	SO2-yr	SO2-W	NO2-h	NO2-y	NOx-y	PM10-d	PM10-y	Lead	Benz	CO	O3-H	O3-V
PL	strefa raciborsko-wodzisławska	PL.24.09.z.03	noag	1055	340078	<lv	<lv	<lv	<lv	<lv	<lv	<lv	>lv	>lv	<lv	<lv	<lv	-	-
PL	strefa tamogórsko-będzińska	PL.24.10.z.03	noag	2011	412894	<lv	<lv	<lv	<lv	<lv	<lv	<lv	>lv	>lv	<lv	<lv	<lv	-	-
PL	województwo świętokrzyskie	PL.26.00.c.14	noag	11710	1287445	-	-	-	-	-	-	-	-	-	-	-	-	lto-tv	lto-tv
PL	miasto Kielce	PL.26.01.m.01	noag	110	206381	<lv	<lv	-	-	<lv	<lv	-	>lv	<lv	<lv	<lv	<lv	-	-
PL	powiat kielecki	PL.26.02.p.01	noag	2245	199786	<lv	<lv	<lv	<lv	<lv	<lv	<lv	<lv	<lv	<lv	<lv	<lv	-	-
PL	strefa ostrowiecko-starachowicka	PL.26.03.z.05	noag	3586	433842	<lv	<lv	<lv	<lv	<lv	<lv	<lv	<lv	<lv	<lv	<lv	<lv	-	-
PL	strefa sandomiersko-pińczowska	PL.26.04.z.07	noag	5769	447436	<lv	<lv	<lv	<lv	<lv	<lv	<lv	<lv	<lv	<lv	<lv	<lv	-	-
PL	województwo warmińsko-mazurskie	PL.28.00.c.21	noag	24173	1429944	-	-	-	-	-	-	-	-	-	-	-	-	lto-tv	lto-tv
PL	miasto Elbląg	PL.28.01.m.01	noag	80	127036	<lv	<lv	-	-	<lv	<lv	-	<lv	<lv	<lv	<lv	<lv	-	-
PL	miasto Olsztyn	PL.28.02.m.01	noag	88	168780	<lv	<lv	-	-	<lv	<lv	-	<lv	<lv	<lv	<lv	<lv	-	-
PL	powiat elbląski	PL.28.03.p.01	noag	1416	57098	<lv	<lv	<lv	<lv	<lv	<lv	<lv	<lv	<lv	<lv	<lv	<lv	-	-
PL	powiat olsztyński	PL.28.04.p.01	noag	2837	114015	<lv	<lv	<lv	<lv	<lv	<lv	<lv	<lv	<lv	<lv	<lv	<lv	-	-
PL	strefa bartoszycko-lidzbarska	PL.28.05.z.04	noag	4647	215982	<lv	<lv	<lv	<lv	<lv	<lv	<lv	<lv	<lv	<lv	<lv	<lv	-	-
PL	strefa elcko-węgorzewska	PL.28.06.z.05	noag	4572	228008	<lv	<lv	<lv	<lv	<lv	<lv	<lv	<lv	<lv	<lv	<lv	<lv	-	-
PL	strefa ilawsko-ostródzka	PL.28.07.z.02	noag	3151	196531	<lv	<lv	<lv	<lv	<lv	<lv	<lv	<lv	<lv	<lv	<lv	<lv	-	-
PL	strefa mrągowsko-szczycieńska	PL.28.08.z.03	noag	4773	178322	<lv	<lv	<lv	<lv	<lv	<lv	<lv	<lv	<lv	<lv	<lv	<lv	-	-
PL	strefa nidzicko-działdowska	PL.28.09.z.03	noag	2609	144172	<lv	<lv	<lv	<lv	<lv	<lv	<lv	<lv	<lv	<lv	<lv	<lv	-	-
PL	strefa wielkopolska	PL.30.00.b.34	noag	29565	2820478	-	-	-	-	-	-	-	-	-	-	-	-	>tv	>tv
PL	aglomeracja poznańska	PL.30.01.a.01	ag	262	553560	<lv	<lv	-	-	<lv	<lv	-	>lv	<lv	<lv	<lv	<lv	lto-tv	-
PL	miasto Kalisz	PL.30.02.m.01	noag	69	107991	<lv	<lv	-	-	<lv	<lv	-	>lv	<lv	<lv	<lv	<lv	-	-
PL	miasto Konin	PL.30.03.m.01	noag	82	80682	<lv	<lv	-	-	<lv	<lv	-	<lv	<lv	<lv	<lv	<lv	-	-
PL	miasto Leszno	PL.30.04.m.01	noag	32	63611	<lv	<lv	-	-	<lv	<lv	-	<lv	<lv	<lv	<lv	<lv	-	-
PL	strefa chodziesko-wagrowiecka	PL.30.05.z.03	noag	3531	201859	<lv	<lv	<lv	<lv	<lv	<lv	<lv	<lv	<lv	<lv	<lv	<lv	-	-
PL	strefa gnieźnieńsko-wrzesińska	PL.30.06.z.03	noag	2797	274159	<lv	<lv	<lv	<lv	<lv	<lv	<lv	>lv	<lv	<lv	<lv	<lv	-	-
PL	strefa gostyńsko-leszczyńska	PL.30.07.z.03	noag	2170	186235	<lv	<lv	<lv	<lv	<lv	<lv	<lv	<lv	<lv	<lv	<lv	<lv	-	-
PL	strefa kalisko-jarocińska	PL.30.08.z.04	noag	3174	291477	<lv	<lv	<lv	<lv	<lv	<lv	<lv	<lv	<lv	<lv	<lv	<lv	-	-
PL	strefa konińsko-kolska	PL.30.09.z.03	noag	3518	298156	<lv	<lv	<lv	<lv	<lv	<lv	<lv	<lv	<lv	<lv	<lv	<lv	-	-
PL	strefa kościański-śremska	PL.30.10.z.03	noag	1920	191388	<lv	<lv	<lv	<lv	<lv	<lv	<lv	<lv	<lv	<lv	<lv	<lv	-	-
PL	strefa nowotomysko-wolsztyńska	PL.30.11.z.04	noag	3072	213030	<lv	<lv	<lv	<lv	<lv	<lv	<lv	<lv	<lv	<lv	<lv	<lv	-	-
PL	strefa ostrowsko-kępińska	PL.30.12.z.03	noag	2541	269628	<lv	<lv	<lv	<lv	<lv	<lv	<lv	>lv	<lv	<lv	<lv	<lv	-	-

CC	zone name	zone code	type	area	pop	SO2-1h	SO2-d	SO2-yr	SO2-W	NO2-h	NO2-y	NOx-y	PM10-d	PM10-y	Lead	Benz	CO	O3-H	O3-V
PL	strefa pilsko-zlotowska	PL.30.13.z.02	noag	2928	206895	<lv	<lv	<lv	<lv	<lv	<lv	<lv	>lv	<lv	<lv	<lv	<lv	-	-
PL	strefa poznańsko-szamotulska	PL.30.14.z.03	noag	3731	435367	<lv	<lv	<lv	<lv	<lv	<lv	<lv	<lv	<lv	<lv	<lv	<lv	-	-
PL	strefa zachodniopomorska	PL.32.00.b.20	noag	22591	1283770	-	-	-	-	-	-	-	-	-	-	-	-	lto-tv	lto-tv
PL	aglomeracja szczecińska	PL.32.01.a.01	ag	301	409068	<lv	<lv	-	-	<lv	<lv	-	<lv	<lv	<lv	<lv	<lv	lto-tv	-
PL	miasto Koszalin	PL.32.02.m.01	noag	83	107693	<lv	<lv	-	-	<lv	<lv	-	<lv	<lv	<lv	<lv	<lv	-	-
PL	miasto Świnoujście	PL.32.03.m.01	noag	197	40819	<lv	<lv	-	-	<lv	<lv	-	<lv	<lv	<lv	<lv	<lv	-	-
PL	powiat choszczeński	PL.32.04.p.01	noag	1328	50020	<lv	<lv	<lv	<lv	<lv	<lv	<lv	<lv	<lv	<lv	<lv	<lv	-	-
PL	powiat goleniowski	PL.32.05.p.01	noag	1616	78918	<lv	<lv	<lv	<lv	<lv	<lv	<lv	<lv	<lv	<lv	<lv	<lv	-	-
PL	powiat gryfiński	PL.32.06.p.01	noag	1870	83037	<lv	<lv	<lv	<lv	<lv	<lv	<lv	<lv	<lv	<lv	<lv	<lv	-	-
PL	powiat kołobrzeski	PL.32.07.p.01	noag	725	76217	<lv	<lv	<lv	<lv	<lv	<lv	<lv	<lv	<lv	<lv	<lv	<lv	-	-
PL	powiat łobeski	PL.32.08.p.01	noag	1065	38233	<lv	<lv	<lv	<lv	<lv	<lv	<lv	<lv	<lv	<lv	<lv	<lv	-	-
PL	powiat myśliborski	PL.32.09.p.01	noag	1182	67340	<lv	<lv	<lv	<lv	<lv	<lv	<lv	<lv	<lv	<lv	<lv	<lv	-	-
PL	powiat policki	PL.32.10.p.01	noag	665	64785	<lv	<lv	<lv	<lv	<lv	<lv	<lv	<lv	<lv	<lv	<lv	<lv	-	-
PL	powiat pyrzycki	PL.32.11.p.01	noag	726	39958	<lv	<lv	<lv	<lv	<lv	<lv	<lv	<lv	<lv	<lv	<lv	<lv	-	-
PL	powiat stargardzki	PL.32.12.p.01	noag	1520	119393	<lv	<lv	<lv	<lv	<lv	<lv	<lv	<lv	<lv	<lv	<lv	<lv	-	-
PL	powiat szczecinecki	PL.32.13.p.01	noag	1765	77276	<lv	<lv	<lv	<lv	<lv	<lv	<lv	<lv	<lv	<lv	<lv	<lv	-	-
PL	strefa białogardzko-świdwińska	PL.32.14.z.02	noag	1939	97135	<lv	<lv	<lv	<lv	<lv	<lv	<lv	<lv	<lv	<lv	<lv	<lv	-	-
PL	strefa drawsko-walecka	PL.32.15.z.02	noag	3179	112738	<lv	<lv	<lv	<lv	<lv	<lv	<lv	<lv	<lv	<lv	<lv	<lv	-	-
PL	strefa gryficko-kamieńska	PL.32.16.z.02	noag	2020	108433	<lv	<lv	<lv	<lv	<lv	<lv	<lv	<lv	<lv	<lv	<lv	<lv	-	-
PL	strefa koszalińsko-sławieńska	PL.32.17.z.02	noag	2711	121775	<lv	<lv	<lv	<lv	<lv	<lv	<lv	<lv	<lv	<lv	<lv	<lv	-	-
PT	Braga	PT1001	ag	84	114259	<lv	<lv	-	-	<lv	<lv	-	>lv	>lv	-	-	-	lto-tv	
PT	Vale do Ave	PT1002	ag	399	322444	<lv	<lv	-	-	<lv	<lv	-	>lv	<lv	-	-	-	>tv	
PT	Vale do Sousa	PT1003	ag	192	127981	<lv	<lv	-	-	<lv	<lv	-	>lv	<lv	-	-	-	>tv	
PT	Porto Litoral	PT1004	ag	714	1253224	<lv	<lv	-	-	<lv	>mot	-	>lv	>lv	-	-	-	lto-tv	
PT	Norte Litoral	PT1005	nonag	5030	1011201	<lv	<lv	-	-	<lv	<lv	-	<lv	<lv	-	-	-	>tv	
PT	Norte Interior	PT1006	nonag	14830	643606	<lv	<lv	<lv	<lv	<lv	<lv	<lv	<lv	<lv	-	-	-	>tv	>tv
PT	Aveiro/Ílhavo	PT2001	ag	120	72169	<lv	<lv	-	-	<lv	<lv	-	>lv	<lv	-	-	-	>tv	
PT	Coimbra	PT2002	ag	63	86751	<lv	<lv	-	-	<lv	<lv	-	<lv	<lv	-	-	-	lto-tv	
PT	Zona de Influência de Estarreja	PT2003	nonag	631	135485	<lv	<lv	-	-	<lv	<lv	-	>lv	<lv	-	-	-	>tv	
PT	Centro Litoral	PT2004	nonag	5424	660132	<lv	<lv	<lv	<lv	<lv	<lv	<lv	<lv	<lv	-	-	-	>tv	lto-tv
PT	Centro Interior	PT2005	nonag	17395	767113	<lv	<lv	<lv	<lv	<lv	<lv	<lv	<lv	<lv	-	-	-	>tv	lto-tv
PT	Área Metropolitana de Lisboa Norte	PT3001	ag	482	1740288	<lv	<lv	-	-	lv-mot	>mot	-	>lv	>lv	-	-	-	lto-tv	
PT	Área Metropolitana de Lisboa Sul	PT3002	ag	217	422436	>lv	>lv	-	-	<lv	<lv	-	>lv	<lv	-	-	-	lto-tv	

CC	zone name	zone code	type	area	pop	SO2-1h	SO2-d	SO2-yr	SO2-W	NO2-h	NO2-y	NOx-y	PM10-d	PM10-y	Lead	Benz	CO	O3-H	O3-V
PT	Setúbal	PT3003	ag	51	85289	<lv	<lv	-	-	<lv	<lv	-	<lv	<lv	-	-	-	lto-tv	
PT	Vale do Tejo e Oeste	PT3004	nonag	9645	910014					<lv	<lv	<lv	<lv	<lv	-	-	-	>tv	lto-tv
PT	Alentejo Litoral	PT4001	nonag	3799	84007	<lv	<lv	<lv	<lv	<lv	<lv	<lv	<lv	<lv	-	-	-	lto-tv	
PT	Alentejo Interior	PT4002	nonag	21903	450843	<lv	<lv	-	-	<lv	<lv	-	<lv	<lv	-	-	-	lto-tv	
PT	Portimão/Lagoa	PT5001	nonag	152	165350	<lv	<lv	-	-	<lv	<lv	-	<lv	<lv	-	-	-	lto-tv	
PT	Albufeira/Loulé	PT5002	nonag	135	196444	<lv	<lv	-	-	<lv	<lv	-	<lv	<lv	-	-	-	lto-tv	
PT	Faro/Olhão	PT5003	nonag	152	99483	<lv	<lv	-	-	<lv	<lv	-	<lv	<lv	-	-	-	lto-tv	>tv
PT	Algarve	PT5004	nonag	4502	186249	<lv	<lv	<lv	<lv	<lv	<lv	<lv	<lv	<lv	-	-	-	>tv	lto-tv
PT	Funchal	PT6001	ag	102	149527	<lv	<lv	-	-	<lv	>mot	-	<lv	<lv	-	-	-		
PT	Madeira/ Porto Santo	PT6002	nonag	641	86188	<lv	<lv			<lv	<lv		<lv	<lv	-	-	-	-	-
PT	RAM	PT6003	nonag	743	235715	-	-	-	-	-	-	-	-	-	-	-	-	<lto	
PT	Açores	PT7001	nonag	2329	237795	<lv	<lv			<lv	<lv		<lv	<lv	-	-	-	<lto	
PT	Península de Setúbal/ Álcacer do Sal	PT8001	nonag	2698	147280	<lv	<lv	-	-	<lv	<lv	-	<lv	<lv	-	-	-	lto-tv	
PT	Portugal	PT9000	nonag	88639	9833408	-	-	-	-	-	-	-	-	-	<lv	<lv	<lv	-	-
RO	Iasi	RO0101	ag	437	389427	<lv	<lv	-	-	<lv	<lv	-	>lv	>lv	<lv	<lv	<lv	>tv	-
RO	Nord_Est	RO0199	nonag	36842	3345119			-	-			-						-	-
RO	Braila	RO0201	ag	426	251519			-	-			-						-	-
RO	Constanta	RO0202	ag	318	443378			-	-			-						-	-
RO	Galati	RO0203	ag	440	329062			-	-			-						-	-
RO	Sud_Est	RO0299	nonag	34576	1822420			-	-			-						-	-
RO	Pitesti	RO0301	ag	625	246013			-	-			-						-	-
RO	Ploiesti	RO0302	ag	299	299800			-	-			-						-	-
RO	Sud	RO0399	nonag	33198	2796229			-	-			-						-	-
RO	Craiova	RO0401	ag	112	313021	<lv	<lv	-	-	<lv	<lv	-	>lv	>lv	<lv	<lv	<lv	>tv	-
RO	Sud_Vest	RO0499	nonag	29214	1993429			-	-			-						-	-
RO	Timisoara	RO0501	ag	649	366241			-	-			-						-	-
RO	Vest	RO0599	nonag	31385	1564217			-	-			-						-	-
RO	Cluj	RO0601	ag	612	362182	<lv	<lv	-	-	<lv	lv-mot	-	>lv	>lv	<lv	<lv	<lv	>tv	-
RO	Baia Mare	RO0602	ag	595	185141			-	-			-						-	-
RO	Nord_Vest	RO0699	nonag	33566	2190077			-	-			-						-	-
RO	Brasov	RO0701	ag	327	356972			-	-			-						-	-
RO	copsa mica-medias	RO0798	nonag	387	69816			-	-			-						-	-
RO	Centru	RO0799	nonag	33371	2173514			-	-			-						-	-
RO	Bucuresti	RO0801	ag	679	2206574	<lv	<lv	<lv	<lv	>mot	>mot	<lv	>lv	>lv	<lv	-	>lv	>tv	>tv
RO	Ilfov	RO0899	nonag	1470	144380			-	-			-						-	-
SE	Zone North	SW1	nonag	29264	1431829	<lv	<lv	<lv	<lv	<lv	lv-	<lv	<lv	<lv	<lv	<lv	<lv	lto-tv	<lto

CC	zone name	zone code	type	area	pop	SO2-1h	SO2-d	SO2-yr	SO2-W	NO2-h	NO2-y	NOx-y	PM10-d	PM10-y	Lead	Benz	CO	O3-H	O3-V		
				5							mot										
SE	Zone Middle	SW2	nonag	70076	2086944	<lv	<lv	<lv	<lv	<lv	<lv	<lv	>lv	<lv	<lv	<lv	<lv	<lv	<lv	lto-tv	<lto
SE	Zone South	SW3	nonag	82198	2767866	<lv	<lv	<lv	<lv	<lv	<lv	<lv	<lv	<lv	<lv	<lv	<lv	<lv	<lv	lto-tv	lto-tv
SE	Stockholm	SW4	ag	2379	1629158	<lv	<lv	<lv	<lv	<lv	>mot	<lv	>lv	>lv	<lv	<lv	<lv	<lv	<lv	<lto	<lto
SE	Göteborg	SW5	ag	2013	729724	<lv	<lv	<lv	<lv	<lv	>mot	<lv	<lv	<lv	<lv	<lv	<lv	<lv	<lv	<lto	<lto
SE	Malmö	SW6	ag	927	467736	<lv	<lv	<lv	<lv	<lv	<lv	<lv	<lv	<lv	<lv	<lv	<lv	<lv	<lv	<lto	<lto
SI	Panonsko	SI1	nonag	3360	316728	<lv	<lv	<lv	<lv	<lv	<lv	<lv	>lv	<lv	<lv	<lv	<lv	<lv	<lv	>tv	>tv
SI	Alpsko in Panonsko	SI2	nonag	4574	440871	<lv	<lv	<lv	<lv	<lv	<lv	<lv	>lv	>lv	>lv	<lv	<lv	<lv	<lv	>tv	>tv
SI	Velenjska kotlina	SI2a	nonag	197	45200	<lv	<lv	<lv	<lv				-	-	-	-	-	-	-	-	-
SI	Zasavje	SI2b	nonag	264	45360	<lv	<lv	<lv	<lv				-	-	-	-	-	-	-	-	-
SI	Spodnjесavsko	SI2c	nonag	345	28060	<lv	<lv	<lv	<lv	-	-	-	-	-	-	-	-	-	-	-	-
SI	Alpsko - Dinarsko	SI3	nonag	7092	550496	<lv	<lv	<lv	<lv	<lv	<lv	<lv	<lv	<lv	<lv	<lv	<lv	<lv	<lv	>tv	>tv
SI	Sredozemsko	SI4	nonag	4825	270824	<lv	<lv	<lv	<lv	<lv	<lv	<lv	>lv	>lv	<lv	<lv	<lv	<lv	<lv	>tv	>tv
SI	Ljubljana	SIL	ag	275	270227	<lv	<lv	<lv	<lv	<lv	<lv	<lv	>lv	>lv	<lv	<lv	<lv	<lv	<lv	>tv	>tv
SI	Maribor	SIM	ag	147	114890	<lv	<lv	<lv	<lv	<lv	<lv	<lv	>lv	>lv	<lv	<lv	<lv	<lv	<lv	lto-tv	lto-tv
SK	BRATISLAVA	SKBA01.1	ag	368	426927	<lv	<lv		<lv	<lv			>lv	<lv	<lv	<lv	<lv	<lv	<lv	>tv	>tv
SK	Slovensko	SK-BA01.1	nonag	48667	4974071	-	-	-	-	-	-	-	-	-	-	-	-	-	-	>tv	>tv
SK	Bratislavský kraj	SKBA02	nonag	1685	183923	<lv	<lv		<lv	<lv			<lv	<lv	<lv	<lv	<lv	<lv	<lv	-	-
SK	Banskobystrický kraj	SKBB01	nonag	9455	654668	<lv	<lv		<lv	<lv			>lv	<lv	<lv	<lv	<lv	<lv	<lv	-	-
SK	KOŠICE	SKKO01.1	ag	245	234237	<lv	<lv		<lv	lv-mot			>lv	<lv	<lv	<lv	<lv	<lv	<lv	-	-
SK	Košický kraj	SKKO02	nonag	6508	539866	<lv	<lv		<lv	<lv			>lv	>lv	<lv	<lv	<lv	<lv	<lv	-	-
SK	Nitrianský kraj	SKNI01	nonag	6343	706758	<lv	<lv		<lv	<lv			<lv	<lv	<lv	<lv	<lv	<lv	<lv	-	-
SK	Prešovský kraj	SKPR01	nonag	8993	801939	<lv	<lv	<lv	<lv	<lv	<lv	<lv	<lv	<lv	<lv	<lv	<lv	<lv	<lv	-	-
SK	Trnavský kraj	SKTN01	nonag	4148	557151	<lv	<lv	<lv	<lv	<lv	<lv	<lv	<lv	<lv	<lv	<lv	<lv	<lv	<lv	-	-
SK	Trenčianský kraj	SKTR01	nonag	4502	599831	<lv	<lv		<lv	<lv			>lv	>lv	<lv	<lv	<lv	<lv	<lv	-	-
SK	Žilinský kraj	SKZI01	nonag	6788	695698	<lv	<lv		<lv	<lv			>lv	>lv	<lv	<lv	<lv	<lv	<lv	-	-

References

de Leeuw F.A.A.M. and Vixseboxse E. (2008) Reporting on ambient air quality assessment,; preliminary results for 2007. ETC/ACC Technical paper 2008/4. European Topic Centre on Air and Climate Change, Bilthoven, the Netherlands. Available at:
http://air-climate.eionet.europa.eu/reports/ETCACC_TP2008_4_AQQ2007_prelim_analysis